

[Show All Answers](#)
[Hide All Answers](#)

## Synthesis of combinational logic

★ indicates problems that have been selected for discussion in section, time permitting.

Problem 1. A certain function F has the following truth table:

A	B	C	F
0	0	0	1
0	0	1	0
0	1	0	0
0	1	1	1
1	0	0	1
1	0	1	1
1	1	0	0
1	1	1	1

- A. ★ Write a sum-of-products expression for F.

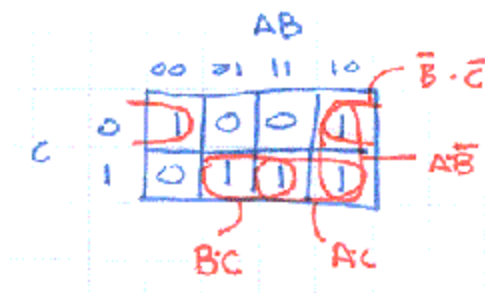
[Hide Answer](#)

$$F = \bar{A}\bar{B}\bar{C} + \bar{A}B\bar{C} + A\bar{B}\bar{C} + A\bar{B}C + A\bar{B}C$$

- B. ★ Write a minimal sum-of-products expression for F. Show a combinational circuit that implements F using only INV and NAND gates.

[Hide Answer](#)

First construct a Karnaugh map for F:

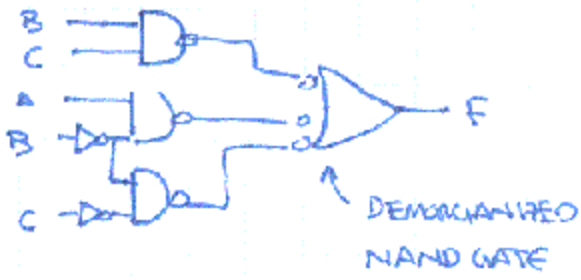


To cover all the 1's in the map we have to use 3 of the 4 patches:

$$F = \bar{B}\bar{C} + A\bar{B} + B\bar{C}$$

One possible schematic diagram is shown below. Note that the final 3-input NAND gate has been drawn in its Demorgitized form, i.e., an OR gate with inverting

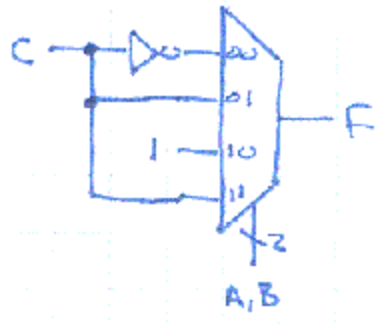
inputs.



C. ★ Implement F using one 4-input MUX and inverter.

**Hide Answer**

If we use A and B as the select inputs for the MUX then the four data inputs of the MUX should be tied to one of "0" (ground), "1" (Vdd), "C" or "not C". For this function the following is the correct schematic. Note that by changing the connections on the data inputs we could implement any function of A, B and C.



D. ★ Write a minimal sum-of-products expression for NOT(F).

**Hide Answer**

We can use the Karnaugh map above to answer this question too: just write equations for patches that cover the 0's:

$$F = B\bar{C} + \bar{A}\bar{B}C$$

Problem 2.

A. Give a minimal sum-of-products expression that is equivalent to the follow logic expressions:

(A)  $\overline{A + B}$

$$(B) \overline{A}B^*C + A^*B^*C + A^*B^*C + A^*B^*C + A^*B^*C + A^*B^*C$$

Hide Answer

(A)  $\overline{A}^*\overline{B}$

(B)  $B + C$

- B. Multiple choice: A Karnaugh map can't represent more than 2 variables along a single dimension because
1. Gray code counts can't go beyond 2 bits.
  2. Each value  $v$  along a dimension must be adjacent to all values that are Hamming distance 1 from  $v$ .
  3. Three is not a power of two.
  4. No reason. You can represent 3 variables along a dimension. You couldn't make 5-variable K-maps otherwise.

Hide Answer

2. The 2-bit gray code cycle 00-01-11-10-... handles two variables just fine, but can't be extended to 3 bits. There are 3-bit gray codes but they involve non-adjacent encodings that are Hamming distance 1 apart.

- C. ★ What is the maximum number of product terms in a minimal sum-of-products expressions with three variables?

Hide Answer

The most complicated K-map that doesn't permit any sort of simplification is a checkerboard of 1's where 50% of the K-map cells can be 1. So in a 3-input K-map, there are eight cells of which four can be 1 in a checkerboard pattern. Each 1 in the checkerboard corresponds to a separate product term since it can't be combined with its neighbors and herefore the maximal number of product terms is 4.

- D. ★ True or false: A boolean function of  $N$  variables with greater than  $2^{N-1}$  product terms can *always* be simplified to an expression using fewer product terms.

Hide Answer

True. If there are more than  $2^{N-1}$  product terms, the K-map of the function would be more than half full and there would be 1's in at least two adjacent cells, leading to a possible simplification.

- E. ★ Suppose the stock room is very low on components and has only *five* NAND gates on hand. Would we be able to build an implementation of any arbitrary 2-input boolean function?

Hide Answer

Yes. 3 of the NAND gates could be arranged in a tree, computing the sum-of-products of 2 product terms. (We know from the previous problem that any function

with 2 inputs can be simplified down to just 2 product terms.) The other two NAND gates could be used as inverters to produce negations of the inputs which may be needed for the product terms.

**Problem 3.** In the Karnaugh maps below the use of "X" in a cell indicates a "don't care" situation where the value of the function for those inputs can be chosen to minimize the size of the overall expression.

		AB			
		00	01	11	10
CD	00	0	1	1	1
	01	1	1	1	1
	11	1	1	1	1
	10	0	0	0	0

		A			
		0	0	0	1
C		1	1	0	0
		B			

(a)

		A			
		1	0	1	1
		1	0	0	0
C		0	0	X	0
		1	1	X	1
		B			

(b)

		A			
		1	0	1	1
C		1	0	0	0
		B			

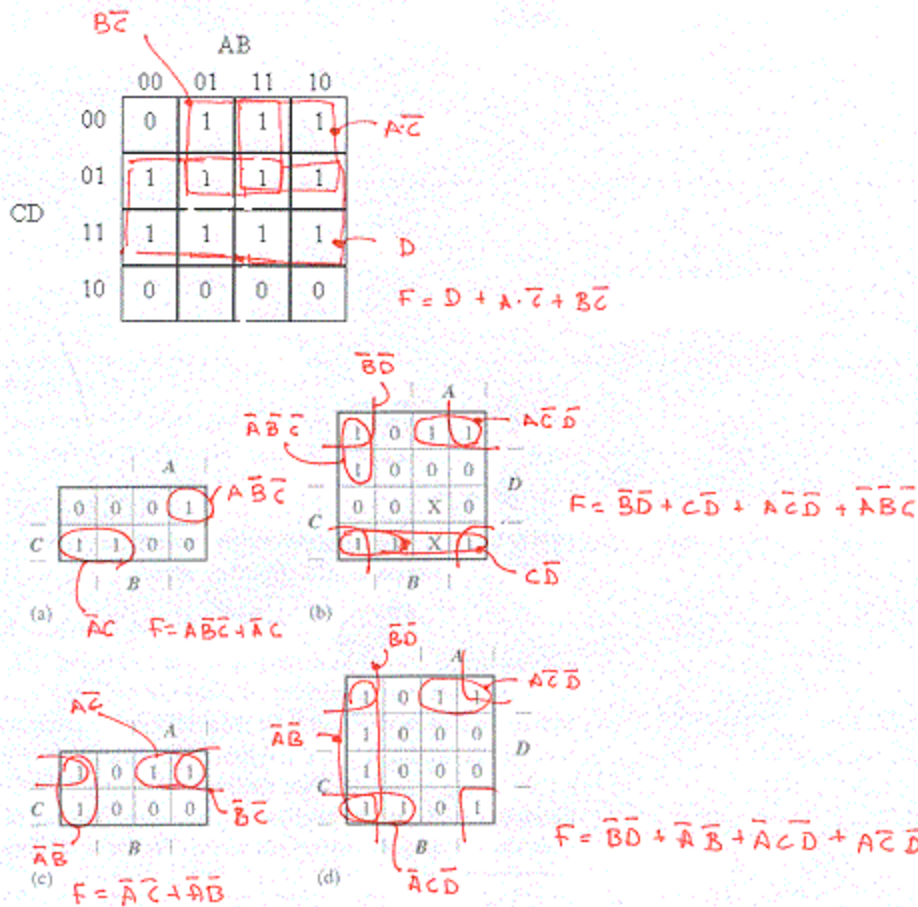
(c)

		A			
		1	0	1	1
		1	0	0	0
C		1	0	0	0
		1	1	0	1
		B			

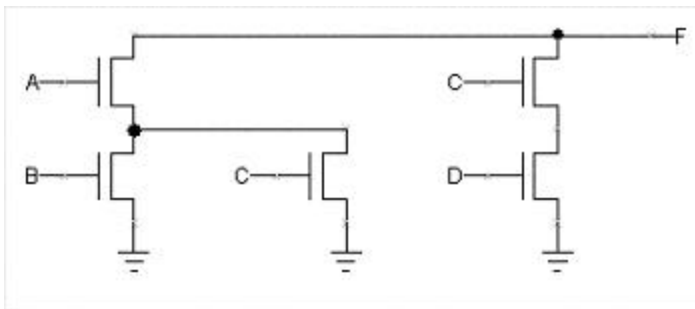
(d)

- A. Circle the prime implicants in the Karnaugh maps and write a minimal sum-of-products expression for each of the maps.

**Hide Answer**

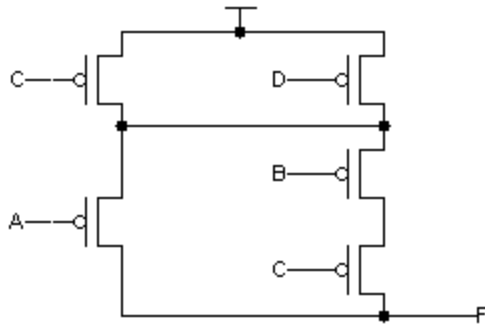


**Problem 4.** The following diagram shows the pulldown circuitry for a static CMOS logic gate that implements the function  $F(A,B,C,D)$ :



- A. Draw a circuit diagram for the pullup circuitry that would complete the static CMOS implementation of  $F(A,B,C,D)$ .

**Hide Answer**



B. Assuming the correct pullup circuitry is added to the diagram above, give a minimal sum-of-products expression for  $F(A,B,C,D)$ .

**Hide Answer**

$$F = (\bar{C} + \bar{D}) * (\bar{A} + \bar{B} * \bar{C}) = \bar{A} * \bar{C} + \bar{A} * \bar{D} + \bar{B} * \bar{C} + \bar{B} * \bar{C} * \bar{D} = \bar{A} * \bar{C} + \bar{A} * \bar{D} + \bar{B} * \bar{C}$$

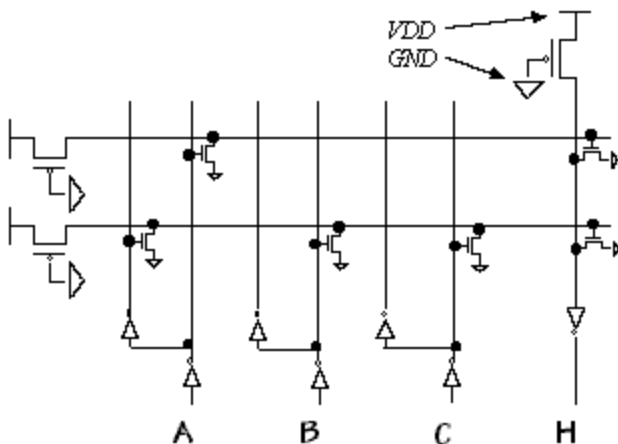
C. Which of the following changes will decrease the propagation time of the above circuit?

- (A) decreasing the power supply voltage
- (B) increasing the power supply voltage
- (C) increasing the operating temperature
- (D) redefining VOL to provide increased noise margins

**Hide Answer**

(B). From Lab #1 we know that gates run faster (ie, have decreased propagation times) when the power supply is increased or the operating temperature is lowered. Redefining VOL to provide increased noise margins would require giving a lower value, making the output have to make a longer transition before it reached VOL.

Problem 5. The following PLA implements  $H(A,B,C)$ :



- A. ★ Write a minimal sum-of-products expression for H.

**Hide Answer**

The two horizontal signals in the PLA are product terms:

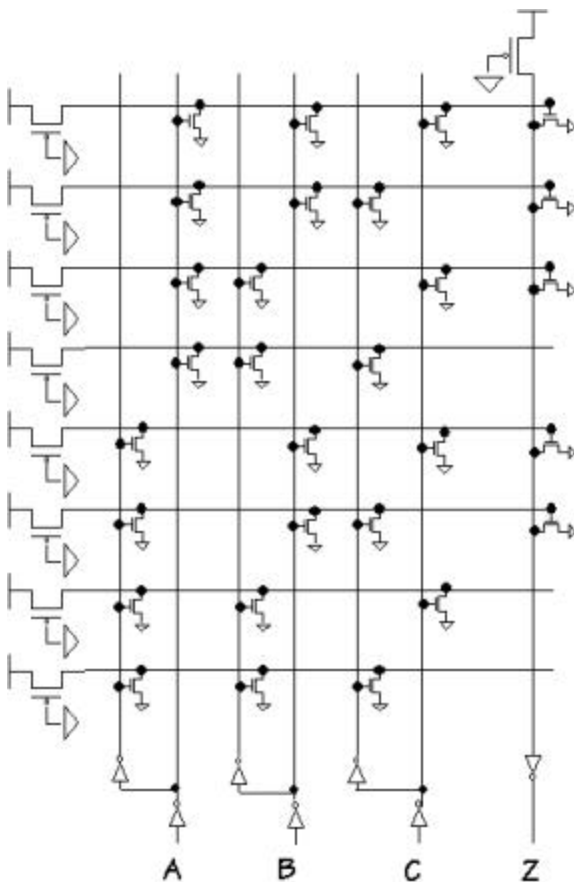
top term is pulled down when  $\bar{A} = 1 \Rightarrow$  product term is A

bottom term is pulled down when A or  $\bar{B}$  or  $\bar{C}$  is 1  $\Rightarrow$  product term is  $\bar{A}B^*C$

The rightmost column is just a distributed 2-input NOR gate that combines the product terms, and the final inverter converts this into a OR of the product terms.  
So:

$$H = A + \bar{A}B^*C = A + B^*C$$

Problem 6. The following diagram shows a ROM implementation of a 3-input Boolean function: Give the Boolean function represented at the output, Z.



- A. For a particular set of input values, how many of the horizontal term lines carry a logical one?

**Hide Answer**

Each horizontal term decodes one of the eight possible product terms formed from A, B and C. For example:

top term is pulled down when  $\bar{A}$  or  $\bar{B}$  or  $\bar{C} = 1 \Rightarrow$  product term is  $A*B*C$

next term is pulled down when  $\bar{A}$  or  $\bar{B}$  or C is 1  $\Rightarrow$  product term is  $A*B*\bar{C}$

...

So, for a particular set of input values only one of these products will be true.

- B. ★ Give the Boolean function represented at the output, Z.

**Hide Answer**

The rightmost column is a distributed NOR gate that combines product terms which are connected to one of the pulldowns of that NOR gate. The final inverter converts the NOR into an OR. So working from the top down the five product terms are:

$$Z = A*B*C + A*B*\bar{C} + A*\bar{B}*C + \bar{A}*B*C + \bar{A}*B*\bar{C}$$

- C. ★ Is there an example involving two valid inputs that demonstrates that the above device is not lenient?

**Hide Answer**

Yes. When  $A = B = 1$  and C changes, both the topmost horizontal signal and the next-to-topmost horizontal signal will change value. Depending on the relative timing of these changes there may be a moment when both signals are 0 and the rightmost column momentarily ceases to be pulled down, causing the output of the final inverter to momentarily go to zero. This output glitch means the device is not lenient.

- D. Suppose you undertake to reduce the preceding ROM implementation by eliminating any components (pulldowns, wires, and inverters) that are unused or redundant. Components are eliminated -- replaced by open circuits -- until no further components can be removed without changing the function computed by the circuit. How many word lines (horizontal lines that constitute outputs of the original decoder section of the ROM) are left after this reduction has been performed?

**Hide Answer**

The top two word lines (product terms) can be combined, as can the bottom two word lines. All the word lines that don't connect to the rightmost column can be eliminated. When the dust settles we're left with 3 word lines.

- E. Which of the following is the most accurate comparison of the reduced ROM circuit with a direct, full-complementary CMOS implementation of the same function?
1. The reduced ROM implementation uses fewer transistors.
  2. The reduced ROM implementation is faster.

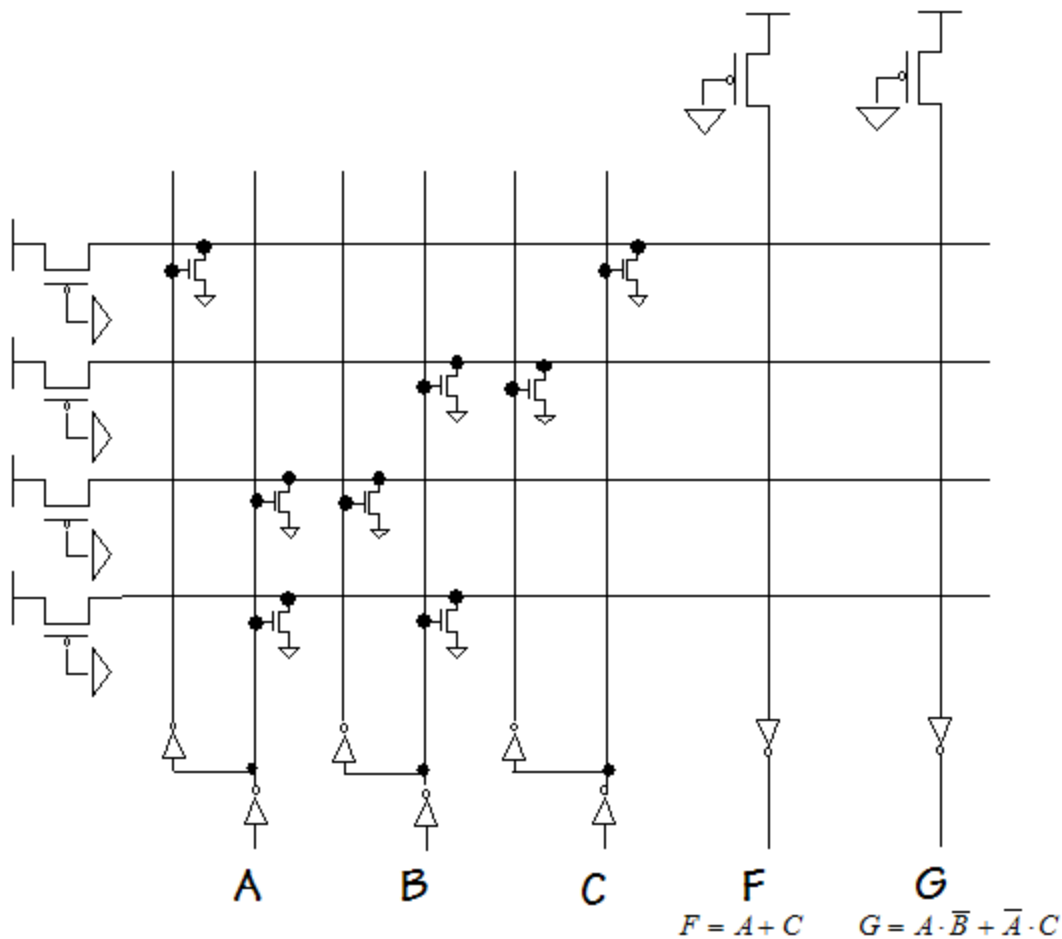
3. The reduced ROM implementation has a faster output rise time.
4. The reduced ROM implementation is essentially identical to the direct CMOS implementation.

**Hide Answer**

3. Since the ROM output is driven by an inverter (which has a single pullup PFET) it will transition faster than the output of a complex gate (which has multiple PFETs connected in series in the pullup circuitry). In terms of size and speed, the ROM is generally slower and larger than the equivalent gate.

Problem 7.

- A. Add the necessary pulldown NFETs to the F and G circuitry in the ROM circuit diagram below to implement the indicated logic functions for F and G.



**Hide Answer**

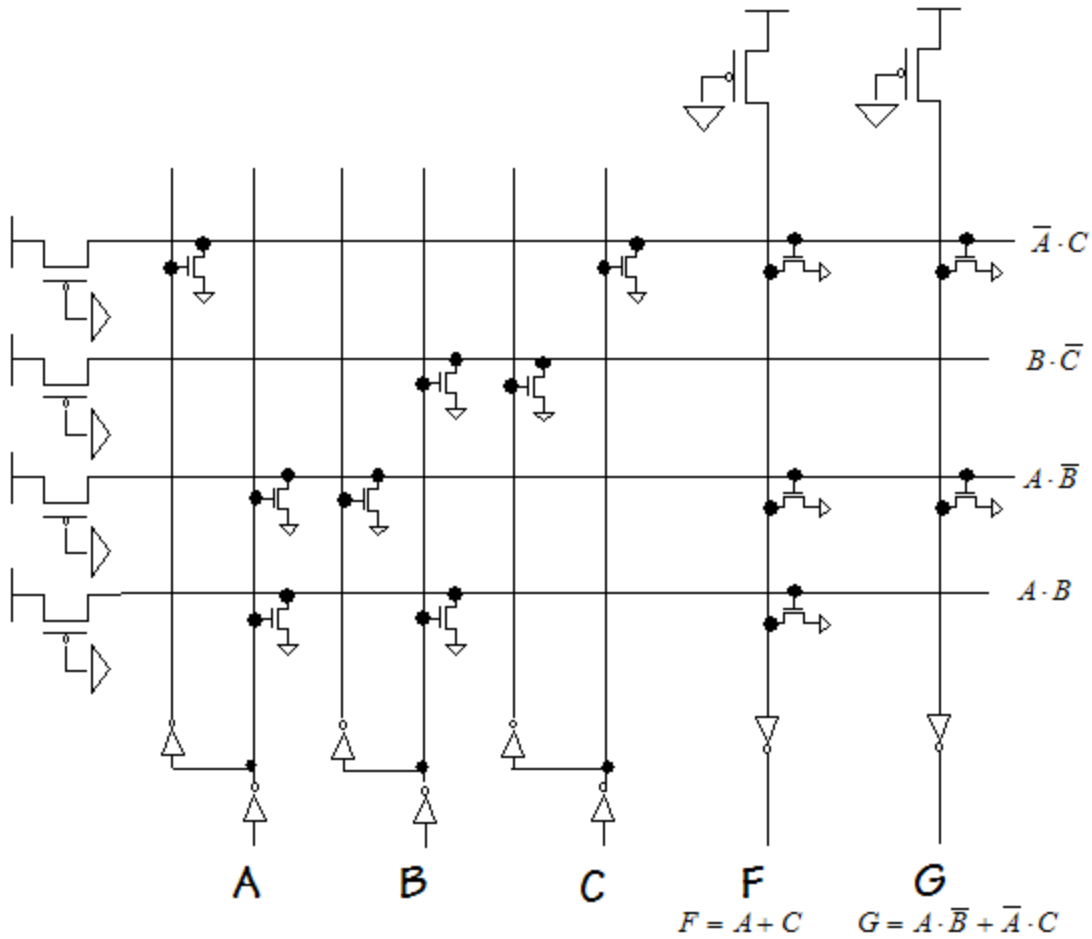
First we need to figure out the equations for each of the product terms. From top to bottom the terms are:

term 1:  $\bar{A} \cdot C$     term 2:  $B \cdot \bar{C}$     term 3:  $A \cdot \bar{B}$     term 4:  $A \cdot B$

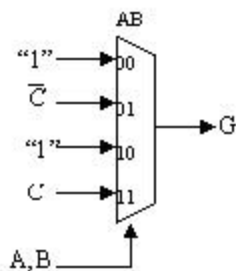
G is simply the OR of terms 1 and 3. With a little thought we can rewrite F as:

$$F = A + C = A + \bar{A} \cdot C = A(B + \bar{B}) + \bar{A} \cdot C = A \cdot B + A \cdot \bar{B} + \bar{A} \cdot C$$

which is the OR of terms 1, 3 and 4. We can now fill in the necessary pull-downs:



**Problem 8.** A certain 3-input function  $G(A,B,C)$  has the following implementation:



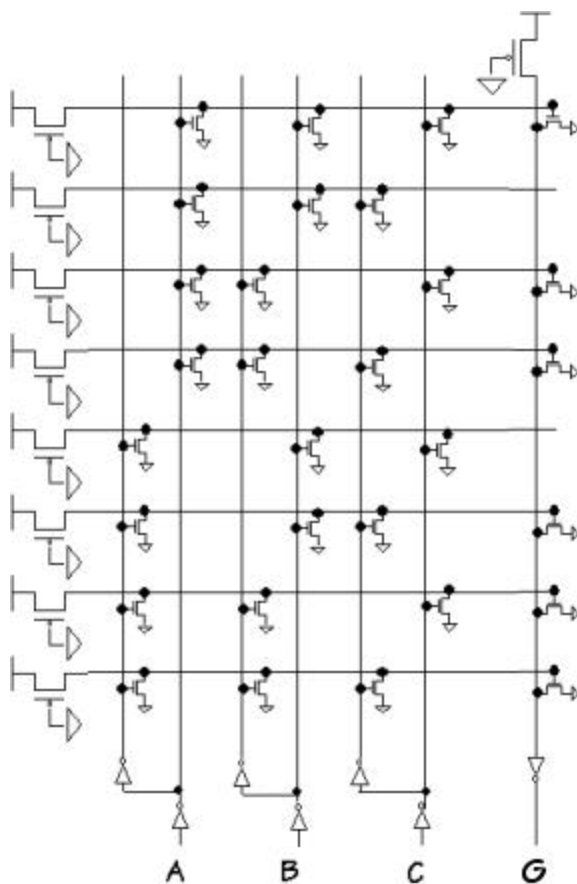
A. Give a minimal sum-of-products expression for G.

Hide Answer

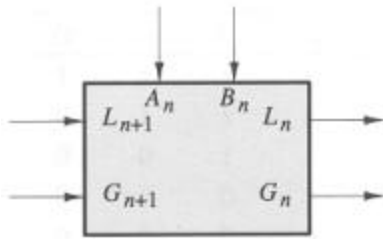
$$G = \bar{A}\bar{C} + A^*C + \bar{B}$$

B. Design a ROM implementation for G.

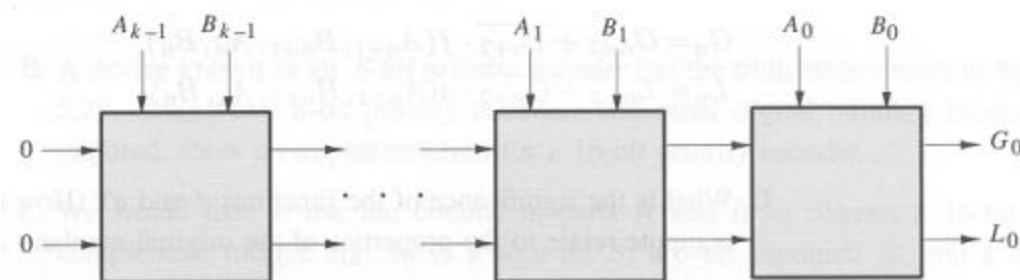
Hide Answer



Problem 9. Digital Widgets Co. has introduced a new logic IC consisting of two comparator cells in a 14-pin package. A comparator cell, as drawn below, has four inputs and two outputs.



The inputs are labeled  $A_n$ ,  $B_n$ ,  $G_{n+1}$ , and  $L_{n+1}$ , and the outputs are labeled  $G_n$  and  $L_n$ . The  $G$  and  $L$  signals have the meanings "A greater than B" and "A less than B," respectively. If both  $G$  and  $L$  are false, the meaning is  $A = B$ .  $G$  and  $L$  are never both true. Two  $k$ -bit numbers  $A$  and  $B$  may be compared using a circuit such as the following:



The most significant bits are supplied as  $A_{k-1}$  and  $B_{k-1}$ , and the least significant bits are  $A_0$  and  $B_0$ .

The output of a comparison is taken from the  $G$  and  $L$  outputs of the lowest-order cell ( $G_0$  and  $L_0$ ).  $G_{n+1}$  and  $L_{n+1}$  of the highest-order cell are connected to logical 0 to indicate that the numbers are assumed to be equal until some difference is found between a pair of bits  $A_i$  and  $B_i$ .

If the  $G_{n+1}$  and  $L_{n+1}$  inputs indicate that higher-order bits have established  $A > B$  or  $A < B$ , then cell  $n$  must propagate that result to  $G_n$  and  $L_n$ . However, if  $G_{n+1}$  and  $L_{n+1}$  indicate that the higher-order bits are equal, then cell  $n$  must compare its bit of  $A$  and  $B$  to determine if  $A > B$ ,  $A < B$ , or  $A = B$  and must signal that result appropriately at  $G_n$  and  $L_n$ .

- A. Draw a logic diagram for an implementation of the Digital Widgets comparator cell.

**Hide Answer**

The equations for  $G_n$  and  $L_n$  are

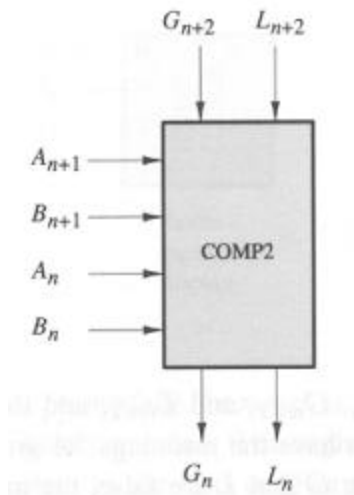
$$G_n = G_{n+1} + \overline{L_{n+1}} \cdot A_n \cdot B_n$$

$$L_n = L_{n+1} + \overline{G_{n+1}} \cdot A_n \cdot B_n$$

If we construct a schematic using  $INV$ ,  $AND$  and  $OR$ , the resulting circuit would have a  $T_{pd}$  of 3 gate delays.

- B. Since there is delay associated with the propagation of the  $G$  and  $L$  signals through

each cell, we could make the comparator work faster by redesigning the basic cell to compare two bits at a time, halving the number of stages through which the G and L signals will need to propagate.



Work out expressions for  $G_n$  and  $L_n$  as functions of  $G_{n+2}$ ,  $L_{n+2}$ ,  $A_{n+1}$ ,  $B_{n+1}$ ,  $A_n$ , and  $B_n$ . Express your answers in the form

$$G_n = G_{n+2} + \overline{L_{n+2}} \cdot f(A_{n+1}, B_{n+1}, A_n, B_n),$$

$$L_n = L_{n+2} + \overline{G_{n+2}} \cdot g(A_{n+1}, B_{n+1}, A_n, B_n).$$

**Hide Answer**

$$G_n = G_{n+2} + \overline{L_{n+2}} \cdot (\overline{A_{n+1}} \cdot \overline{B_{n+1}} + (A_{n+1} \cdot B_{n+1} + \overline{A_{n+1}} \cdot \overline{B_{n+1}}) \cdot \overline{A_n} \cdot \overline{B_n})$$

$$L_n = L_{n+2} + \overline{G_{n+2}} \cdot (\overline{A_{n+1}} \cdot \overline{B_{n+1}} + (A_{n+1} \cdot B_{n+1} + \overline{A_{n+1}} \cdot \overline{B_{n+1}}) \cdot \overline{A_n} \cdot \overline{B_n})$$

- C. Given a reasonable implementation of the equations for  $G_n$  and  $L_n$  derived in part B, how does the delay from a change in  $G_{n+2}$  and  $L_{n+2}$  to the appearance of correct outputs at  $G_n$  and  $L_n$  compare with the corresponding delay for a circuit composed of a cascade of two of the cells developed in part A? Assume that all A and B inputs remain unchanged throughout.

*Note:* The reason for our interest in the propagation delay of the G and L signals, specifically, is that in a chain of N comparators, every extra gate delay in the G--L path will penalize total performance by N gate delays. The time it takes for a change in an A or B input to be reflected in the corresponding G or L output is also important, but improvements here can at best result in decreasing total delay by some constant amount.

**Hide Answer**

If we expand out either equation for the two-bit-at-a-time cell, we end up with 4 product terms, two of which involve 5 inputs. If we have 5-input gates in our library, we can implement the two-bit cell with the same  $T_{pd}$  as the one-bit cell. So  $G_n$  and  $L_n$  are produced by a two-bit cell with half the delay as from a cascade of two one-bit cells.

If we restrict ourselves to 4-input gates, this adds one gate delay to  $T_{pd}$  for the two-bit cell ( $T_{pd} = 4$ ), still an improvement over two one-bit cells ( $T_{pd} = 6$ ).