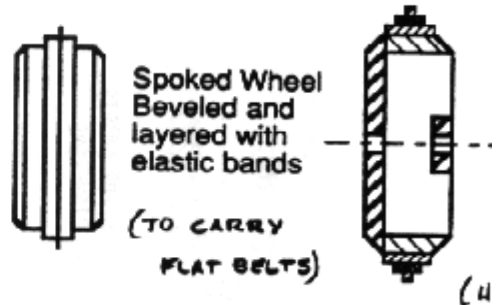
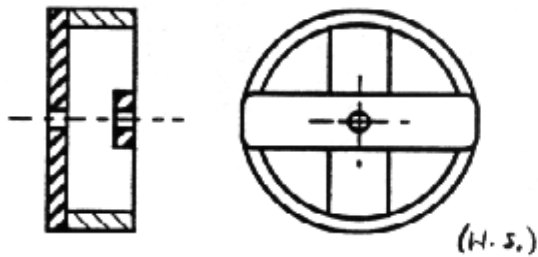


# 2.007 Cookbook: Wheels

## MISCELLANEOUS WHEEL EXAMPLES:

spoked wheel (section and side view)



Wheel Hubs for...

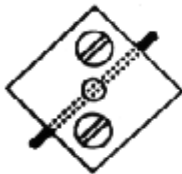
cotter pin or roll pin



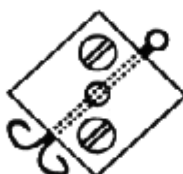
set screw



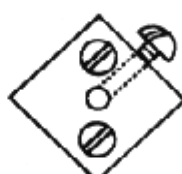
(C.M.)



roll pin (spring pin)

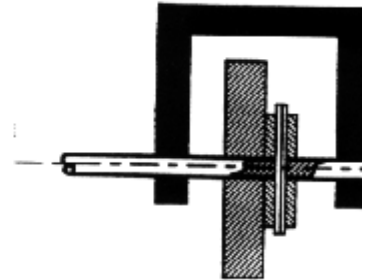


cotter pin

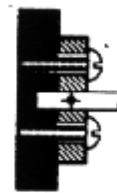


set screw

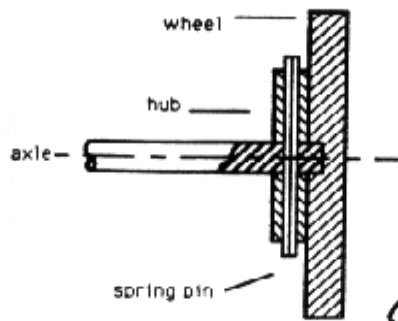
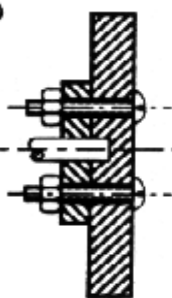
FREE WHEEL MOUNTED INSIDE LARGE BRACK



WHEEL WITH OUTSIDE FACE KEPT "CLEAN" BY THREADING THE PLASTIC W FOR THE SCREW (NO NUTS) (BR. FAI)

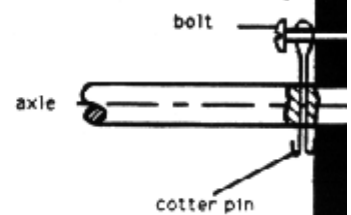


PINNED HUBS: TWO SECTION VIEWS



(U.S.)

NOT RECOMMENDED:



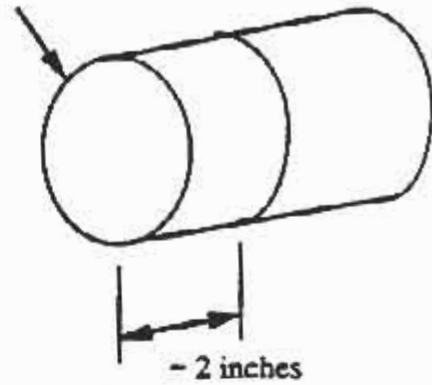
(DRAWN BY H.S.)

## LARGE DIAMETER SPOKED WHEELS

Materials:  
Any of the paper tubes  
Wooden slat or plywood

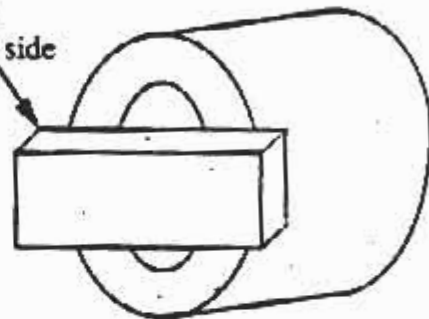
1. On the table saw, cut off a two inch section

Original paper tubing



2. On opposite ends, glue two pieces of the slat so they are perpendicular. These will serve as spokes. You can recess the spokes into the tube by morticing grooves.

Section of wooden slat (also on other side in perpendicular position).



3. Chuck the ass'y in a lathe and drill a hole. (A lathe ensures concentricity).

2 inch section with slats glued. Polka dots show slats in morticed position

