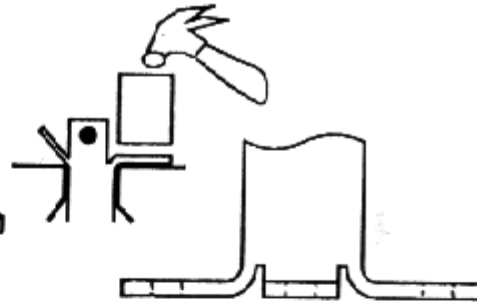
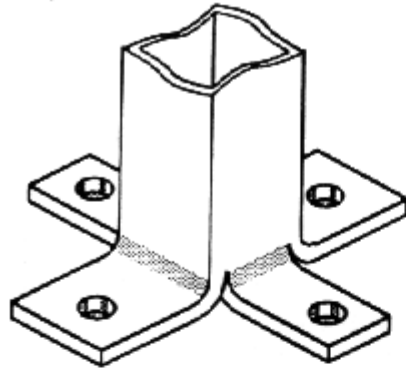


2.007 Cookbook: Column Base

COLUMN BASE



Provides a sturdy attachment that resists tilting moments in all directions.

Material:

1" square extruded aluminum box section, length as desired.

Procedure:

1. Draw lines one inch from the end of the stock. These will be the bending lines.
2. Drill holes clear through this end of the stock in both directions, to make holes in all four sides. (Recommended dia.: 9/64" or #28 drill, for #6 screw.) Also make now any cuts or holes needed in the other end, since that's easiest while the stock is still bar-shaped.
3. Make saw cuts slightly over 1 inch long just inside two faces, so as to separate these faces from the other two.
4. Bend out 1 inch long tabs from the four separated faces. Be sure to make all the bends at the bend line. (The extra bit of saw cut is to reduce the risk of tearing at the ends of the cuts, which can happen if the bends are done too close to them.) Use a hammer, vise, and woodblock to bend.

