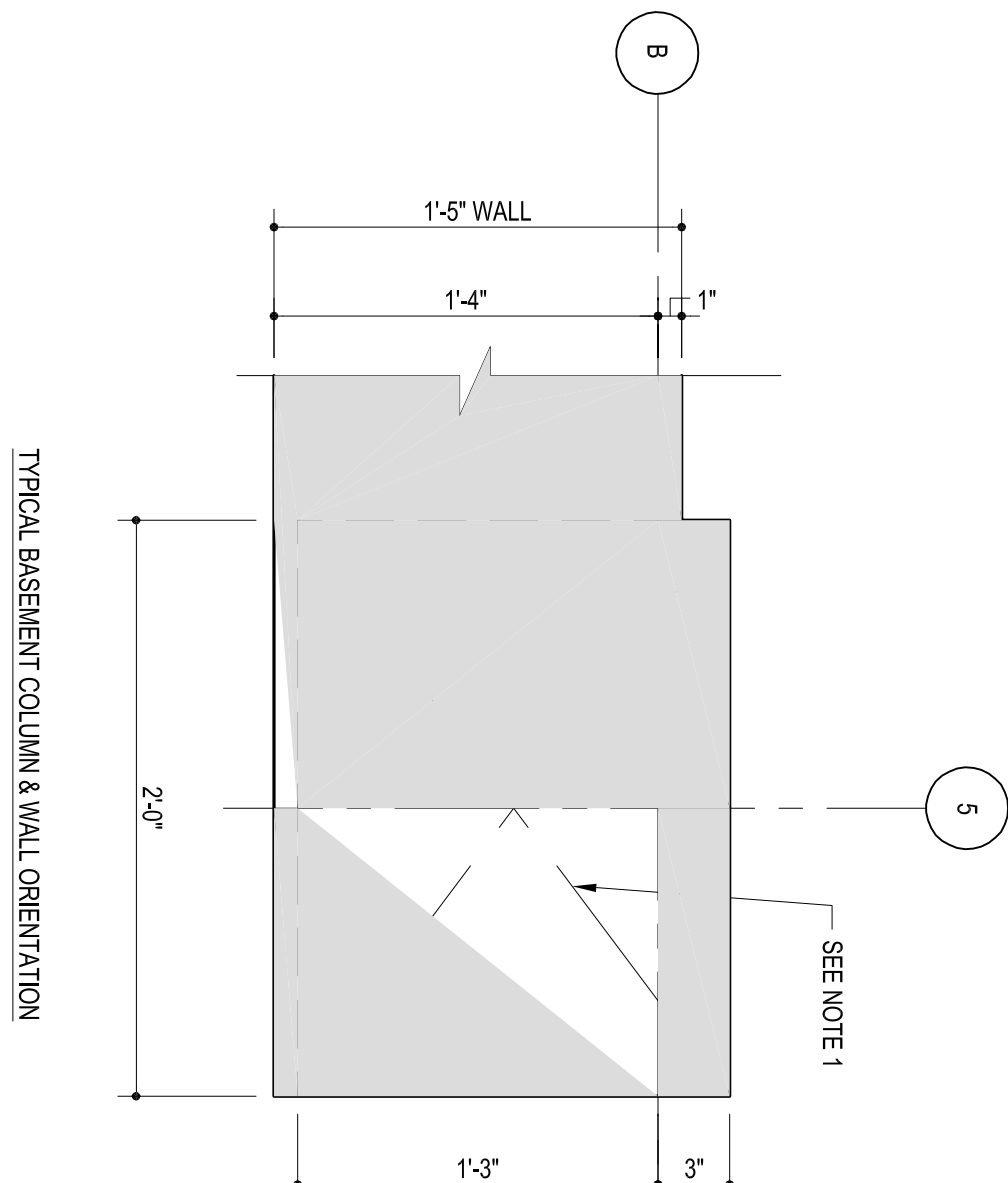
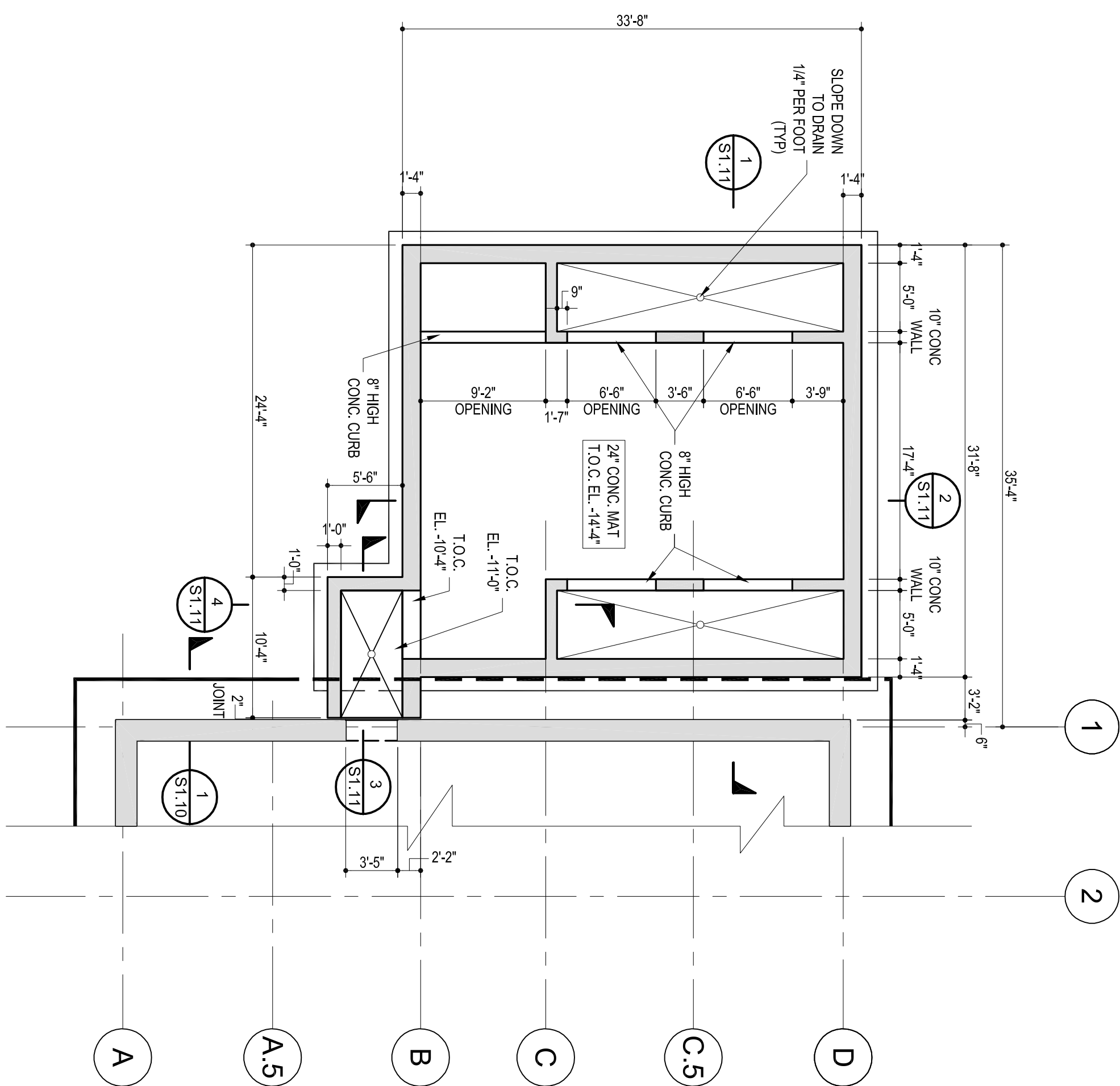
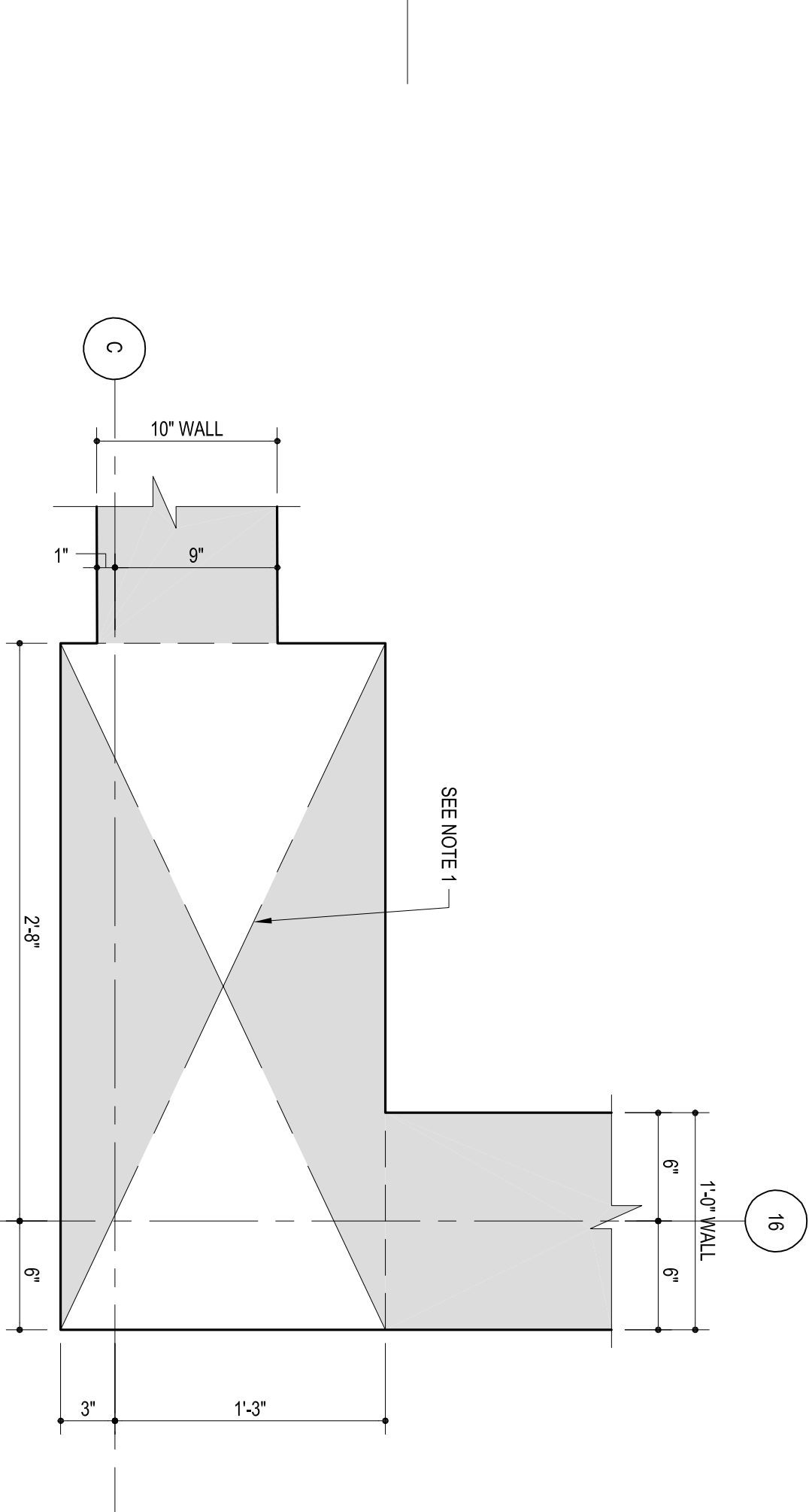


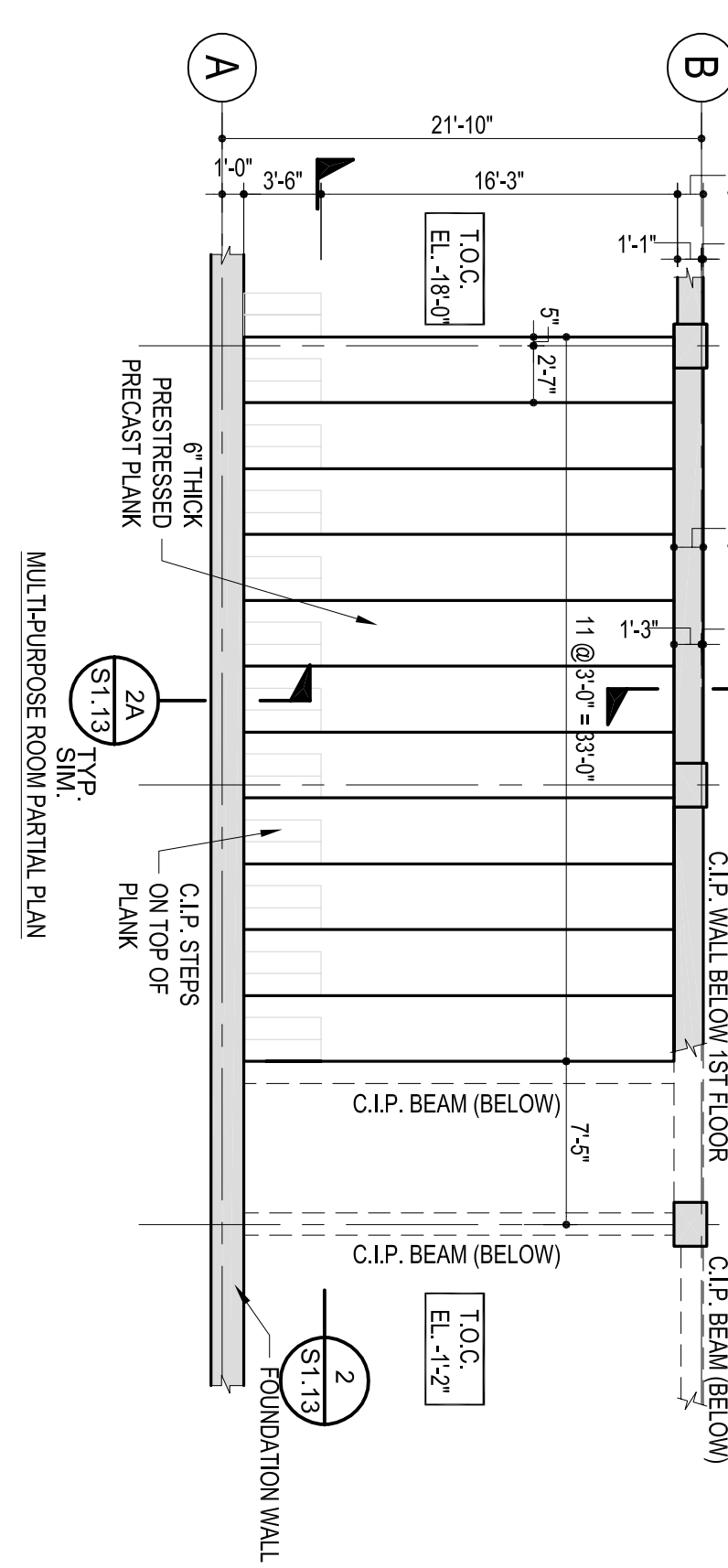
SCALE: 1/8"=1'-0"



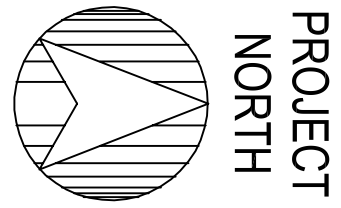
S1.01



S1.01



1. IDENTIFY THE LOCATION OF ALL ELECTRICAL PANELS, TRANSFORMERS, AND UTILITIES. SEE DRAWINGS OF OTHERS.
2. CONDUCT AN EDUCATION MEETING WITH OWNERS.
3. FOR PANELS OF 400 A OR BELOW, 4" NAT. DOWELS.
4. REFER TO DRAWING SLS-1.0322 FOR TYPICAL DETAILS.
5. FOR SIZE & LOCATION OF ALL REINFORCING.
6. PROVIDE REINFORCING PER DRAWING OF OTHERS.
7. FOR SIZE & LOCATION OF ALL REINFORCING PER DETAIL.
8. COORDINATE ANCHOR BOLT SIZE, LOCATIONS PER ELEVATOR WORKMEN W/ MANUFACTURER'S REQUIREMENTS.
9. SEE PLUMBING NOTES FOR DETAILS NOT SHOWN, INCLUDING LOCATIONS OF PLUMBING, GAS, AND VENT LINES. PROVIDE MECHANICAL WITH THE LOCATION, SIZE, AND TYPE OF ALL VENTS.
10. SET ELECTRICAL PANELS FOR TALL SHOWN INCLUDING LOCATIONS AND DETAILS OF ELECTRICAL PANELS AND CABLE DISHES.
11. VENT TO NAT. VENTILATION.
12. VENT TO DOWNSTREAM LOCATIONS OF 3" DIA. WALL DOWNS WITH

[illegible]