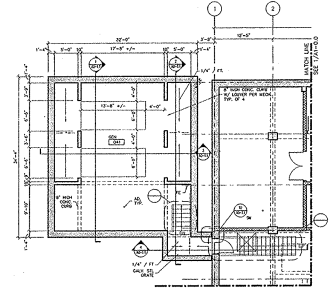
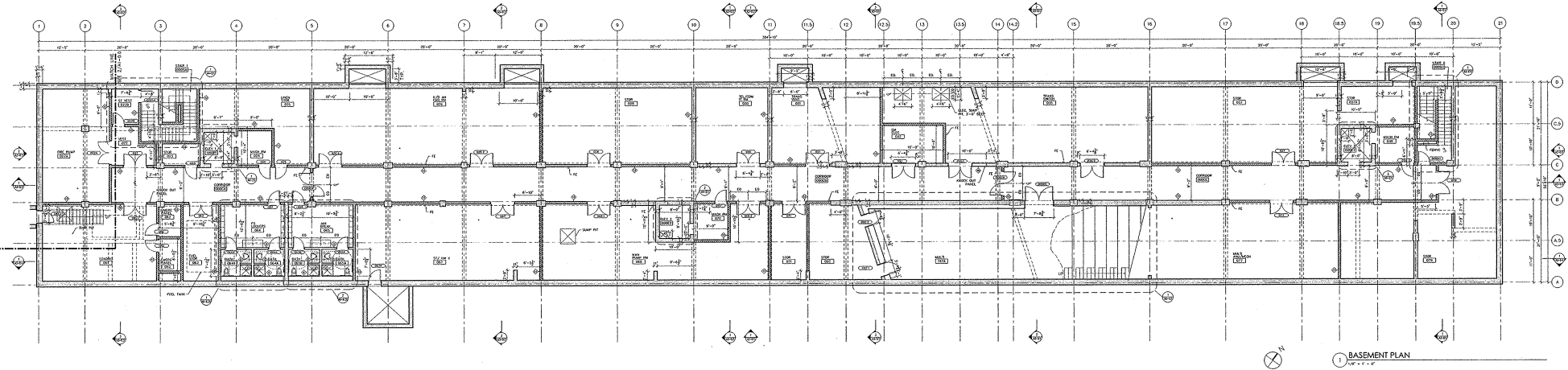


Courtesy of James Parker and Amy Stern. Used with permission.



2 GENERATOR ROOM PLAN
1/8" = 1' - 0"



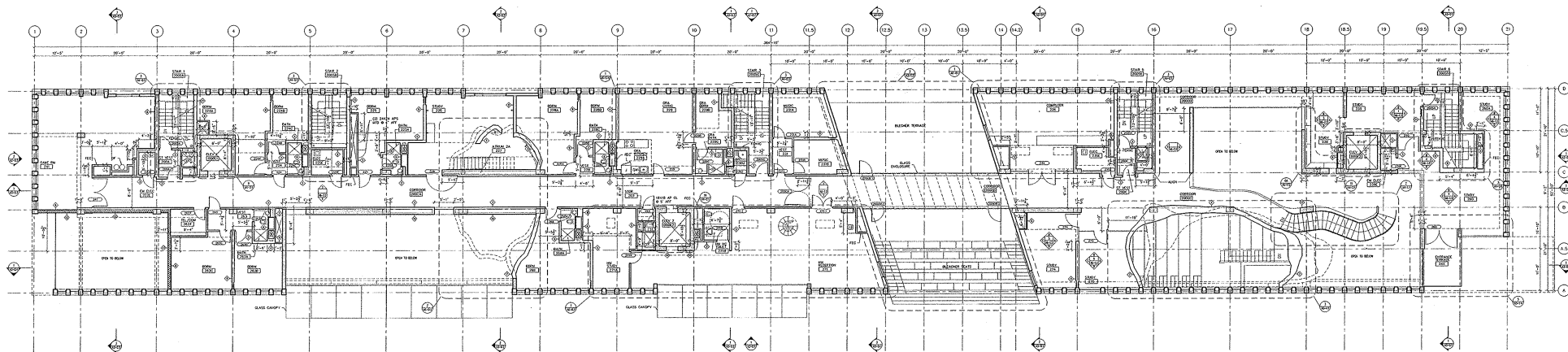
1 BASEMENT PLAN
1/8" = 1' - 0"

J:\3912\DRAWINGS\CD\SHEETS\MTA1-000.DWG

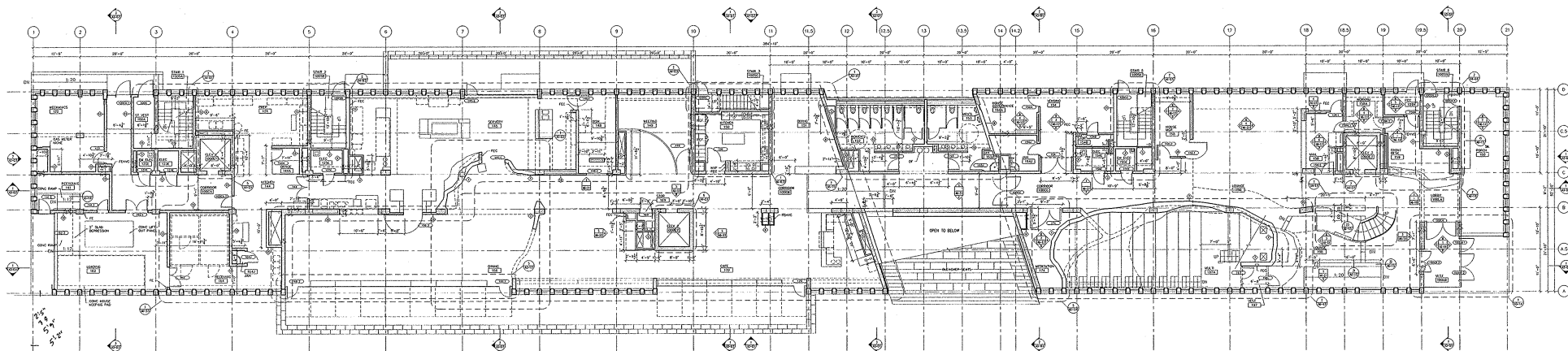
<p>FIELD ENGINEERS: R. D. VANDERHART ENGINEERS, INC. 250 WASHINGTON STREET BOSTON, MA 02108-1120 617 452-7022 FAX 617 355-7176</p>	<p>SECURITY CONSULTANTS: MICHAEL SCHIFF AND ASSOCIATES 100 MAIN STREET BOSTON, MA 02108 617 351-4421 FAX 617 351-1746</p>	<p>FOOD SERVICE CONSULTANTS: CHAUTAUQUE, INC. 385 HANOVER AVENUE, ROOM 102A NEW YORK, NY 10046-0008 212 397-0572 FAX 212 397-0587</p>	<p>MEP ENGINEERS: OYES ASSOCIATES & PARTNERS 100 WASHINGTON STREET, 10TH FLOOR CAMBRIDGE, MA 02139 617 554-2952 FAX 617 554-6175</p>	<p>ASSOCIATE STRUCTURAL ENGINEER: SHAWSON CHAMBERLAIN & HEDGER, INC. 201 BROADWAY ARLINGTON, MA 02174-8310 781 444-3200 FAX 781 443-9309 SGH @ SGH.COM</p>	<p>STRUCTURAL ENGINEER: GUY HOKKENDON AND ASSOCIATES LLP 100 BROADWAY, 10TH FLOOR NEW YORK, NY 10008 212 761-7771 FAX 212 761-1014 AAL @ HOKKENDON.COM</p>	<p>CIVIL ENGINEERS: SEA CONSULTANTS, INC. & PARTNERS 400 MASSACHUSETTS AVENUE CAMBRIDGE, MA 02139 617 477-7220 FAX 617 477-4972</p>	<p>SURVEYOR: CULLMAN ENGINEERING CO. 400 COMMONWEALTH AVENUE, 3RD FL. BOSTON, MA 02215 617 554-8000 FAX 617 554-8005 CULLMAN@CULLMAN.COM</p>	<p>ASSOCIATE ARCHITECTS: PETER DEAN ROGERS & PARTNERS 177 MAIN STREET BOSTON, MA 02109 617 450-0100 FAX 617 454-0274</p>	<p>ARCHITECTS: STEVEN HOLZ ARCHITECTS & PARTNERS 400 WEST BROADWAY, 11TH FL. NEW YORK, NEW YORK 10011 212 675-1201 FAX 212 675-1212 MAIL @ STEVENHOLZ.COM</p>
--	---	---	--	--	--	---	--	--	---

MASSACHUSETTS INSTITUTE OF TECHNOLOGY
UNDERGRADUATE RESIDENCE 2001
BUILDING 18B
229 VASSAR STREET
CAMBRIDGE, MA 02139

DATE	10.16.00	PROJECT	3912	PROJECT	MTA1-000.DWG
SCALE	1/8" = 1' - 0"	DISCIPLINE	SP	REVISION	
BASEMENT PLAN					
A1				0.0	

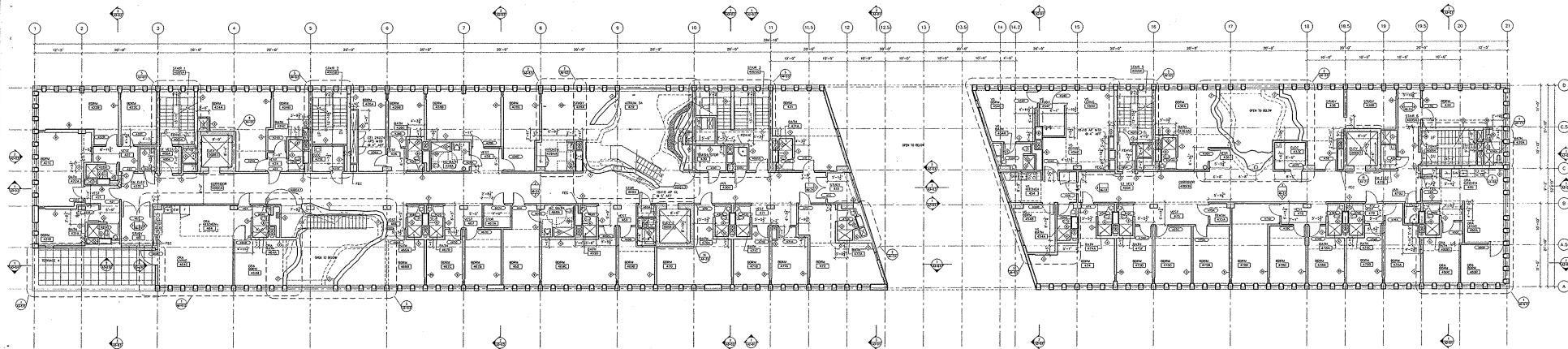


2 SECOND FLOOR PLAN
1/8" = 1'-0"

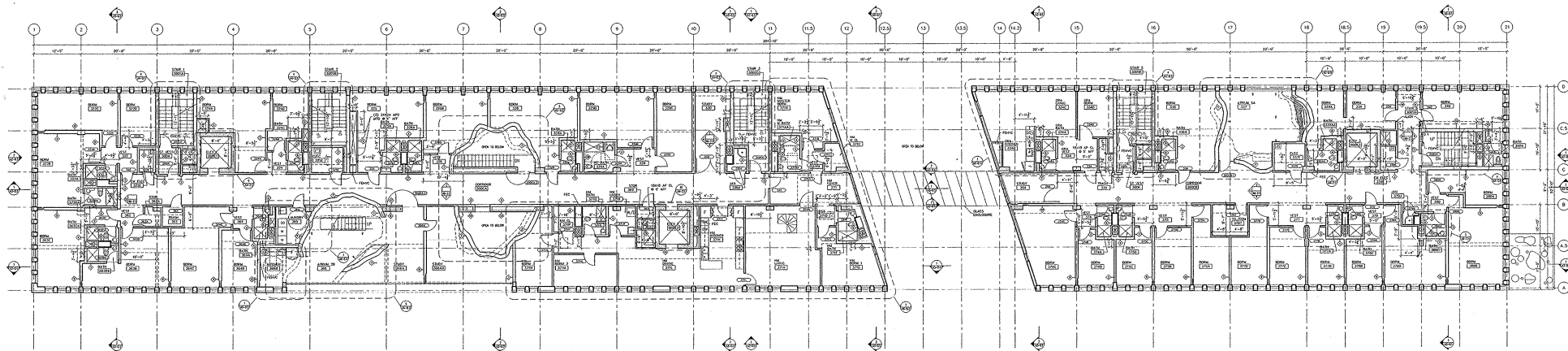


1 FIRST FLOOR PLAN
1/8" = 1'-0"

<p>PREPARED BY: R. G. VANDERVEL ENGINEERS, INC. 100 HANOVER STREET BOSTON, MA 02111-1113 617 452-7000 FAX 617 530-1100</p>	<p>SECURITY CONSULTANT: KROLL SCHIFF AND ASSOCIATES 100 HANOVER STREET BOSTON, MA 02111-1113 617 452-7000 FAX 617 530-1100</p>	<p>FOOD SERVICE CONSULTANT: CHURCHILL, INC. 300 HANOVER STREET BOSTON, MA 02111-1113 617 452-7000 FAX 617 530-1100</p>	<p>MEP ENGINEER: OYE & ASSOCIATES 100 HANOVER STREET BOSTON, MA 02111-1113 617 452-7000 FAX 617 530-1100</p>	<p>ASSOCIATE STRUCTURAL ENGINEER: SIMPSON QUAMPERT & HEDER, INC. 100 HANOVER STREET BOSTON, MA 02111-1113 617 452-7000 FAX 617 530-1100</p>	<p>STRUCTURAL ENGINEER: GUY HORDENSON AND ASSOCIATES LLP & HEDER, INC. 100 HANOVER STREET BOSTON, MA 02111-1113 617 452-7000 FAX 617 530-1100</p>	<p>CIVIL ENGINEER: SEA CONSULTANTS, INC. 100 HANOVER STREET BOSTON, MA 02111-1113 617 452-7000 FAX 617 530-1100</p>	<p>SUPPLIER: CULINARI ENGINEERING CO. 100 HANOVER STREET BOSTON, MA 02111-1113 617 452-7000 FAX 617 530-1100</p>	<p>ASSOCIATE MECHANICAL ENGINEER: PERRY DEAN ROGERS & PARTNERS 100 HANOVER STREET BOSTON, MA 02111-1113 617 452-7000 FAX 617 530-1100</p>	<p>ARCHITECT: STEVEN HOLL ARCHITECTS 100 HANOVER STREET BOSTON, MA 02111-1113 617 452-7000 FAX 617 530-1100</p>	<p>MASSACHUSETTS INSTITUTE OF TECHNOLOGY UNDERGRADUATE RESIDENCE 2001 BUILDING MAP 220 VASSAR STREET CAMBRIDGE, MA 02139</p>	<p>10.16.00 1/8" = 1'-0" 20" FIRST AND SECOND FLOOR PLANS</p>	<p>MIT PROJECT #9111</p>	<p>A1 0.1</p>
--	--	--	--	---	---	---	--	---	---	--	---	--------------------------	---------------



FOURTH FLOOR PLAN
1/8" = 1' - 0"



THIRD FLOOR PLAN
1/8" = 1' - 0"

PLP ENGINEERS
R. G. VANDERWEL
ENGINEERS, INC.
374 DAVENANT STREET
BOSTON, MA 02210-1133
617 453-7400 FAX 617 550-7184

DESIGN CONSULTANTS
KIRCH SCHIFF
AND ASSOCIATES
1050 MAIN STREET
BOSTON, MA 02111
617 337-4021 FAX 617 337-4744

FOOD SERVICE CONSULTANTS
CHINATILE, INC.
355 MADISON AVENUE, ROOM 2204
1007 YORK AVENUE
BOSTON, MA 02111
617 337-0072 FAX 617 337-0087

MEP ENGINEERS
ONE AIRUP
& PARTNERS
155 MASSACHUSETTS AVENUE
CAMBRIDGE, MA 02139
617 864-3919 FAX 617 864-6178

ASSOCIATE STRUCTURAL ENGINEER
SIMPSON QUAMPERT
& HECHT, INC.
371 BROADWAY
BOSTON, MA 02108-0104
617 463-7000 FAX 617 463-7009
WWW.SQ-CON.COM

STRUCTURAL ENGINEER
GUY MCARDEN
& ASSOCIATES LLP
1100 STATE STREET, 10TH FLOOR
BOSTON, MA 02111
617 724-1119 FAX 617 724-1014
WWW.GUY-MCARDEN.COM

CIVIL ENGINEERS
SEA CONSULTANTS, INC.
18 MASSACHUSETTS AVENUE
CAMBRIDGE, MA 02139
617 487-7600 FAX 617 478-4472

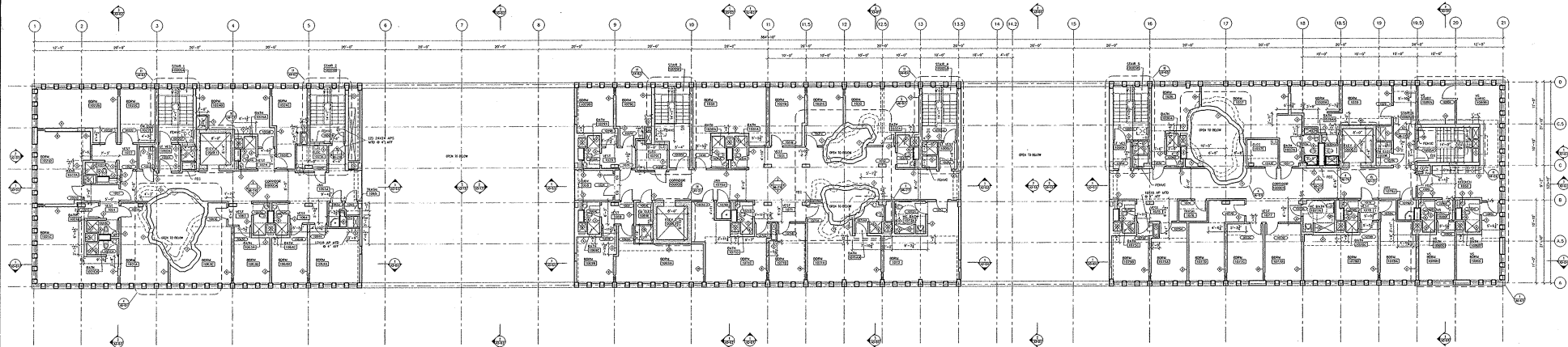
SUPVISOR
CULLINANE
ENGINEERING CO.
400 COMMERCIAL AVENUE, 3RD FL.
BOSTON, MA 02110
617 338-6875 FAX 617 338-6879
CULLINANE & ASSOCIATES

ASSOCIATE ARCHITECTS
PERKINS DEAN ROGERS
& PARTNERS
117 MAIN STREET
BOSTON, MA 02110
617 453-0100 FAX 617 453-0274

ARCHITECTS
STEVEN HOLL ARCHITECTS
410 WEST 20TH STREET, 10TH FL.
NEW YORK, NEW YORK 10011
212 678-7538 FAX 212 678-7532
WWW.SH-ARCHITECTS.COM

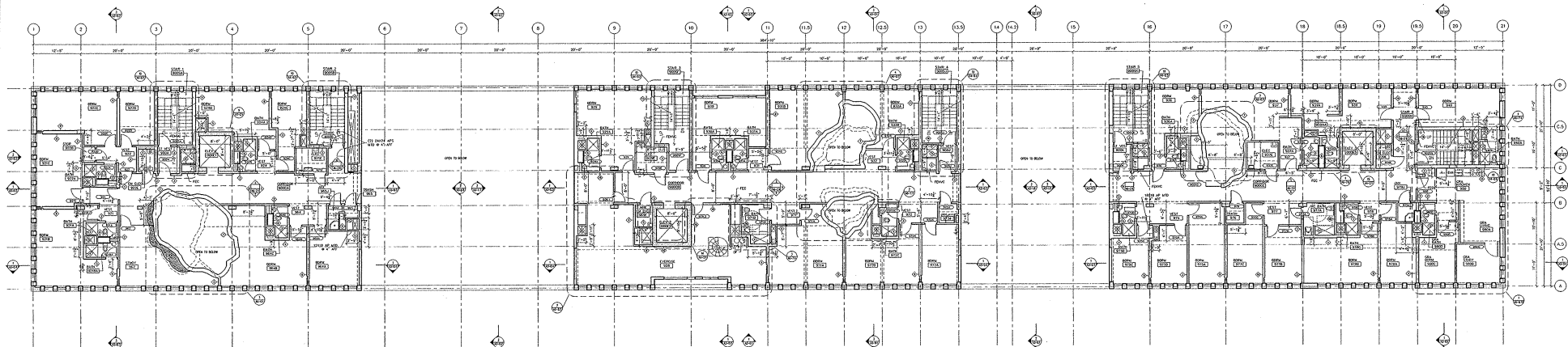
MASSACHUSETTS INSTITUTE OF TECHNOLOGY
UNDERGRADUATE RESIDENCE 2001
BUILDING W69
220 VASSAR STREET
CAMBRIDGE, MA 02139

DATE 10.16.00
SCALE 1/8" = 1' - 0"
PROJECT MITA1-002.DWG
SHEET 0001
THIRD AND FOURTH
FLOOR PLANS



NOTE:
FOR TYPICAL STUDENT BEDROOM
DETAILS REFER TO SHEET AB 01.

2 TENTH FLOOR PLAN
1/8" = 1'-0"



NOTE:
FOR TYPICAL STUDENT BEDROOM
DETAILS REFER TO SHEET AB 01.

1 NINTH FLOOR PLAN
1/8" = 1'-0"

FREE PLANT ENGINEERS:
R. C. VANDERBEEK
ENGINEERS, INC.
264 FARMERS STREET
BOSTON, MA 02210-1120
617 423-9223 FAX 617 350-7181

SECURITY CONSULTANTS:
KROLL CORP.
AND ASSOCIATES
1000 MARKET STREET
KARSPON, NJ 07835
973 331-4571 FAX 973 331-1794

POOD SERVICE CONSULTANTS:
CHALUPE, INC.
382 MASSACHUSETTS AVENUE 200A
NEW YORK, NY 10045-0036
212 274-0292 FAX 212 274-0887

MEP ENGINEERS:
CIVIL GROUP
AND ASSOCIATES
277 BROADWAY
ANNAPOLIS, MD 21404-5510
781 440-0260 FAX 781 440-0269
CGI @ CGI.COM

STRUCTURAL ENGINEERS:
SHAWSON CLAMBERT
& PARTNERS
277 BROADWAY
ANNAPOLIS, MD 21404-5510
781 440-0260 FAX 781 440-0269
CGI @ CGI.COM

CIVIL ENGINEERS:
SEA CONSULTANTS, INC.
& PARTNERS
48 MASSACHUSETTS AVENUE
CAMBRIDGE, MA 02139
617 457-7900 FAX 617 458-6452

SURVEYOR:
CELEBRUM
ENGINEERING CO
680 COMMONWEALTH AVENUE 301A
BOSTON, MA 02215
617 554-8800 FAX 617 554-8875
CELEBRUM @ AOL.COM

ASSOCIATE ARCHITECT:
BERRY DEAN ROGERS
& PARTNERS
1744 AVENUE
BOSTON, MA 02116
617 450-0100 FAX 617 434-0274

ARCHITECT:
BERRY DEAN ROGERS
& PARTNERS
1744 AVENUE
BOSTON, MA 02116
617 450-0100 FAX 617 434-0274
BERRY @ BERRYDEAN.COM

DATE: 10.16.00
SHEET: 3912
SCALE: 1/8" = 1'-0"
PROJECT: MASSACHUSETTS INSTITUTE OF TECHNOLOGY UNDERGRADUATE RESIDENCE 2001

BUILDING NAME:
200 VASSAR STREET
CAMBRIDGE, MA 02139

PROJECT NUMBER:
MASSACHUSETTS INSTITUTE OF TECHNOLOGY UNDERGRADUATE RESIDENCE 2001

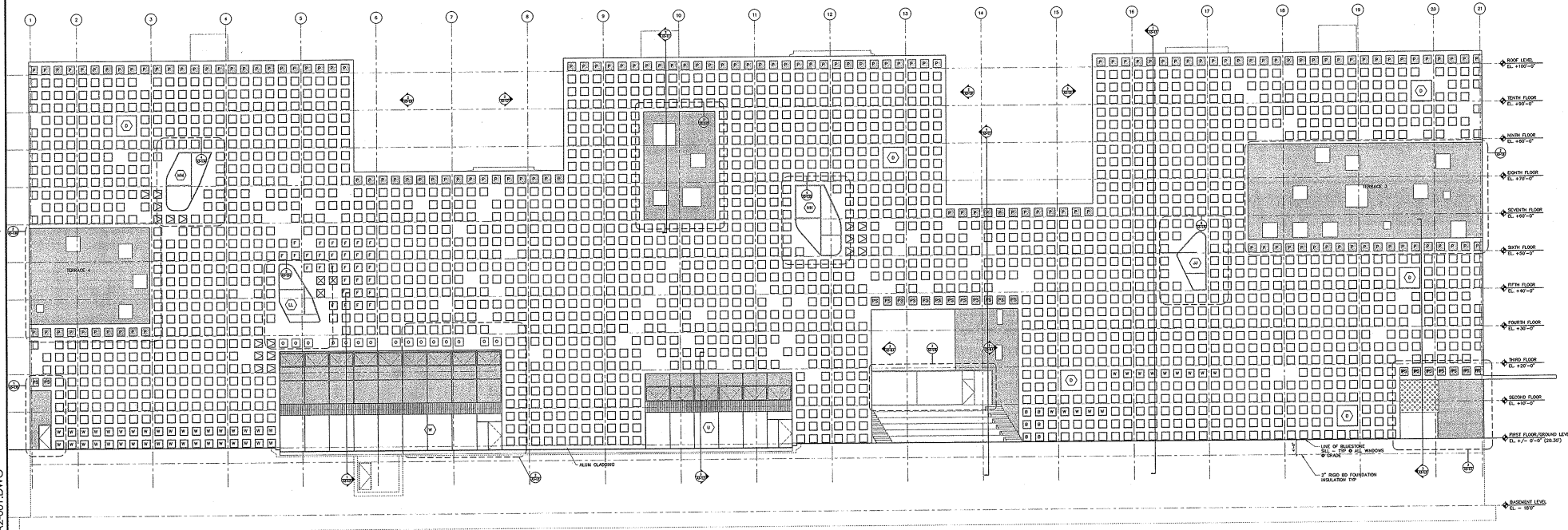
DATE: 10.16.00
SHEET: 3912
SCALE: 1/8" = 1'-0"
PROJECT: MASSACHUSETTS INSTITUTE OF TECHNOLOGY UNDERGRADUATE RESIDENCE 2001

BUILDING NAME:
200 VASSAR STREET
CAMBRIDGE, MA 02139

PROJECT NUMBER:
MASSACHUSETTS INSTITUTE OF TECHNOLOGY UNDERGRADUATE RESIDENCE 2001

3912\DRAWINGS\DD\001\001.DWG

WINDOW UNIT SCHED.		ELEVATION LEGEND	
-HIDE ON EAST SIDE TOP 10' NORTH & SOUTH ELEVATION NORTH - 10' WEST ELEVATION ELEVATION PARTITION SIDE THERE PARTITION CODE		<input type="checkbox"/> TYPICAL WINDOW TYPE "A" <input type="checkbox"/> CORNER WINDOW TYPE "B" <input type="checkbox"/> 10' - 10' HILL <input type="checkbox"/> PERFORATED ALUMINUM INFILL PANEL <input type="checkbox"/> SPANIEL PANEL <input type="checkbox"/> SPECIAL WINDOW TYPE "A" W/ <input type="checkbox"/> METAL CLADDING PLATE <input type="checkbox"/> METAL WINDOW TYPE "A" W/ <input type="checkbox"/> METAL CLADDING PLATE	
		<input checked="" type="checkbox"/> PERFORATED ALUMINUM INFILL PANEL <input checked="" type="checkbox"/> SPANIEL PANEL <input checked="" type="checkbox"/> SPECIAL WINDOW TYPE "A" W/ <input checked="" type="checkbox"/> METAL CLADDING PLATE <input checked="" type="checkbox"/> METAL WINDOW TYPE "A" W/ <input checked="" type="checkbox"/> METAL CLADDING PLATE	



1 SOUTH ELEVATION

NON-SHADED AREAS INDICATE
ALUM CLADDING SYSTEM 2

SHADED AREAS INDICATE
PERFORATED METAL PANELS
SYSTEM 1

PREPARED BY: B. G. VANDERKAM ENGINEERS, INC. 225 SUMMIT STREET BOSTON, MA 02215-1125 617 452-1425 FAX 617 380-1744	SCHEMATIC DEVELOPMENT: KROLL SCHIFF AND ASSOCIATES 100 HAWTHORNE BOSTON, MA 02118-2024 617 351-4425 FAX 617 351-1744	FOOD SERVICE CONSULTANTS: CM-LITTLE, INC. 264 HANCOCK AVENUE, ROOM 204 NEW YORK, NY 10101-0024 212 261-4425 FAX 212 261-0207	MECHANICAL ENGINEERS: OVE ARUP & PARTNERS 100 HANCOCK AVENUE CAMBRIDGE, MA 02142 617 848-1425 FAX 617 848-1475	ASSOCIATE STRUCTURAL ENGINEER: SIMPSON GUMPERT & HEDER, INC. 277 BROADWAY AUBURN, MA 01545-0001 508 838-1425 FAX 508 838-1475	STRUCTURAL ENGINEER: GUY HORDENSON AND ASSOCIATES LLP 100 HANCOCK AVENUE NEW YORK, NY 10101-0024 212 261-4425 FAX 212 261-1744 MAIL: @ HORDENSON.COM	CIVIL ENGINEERS: SEA CONSULTANTS, INC. 464 MASSACHUSETTS AVENUE CAMBRIDGE, MA 02139 617 452-1425 FAX 617 452-1475	SURVEYOR: CULLINAN ENGINEERING CO. 400 CONSUMERS AVENUE, 3RD FL. BOSTON, MA 02118 617 554-1425 FAX 617 554-1475 CULLINAN @ AOL.COM	ASSOCIATE ARCHITECT: PERRY DEAN ROGERS & PARTNERS 177 MAK STREET BOSTON, MA 02118 617 452-1425 FAX 617 452-1475	ARCHITECT: STEVEN HOLL ARCHITECTS 400 WEST 33RD STREET, 10th FL. NEW YORK, NY 10001-2003 212 675-1425 FAX 212 675-1475 HOLL @ STEVENHOLL.COM	SOUTH ELEVATION	MASSACHUSETTS INSTITUTE OF TECHNOLOGY UNDERGRADUATE RESIDENCE 2001 BUILDING WEB 220 VASSAR STREET CAMBRIDGE, MA 02139	10.16.00 3712 85 SOUTH ELEVATION	A2 0.1
---	---	--	---	--	--	---	--	--	---	-----------------	---	---	-----------

00

SHADED AREAS INDICATE PERFORATED METAL PANELS SYSTEM 1

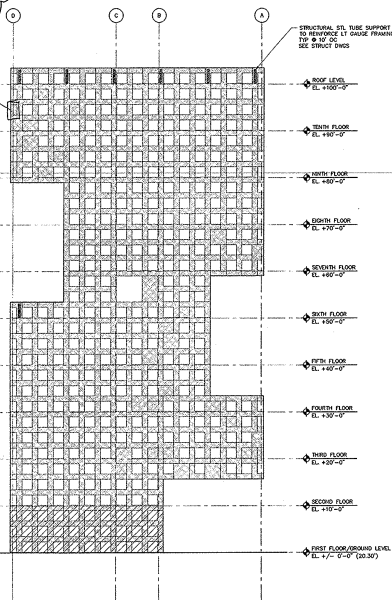
A2	0.2
----	-----

02 MITA2-002

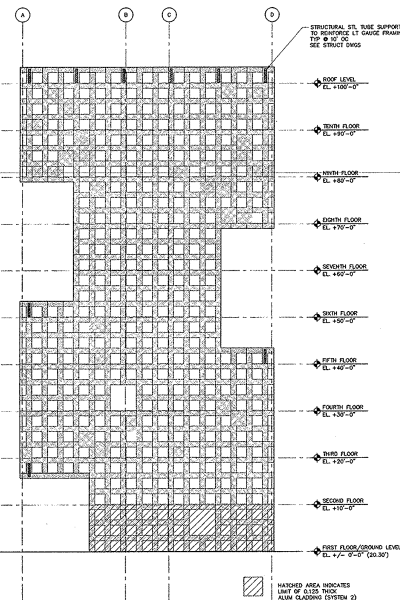
NE PROJECT ABILITY

NORTH ELEVATION

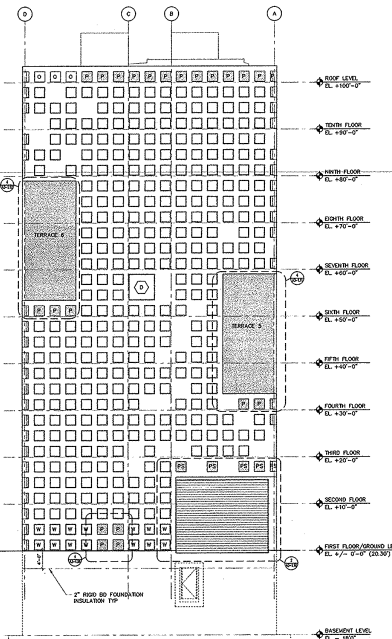
WINDOW UNIT REMIND		ELEVATION LEGEND	
<p>—WIND ON EAST SIDE TOP ON NORTH & SOUTH ELEVATION</p> <p>—WIND ON SOUTH SIDE TOP ON EAST & WEST ELEVATION</p> <p>—EXCEPTION: WIND & PANELS ON ONE SIDE PARTICULAR CORNER</p>		<p><input type="checkbox"/> OPEN - WINDOW TYPE "A" CONV. WINDOW TYPE "A"</p> <p><input type="checkbox"/> TYPICAL - NO INSET</p> <p><input type="checkbox"/> PERFORATED ALUMINUM INSET PANEL</p> <p><input type="checkbox"/> SPANIEL PANEL</p> <p><input type="checkbox"/> TYPICAL WINDOW TYPE "A" / WIND ON EAST SIDE TYPE "B"</p> <p><input type="checkbox"/> TYPICAL WINDOW TYPE "A" / WIND ON EAST SIDE TYPE C1</p>	
		<p><input checked="" type="checkbox"/> FREE ALARM ACTIVATED OPERABLE WINDOW TYPE "A"</p> <p><input checked="" type="checkbox"/> FREE ALARM ACTIVATED SOUND EXHAUST FAN TYPE "A" - ALARM LOWER</p> <p><input type="checkbox"/> FIXED WINDOW</p> <p><input type="checkbox"/> WIND ON WEST SIDE TYPE "B"</p> <p><input type="checkbox"/> TYPICAL WINDOW TYPE "A" / WIND ON EAST SIDE TYPE "B"</p> <p><input type="checkbox"/> PERFORATED ALUM. / CONV. WIND SPANIEL PANEL REMIND</p>	



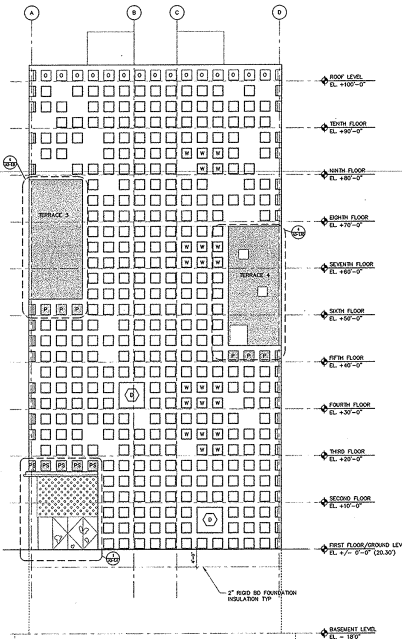
4 WEST ELEVATION PANEL PATTERN



3 EAST ELEVATION PANEL PATTERN
1/8"=1'-0"



2 WEST ELEVATION

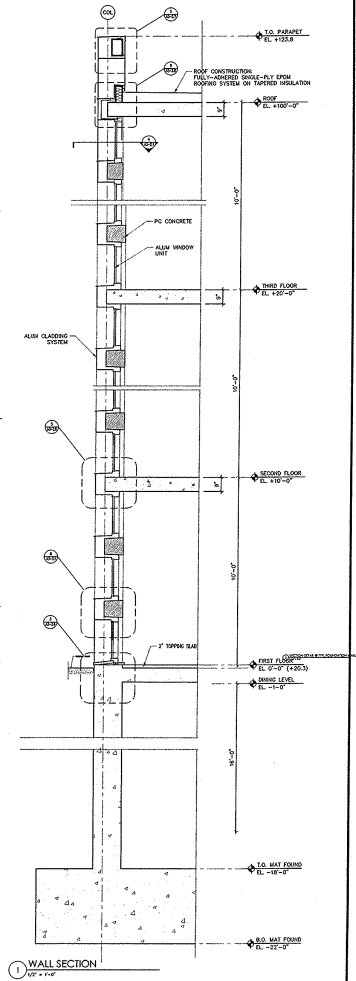
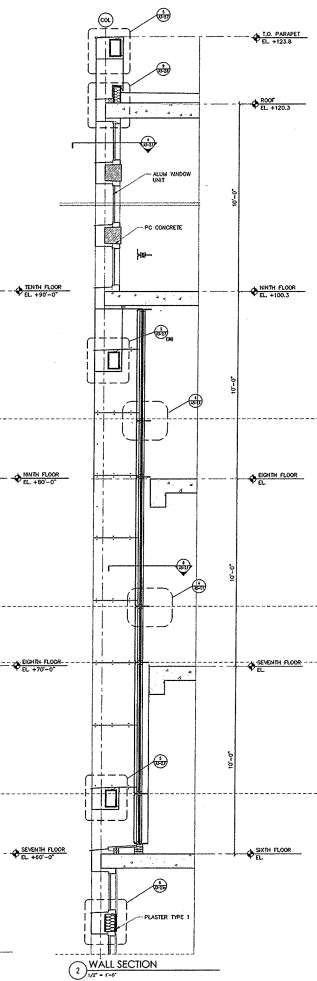
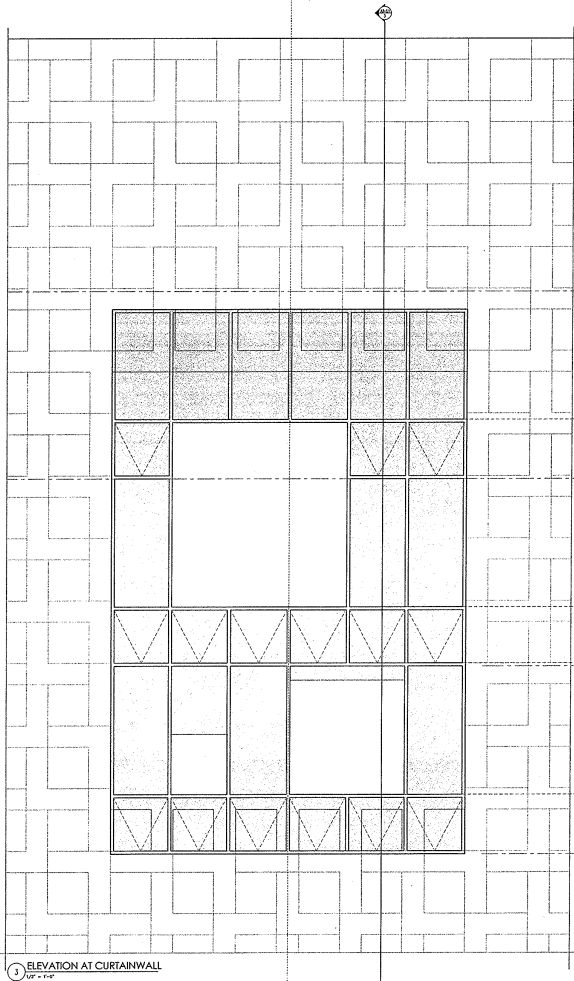
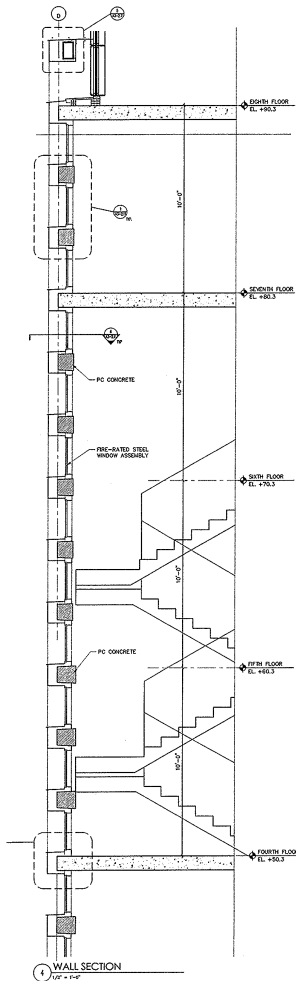


1 EAST ELEVATION
1/8"=1'-0"

NON-SHADED AREAS INDICATE
ALUM CLADDING SYSTEM 2

SHADED AREAS INDICATE
PERFORATED METAL PANELS
SYSTEM 1

[illegible]



ITAC3-101A.DWG

PREPARED BY:
JIN G. VANDERVEL
ENGINEERS, INC.
274 BROADWAY
BOSTON, MA 02210-1118
617 429-1428 FAX 617 330-7156

SCOTT CONSULTANTS
10001 SCHUYLER
AND ASSOCIATES
10001 SCHUYLER
BOSTON, MA 02210-1118
617 429-1428 FAX 617 330-7156

FOOD SERVICE CONSULTANTS
CONVULTE, INC.
38 WASHINGTON STREET, ROOM 220
BOSTON, MA 02111-1118
617 330-7156 FAX 617 330-7156

MEP ENGINEER
CIVE ASSOC.
& PARTNERS
10001 SCHUYLER
BOSTON, MA 02210-1118
617 330-7156 FAX 617 330-7156

ADVOCATE STRUCTURAL ENGINEER
SHAWDON QUINN
& ASSOCIATES, INC.
200 WASHINGTON STREET
BOSTON, MA 02111-1118
617 330-7156 FAX 617 330-7156

STRUCTURAL ENGINEER
GUY HORDEN
& ASSOCIATES LLP
10001 SCHUYLER
BOSTON, MA 02210-1118
617 330-7156 FAX 617 330-7156

CIVIL ENGINEER
SEA CONSULTANTS, INC.
10001 SCHUYLER
BOSTON, MA 02210-1118
617 330-7156 FAX 617 330-7156

SUPPLIER
CULLEN
ENGINEERING CO.
10001 SCHUYLER
BOSTON, MA 02210-1118
617 330-7156 FAX 617 330-7156

ASSOCIATE ARCHITECT
PERRY DEAN ROGERS
& ASSOCIATES LLP
10001 SCHUYLER
BOSTON, MA 02210-1118
617 330-7156 FAX 617 330-7156

ARCHITECT
SEVEN HILL ARCHITECTS
10001 SCHUYLER
BOSTON, MA 02210-1118
617 330-7156 FAX 617 330-7156

MASSACHUSETTS INSTITUTE OF TECHNOLOGY
UNDERGRADUATE RESIDENCE 2001
BUILDING MAP
229 VASSAR STREET
CAMBRIDGE, MA 02139

DATE: 10.16.00
SCALE: 3/16
SHEET: 3972
WALL SECTIONS & PART, ELEVATIONS
A3 1.1A