

2001 ASME Boiler and Pressure Vessel Code

Section I Rules for construction of power boilers

Section II Materials and Specifications

- Part A Ferrous materials specification
- Part B Non-ferrous materials specifications
- Part C Specifications for welding rods, electrodes, and filler metals
- Part D Properties

Section III Rules for construction of nuclear power plant components¹

Subsection NCA: General requirements for Division 1 and Division 2

Division 1 Steel components (vessel, storage tanks, pumps, piping systems, valves, core support structures, and supports for use at NPP)

Subsection NB: Class 1 components (within the primary pressure boundary)

Subsection NC: Class 2 components

Subsection ND: Class 3 components

Subsection NE: Class MC components

Subsection NF: Supports

Subsection NG: Core support structures

Subsection NH: Class 1 components in elevated temperature service

Division 2 Concrete reactor vessels and concrete containment vessels

Division 3 Spent fuel storage canisters² and spent fuel transportation containment vessels and their construction

Section IIV: Guidelines for care of power boilers

Section IIV: Rules for construction of pressure vessels

Division 1 Steel components (vessel, storage tanks, pumps, piping systems, valves, core support structures, and supports for use at NPP)

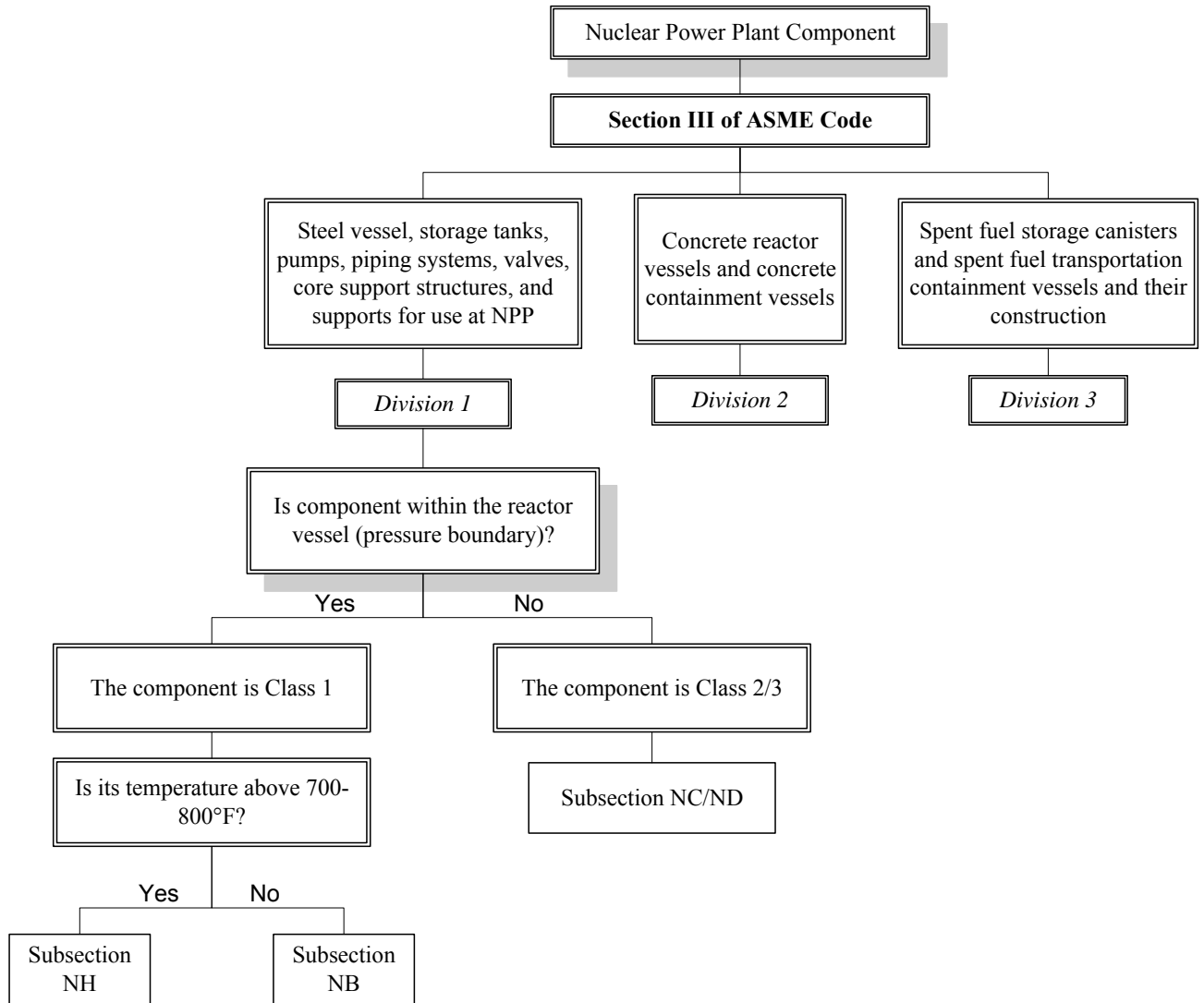
Division 2 Alternative rules

Division 3 Alternative rules for construction of high pressure vessels

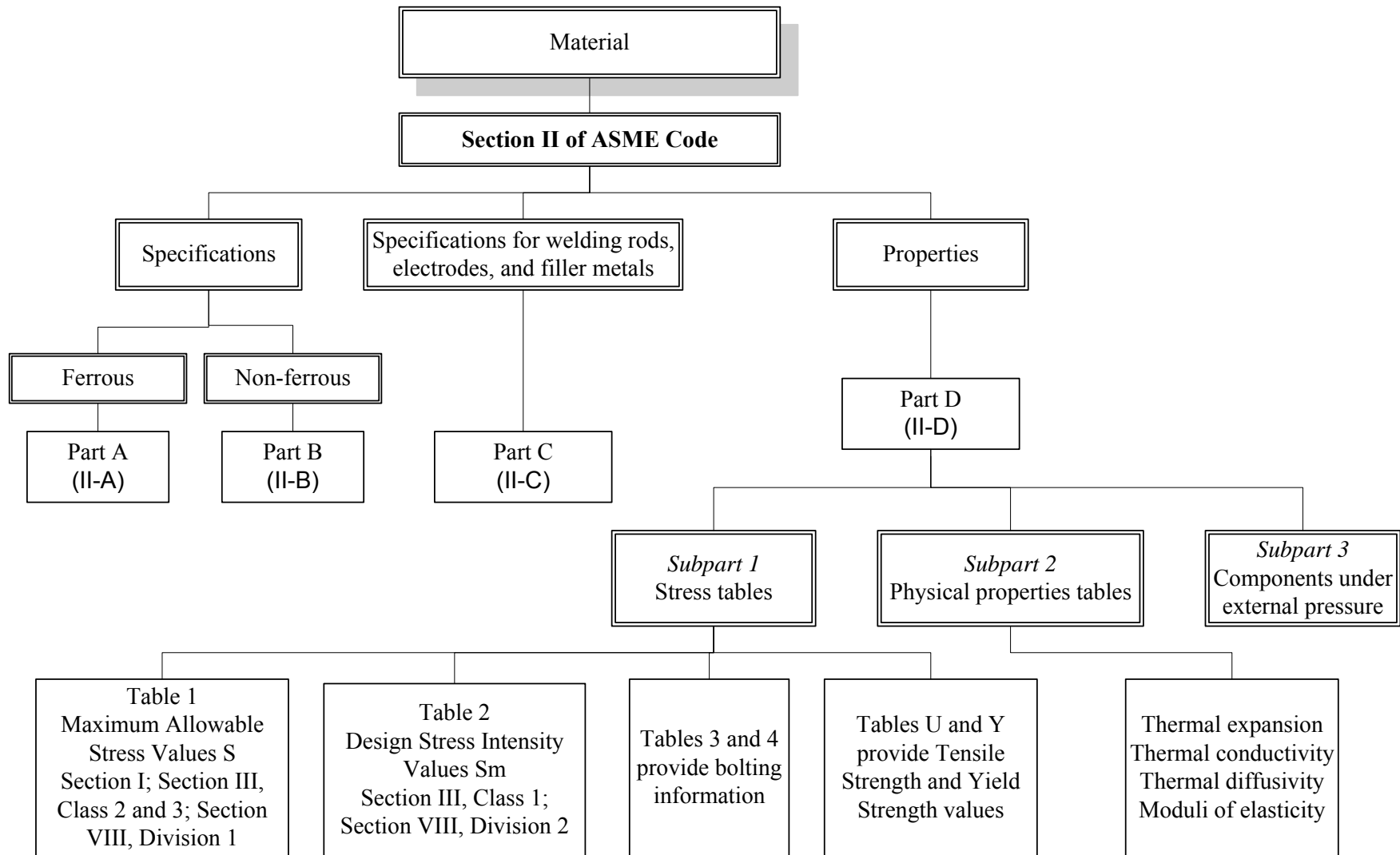
¹ limited to new constructions

² not published yet

How to go around the ASME code:



- Subsection NH contains four most-commonly used materials: 304SS, 316SS, 21/4Cr-1Mo, and alloy 800H.
- Division 1 also contains rules for supports, core supports, valves, etc. (not depicted on the diagram)



MIT OpenCourseWare
<http://ocw.mit.edu>

22.312 Engineering of Nuclear Reactors
Fall 2015

For information about citing these materials or our Terms of Use, visit: <http://ocw.mit.edu/terms>.