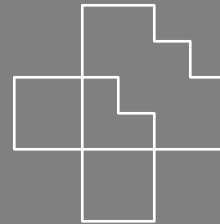
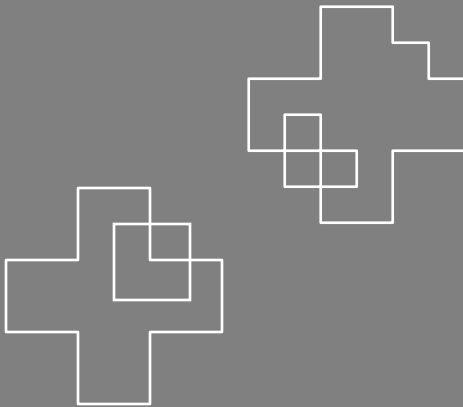
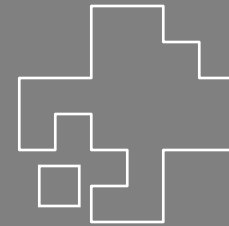


Shape Grammars



history of computation

1930s	formal theories of computation (Turing, Godel, Church, etc)
1940s	first computer <i>neural nets (McCulloch and Pitts)</i> production systems (Post)
1950s	<i>parallel computation (von Neuman)</i> <i>cellular automata (Ulam, von Neuman)</i> generative grammars (Chomsky)
1960s	<i>evolutionary computation</i> pattern grammars (Fu)
1970s	shape grammars (Stiny, Gips)
1980s	<i>artificial life (Langton), self-organizing systems</i>

innovative, creative, productive, synthetic

explanatory, descriptive, interpretive, analytic

shape grammars

productive

produce designs

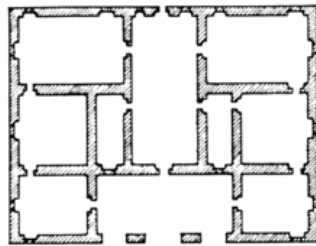
explanatory

rules describe structure of designs
dynamic (not static) description
spatial (not textual) description

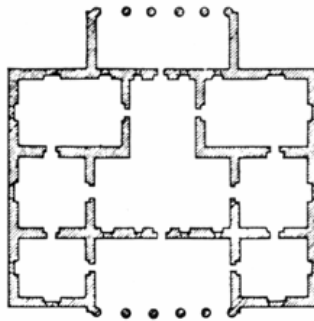
shape grammar applications

analysis

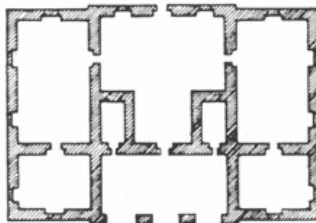
synthesis



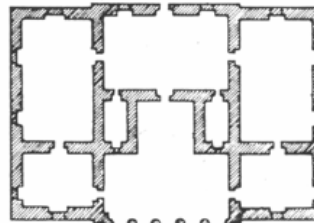
villa zeno



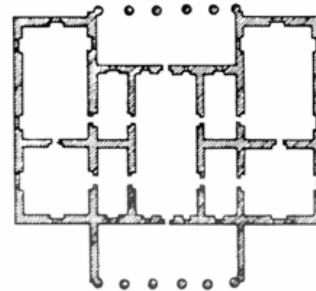
villa santa monica



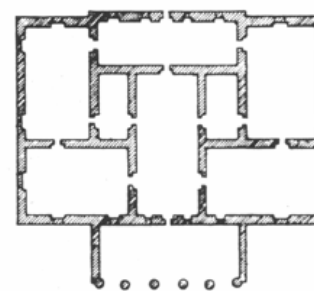
villa sarraceno



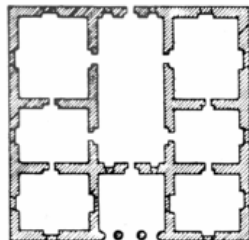
villa sepulveda



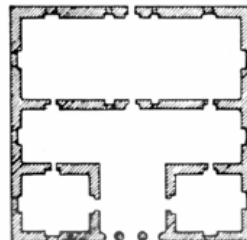
villa badoer



villa vine

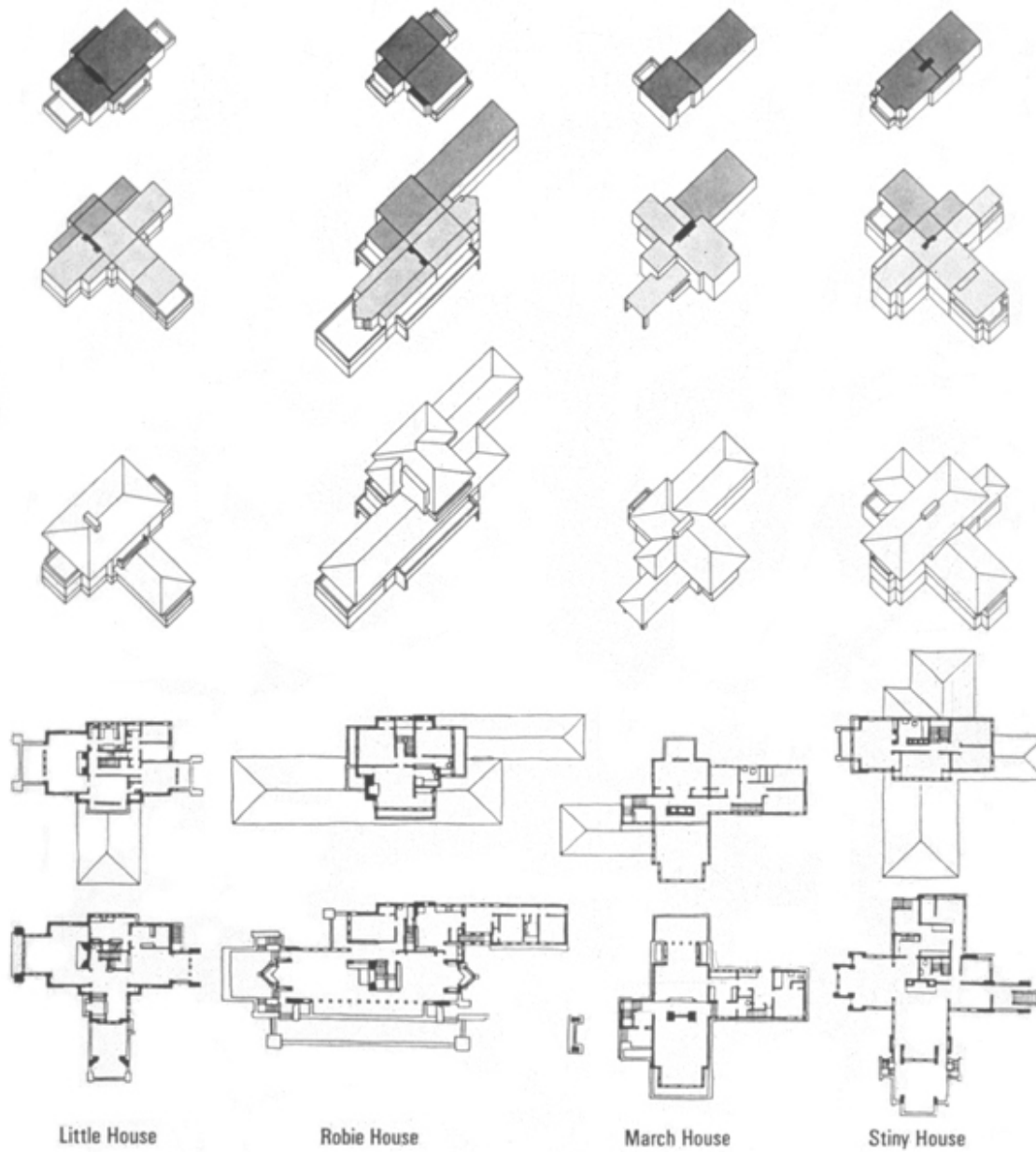


villa angarano

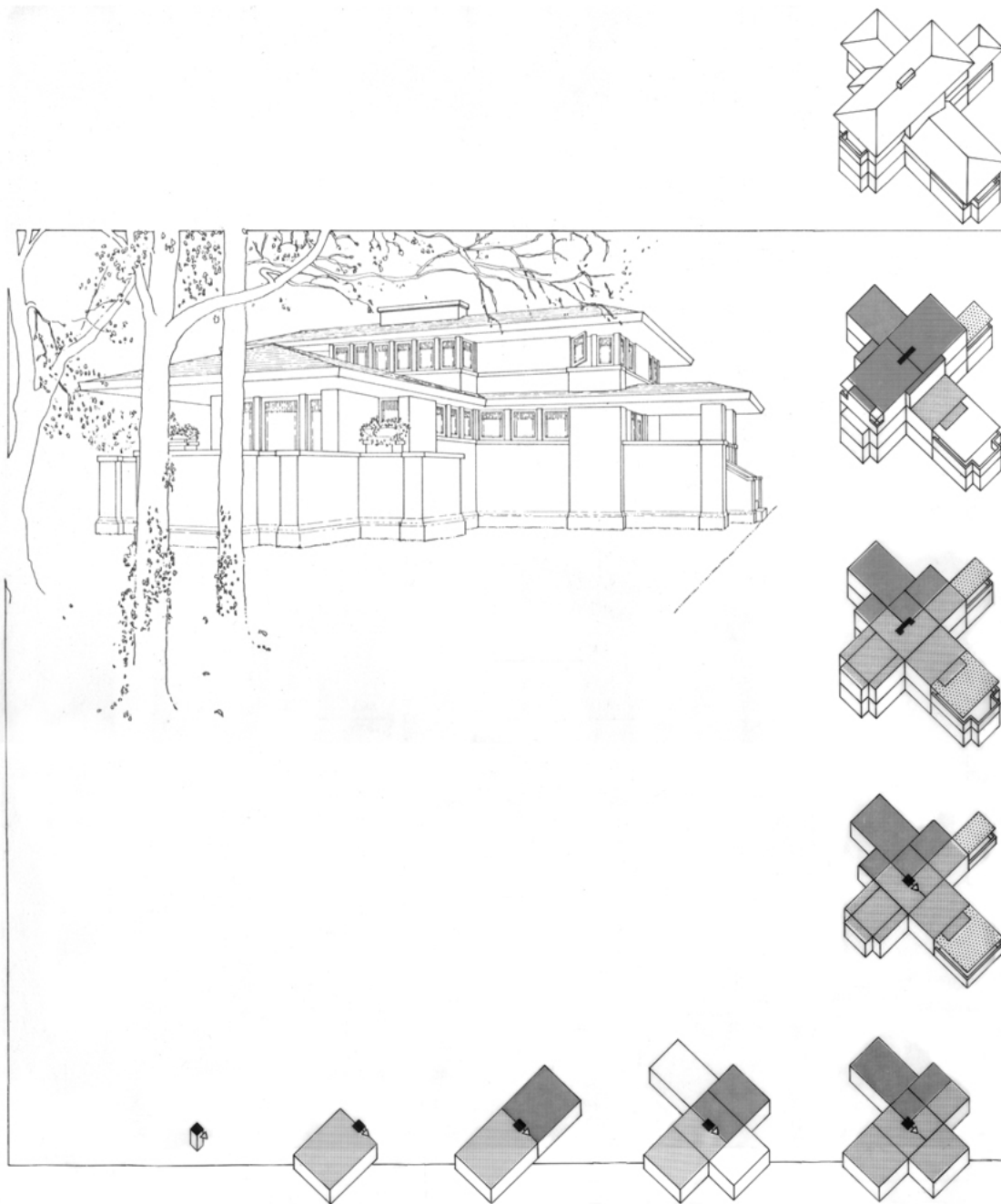


villa hollywood

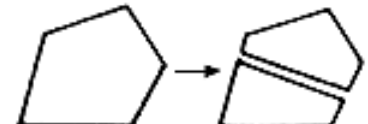
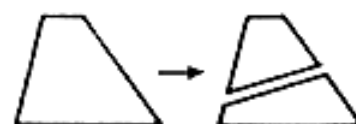
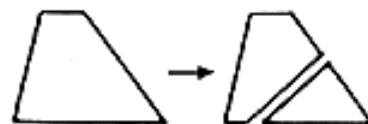
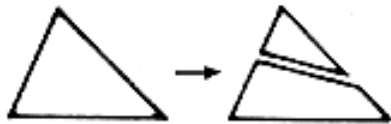
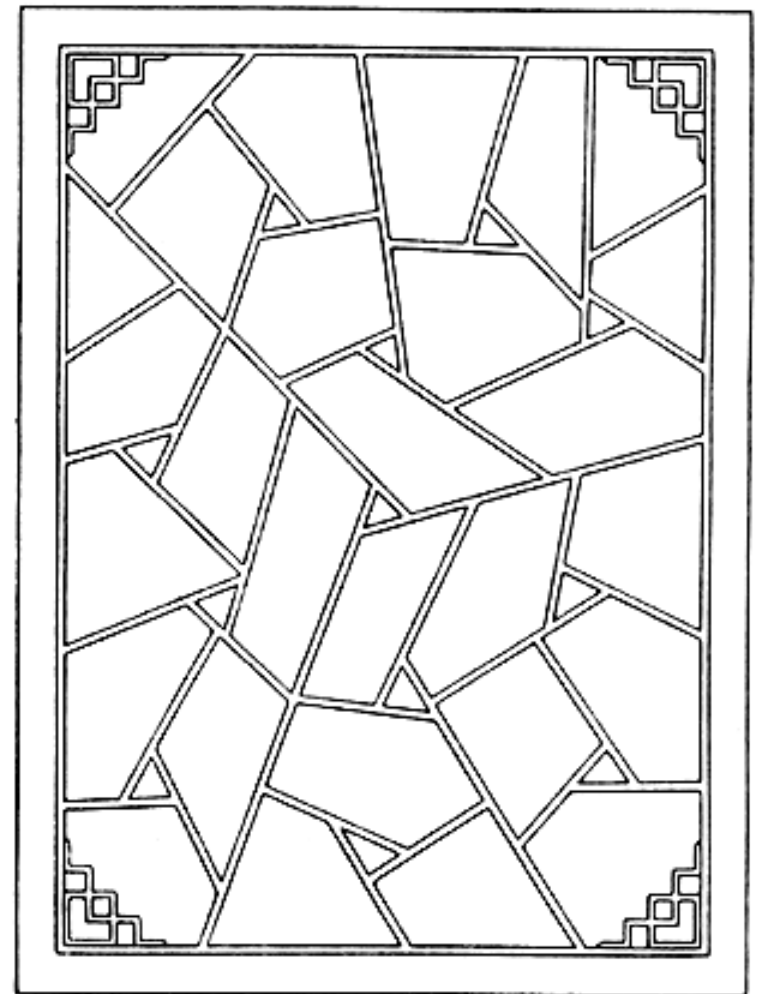
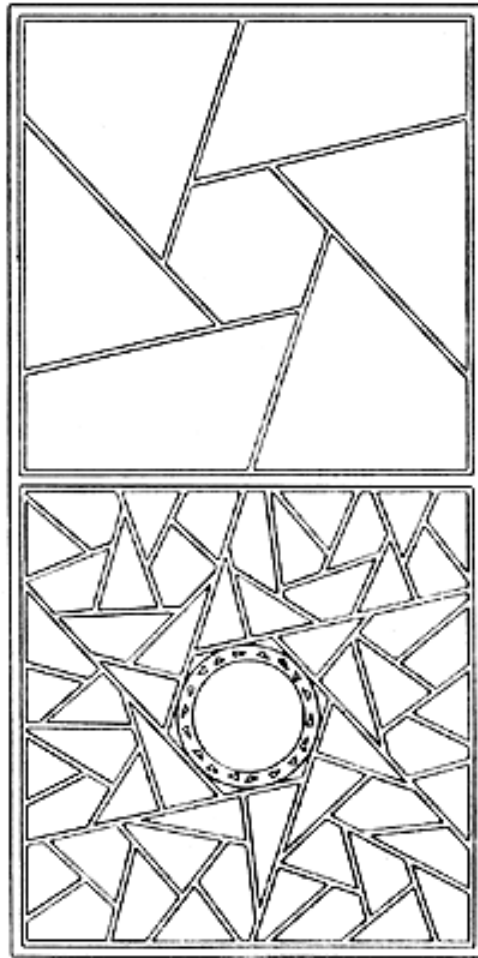
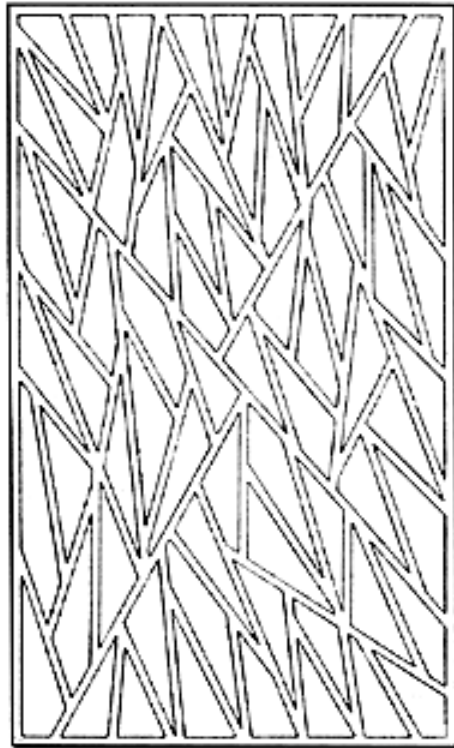
Palladian villas
(Stiny and Mitchell, 1978)



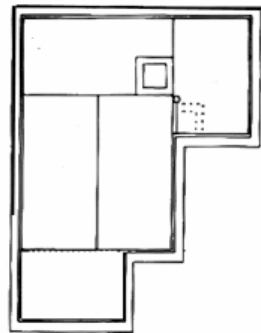
Frank Lloyd Wright prairie houses
(Koning and Eizenberg, 1981)



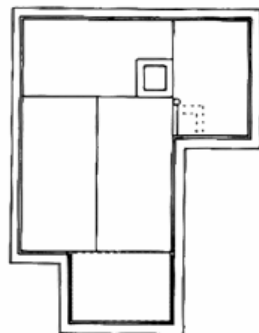
shape grammar derivation of
Frank Lloyd Wright prairie houses
(from Koning and Eizenberg, 1981)



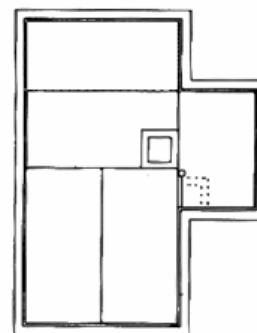
Chinese ice-ray shape grammar (Stiny, 1977)



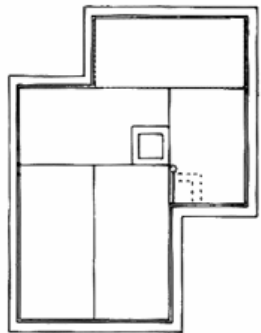
1



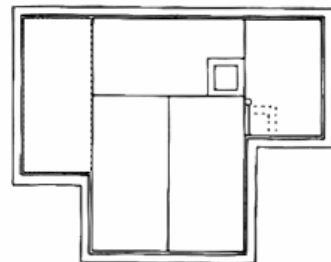
2



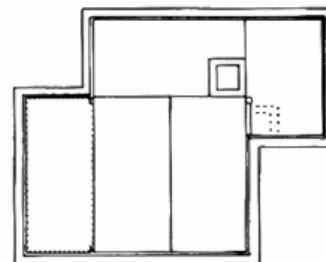
3



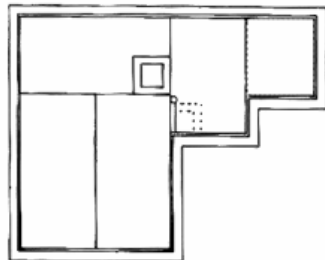
4



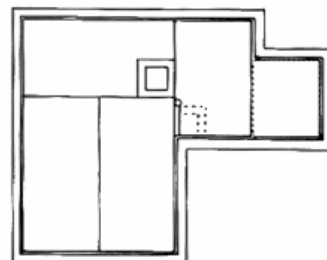
5



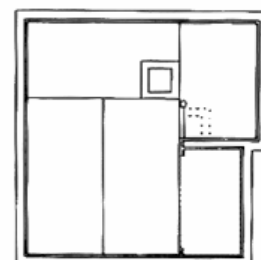
6



7

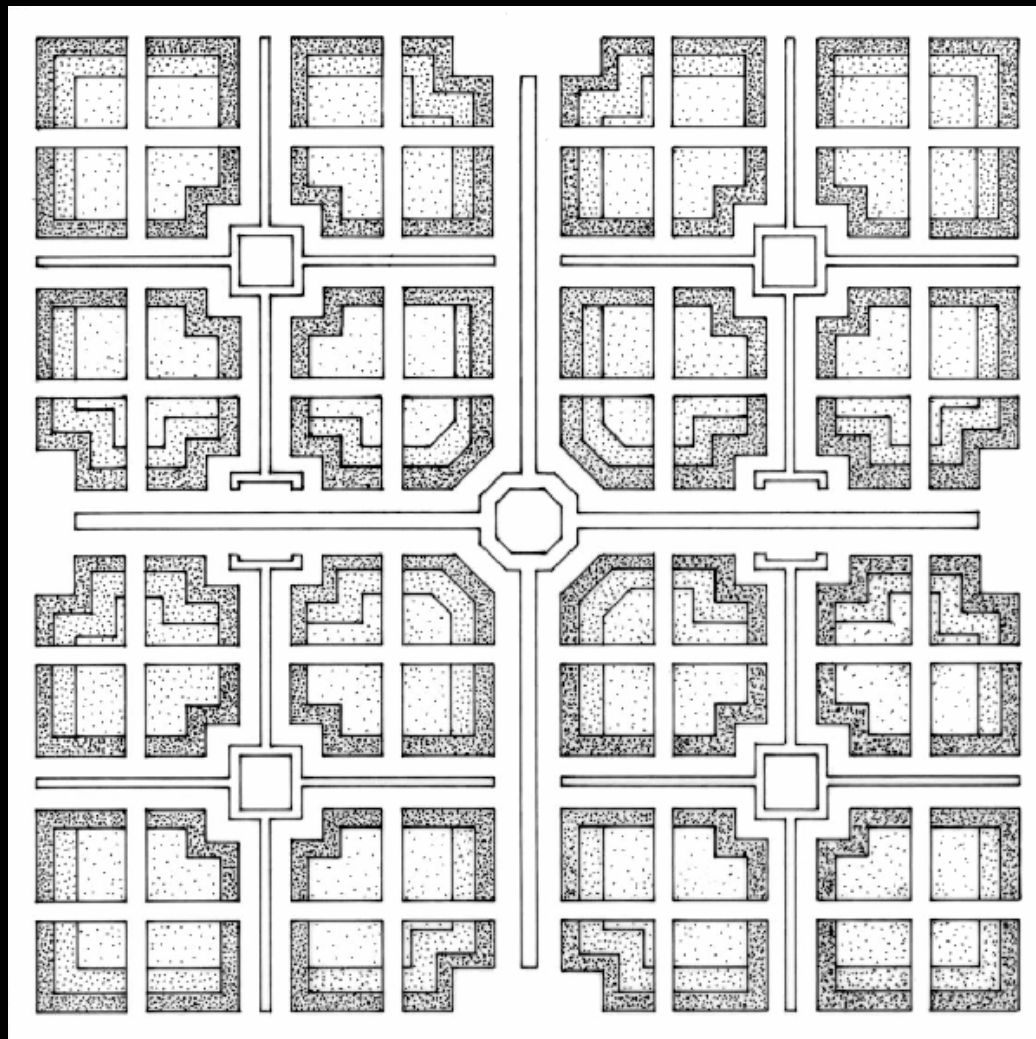


8

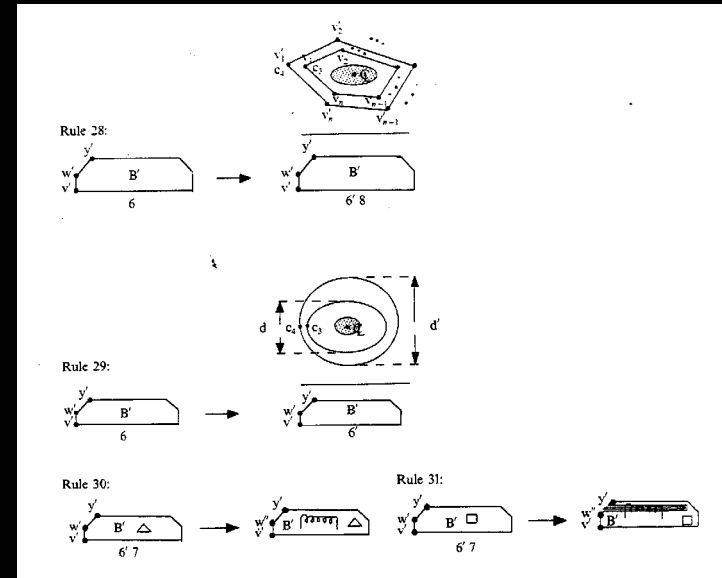
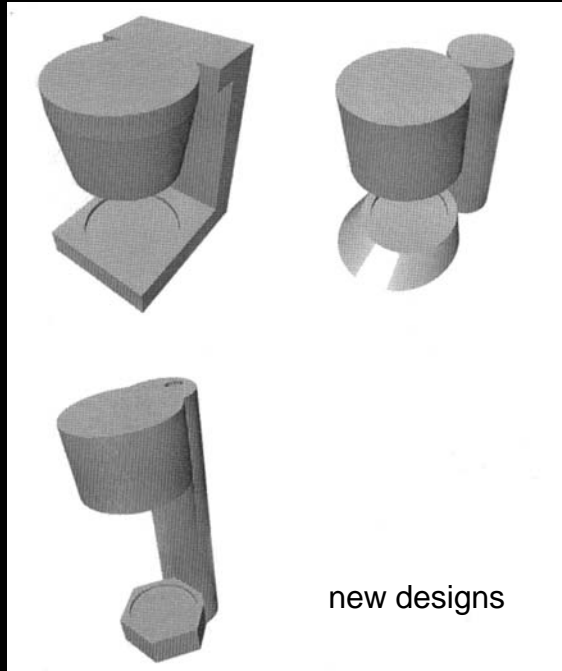
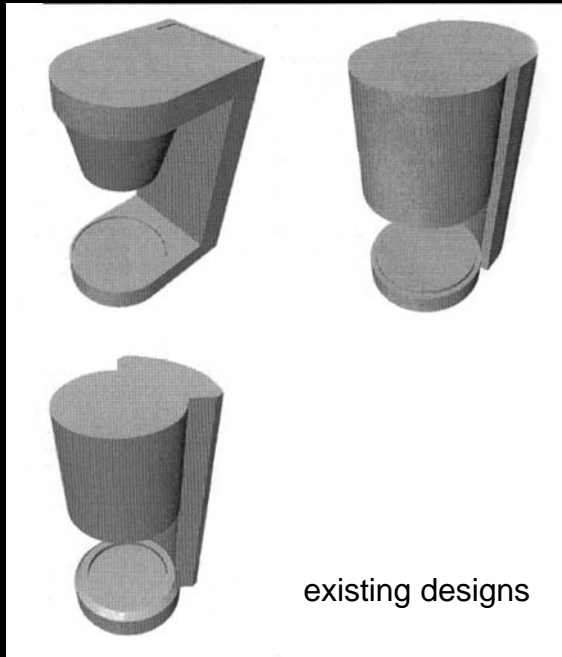


9

Japanese tearooms
(Knight, 1981)



Mughul gardens
(Stiny and Mitchell, 1980)



sample shape rules for base unit
(top and side views)

$$\text{material cost} = (\$0.84/\text{kg}) \times (0.00091 \text{ kg}/1000 \text{ mm}^3) \times (\text{part volume})$$

$$\text{tooling cost} = \text{total tooling cost} / \text{useful tool life based on the number of parts produced by that tool}$$

$$\text{base area: } A' = \Sigma A'_k + A'_n - \pi d_{\text{plate}}^2 / 4$$

sample cost expressions

coffee-maker shape grammar
(Agarwal and Cagan, 1998)

Corpus of Existing Designs - 1977 / 1997

Malagueira - Alvaro Siza Vieira

Corpus

Introduction

Designs

Layouts

Subtypes

Ab

Ac

Ad

Ae

Bb

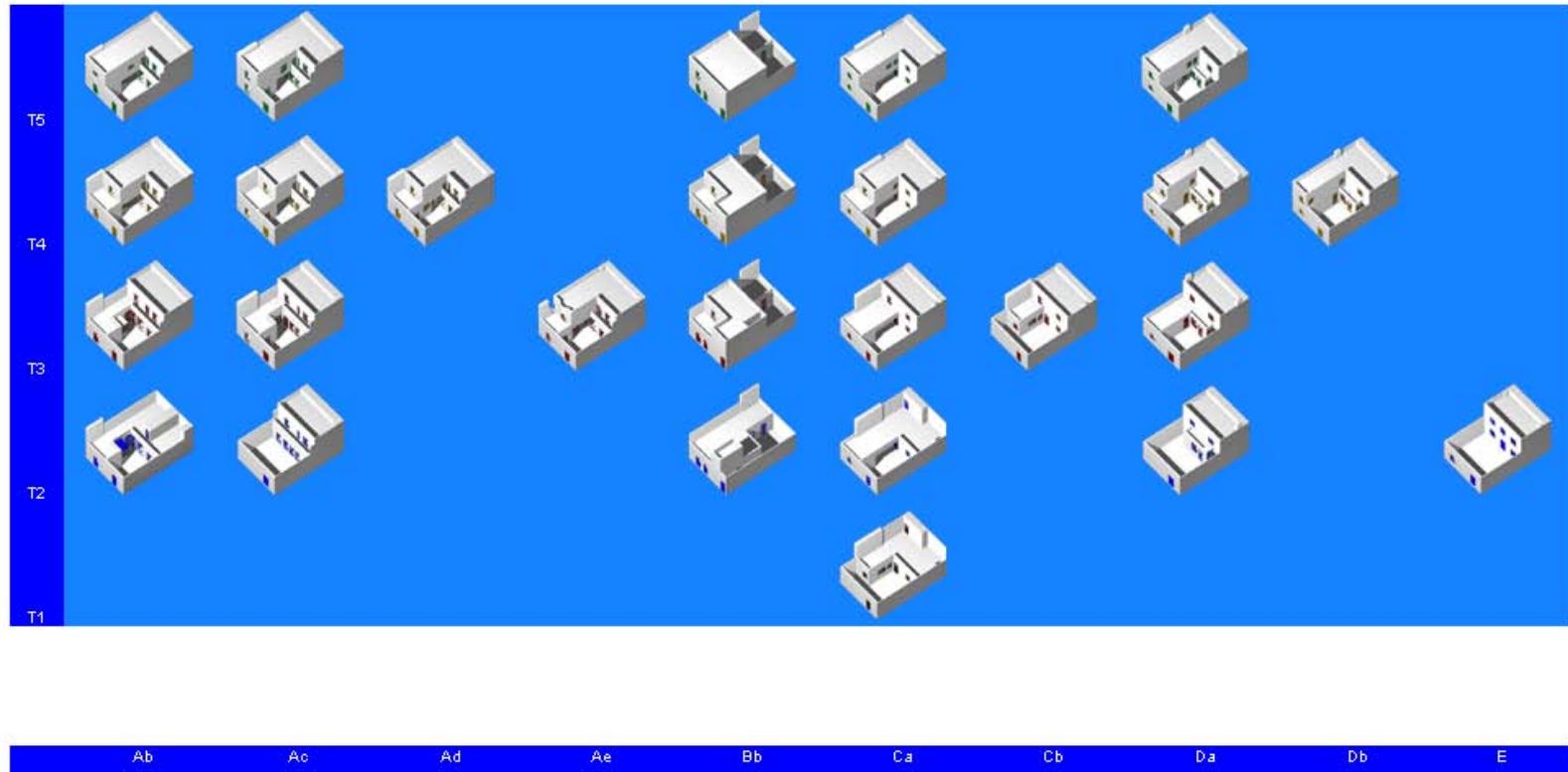
Ca

Cb

Da

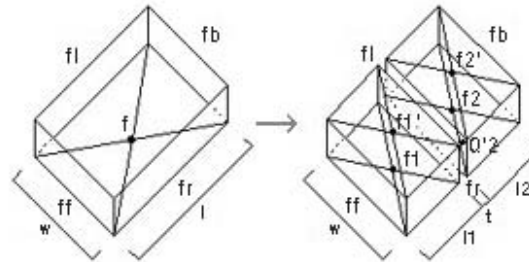
Db

E



Malagueira housing designs of Alvaro Siza (Jose Duarte)

Rule 9: dissecting the outside zone

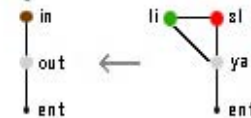


R9: $\langle F_1; f_b, f_r, f_l, li; o; Z \rangle \rightarrow$
 $\langle F_1; f_b, f_r, f_l, f_l; ya, sl; Z - \{ya, sl\} \rangle$

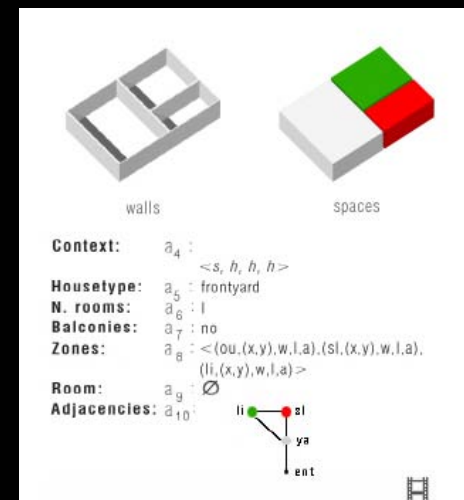
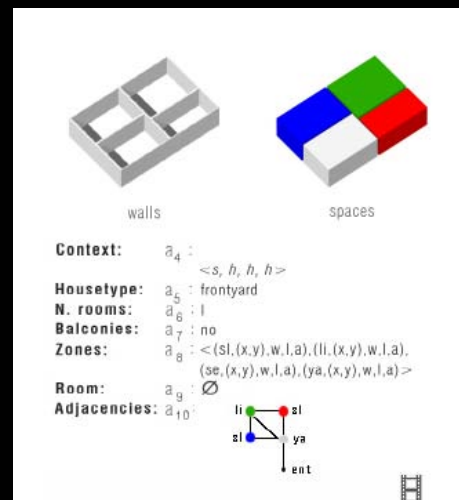
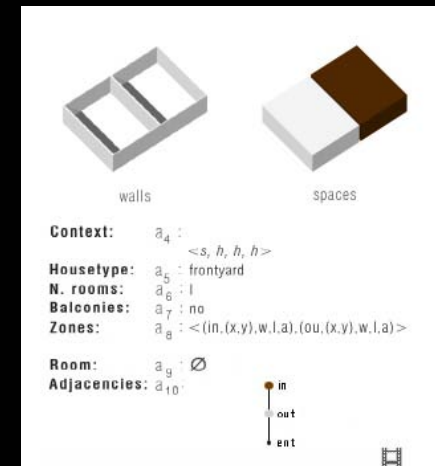
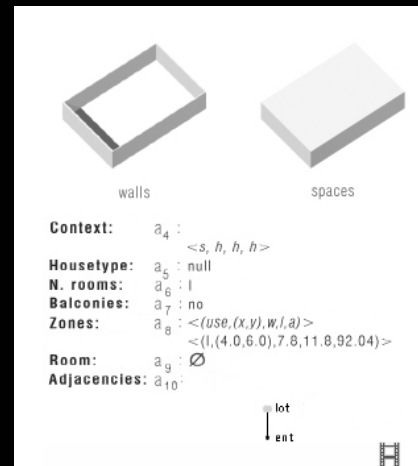
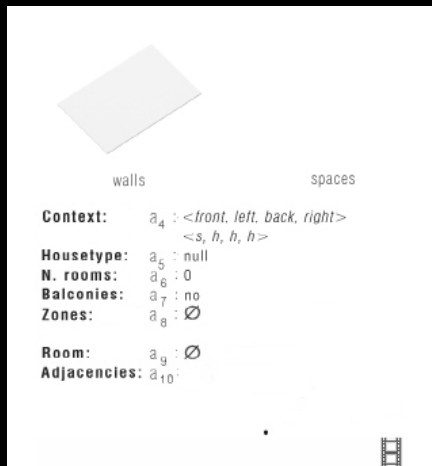
Context: $g_4 : a_4 \leftarrow a_4$
Housetype: $g_5 : a_5 \leftarrow a_5$
N. rooms: $g_6 : a_6 \leftarrow a_6$
Balconies: $g_7 : a_7 \leftarrow a_7$
Zones: $g_8 : a_8 \leftarrow a_8 \leftarrow (in, (x,y), w, l, a),$
 $+ (li, (x,y), w, l, a),$
 $+ (sl, (x,y), w, l, a),$

Room: $g_9 : a_9 \leftarrow a_9$

Adjacencies: $g_{10} :$



rule from Siza grammar



part of a computation
in Siza grammar

New Designs

Malagueira - Alvaro Siza Vieira

Introduction

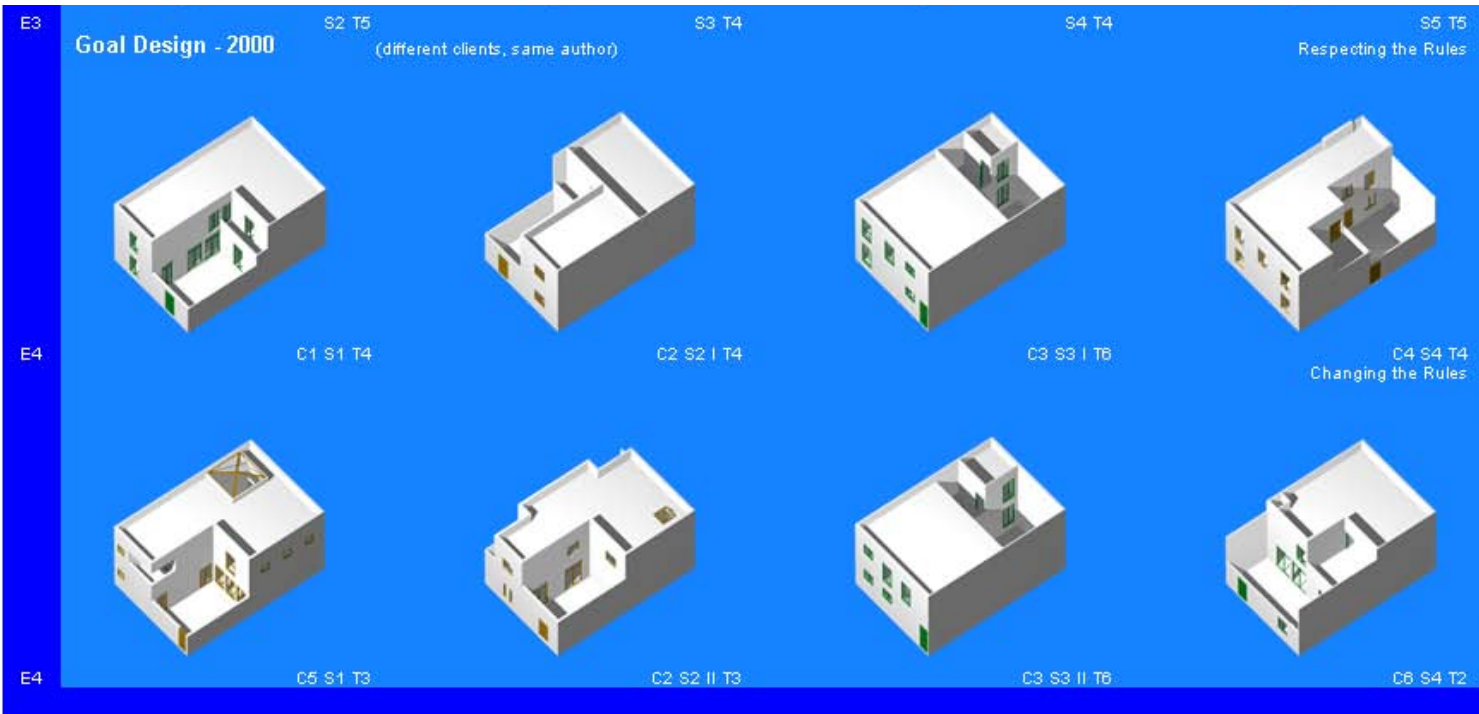
Designs

Experiment 1

Experiment 2

Experiment 3

Experiment 4



©1999
Jose P. Duarte

Plan

Corpus

Grammar

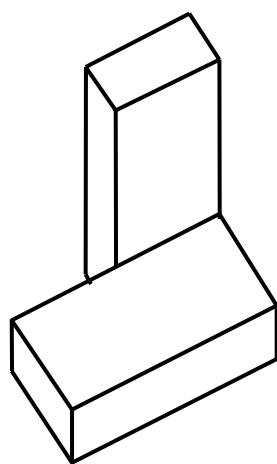
New Designs

new Malagueira houses

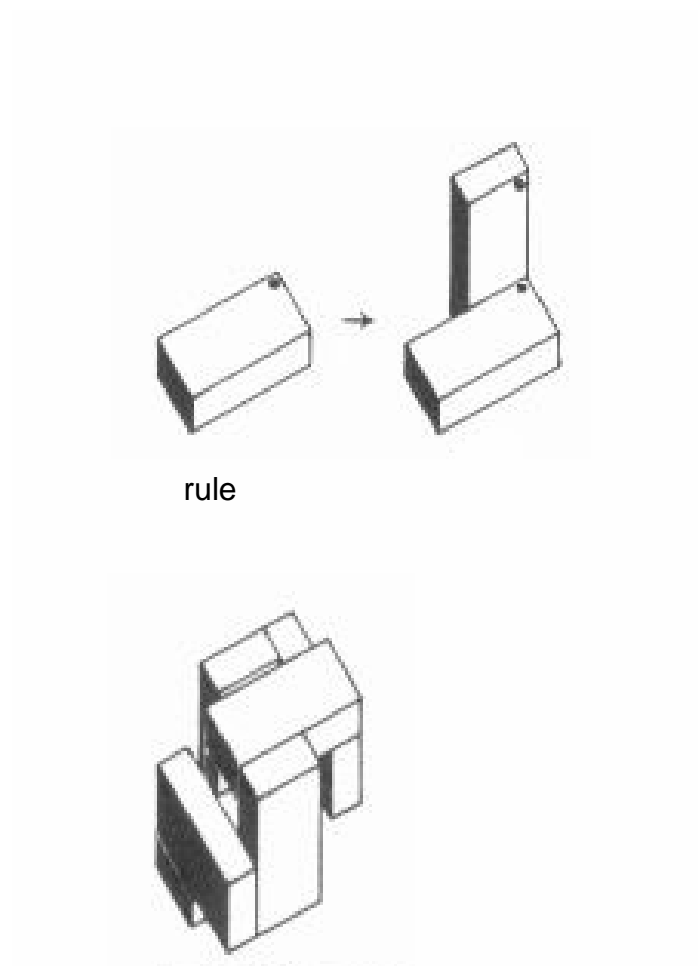
shape grammar applications

analysis

> synthesis



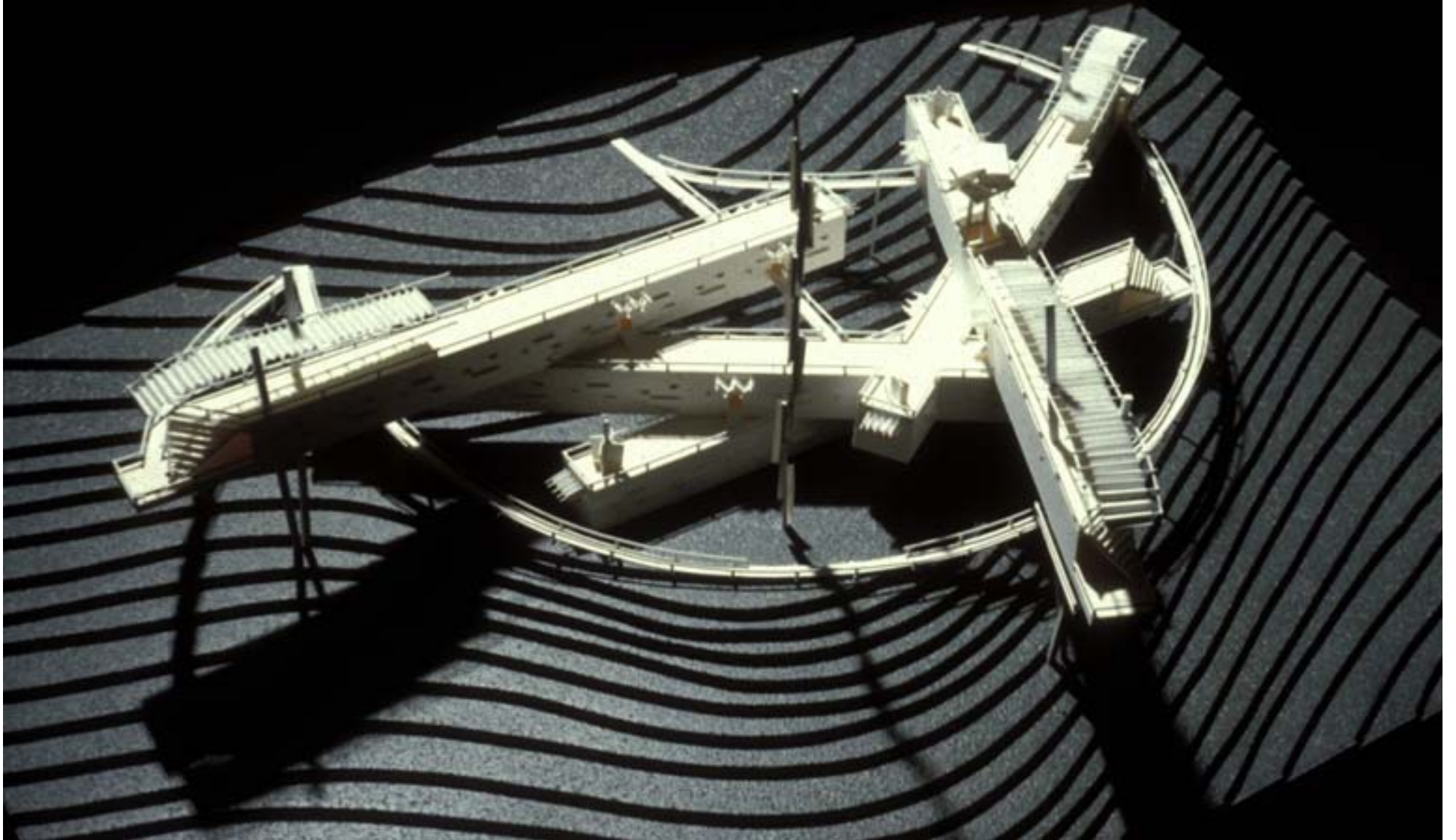
spatial relation

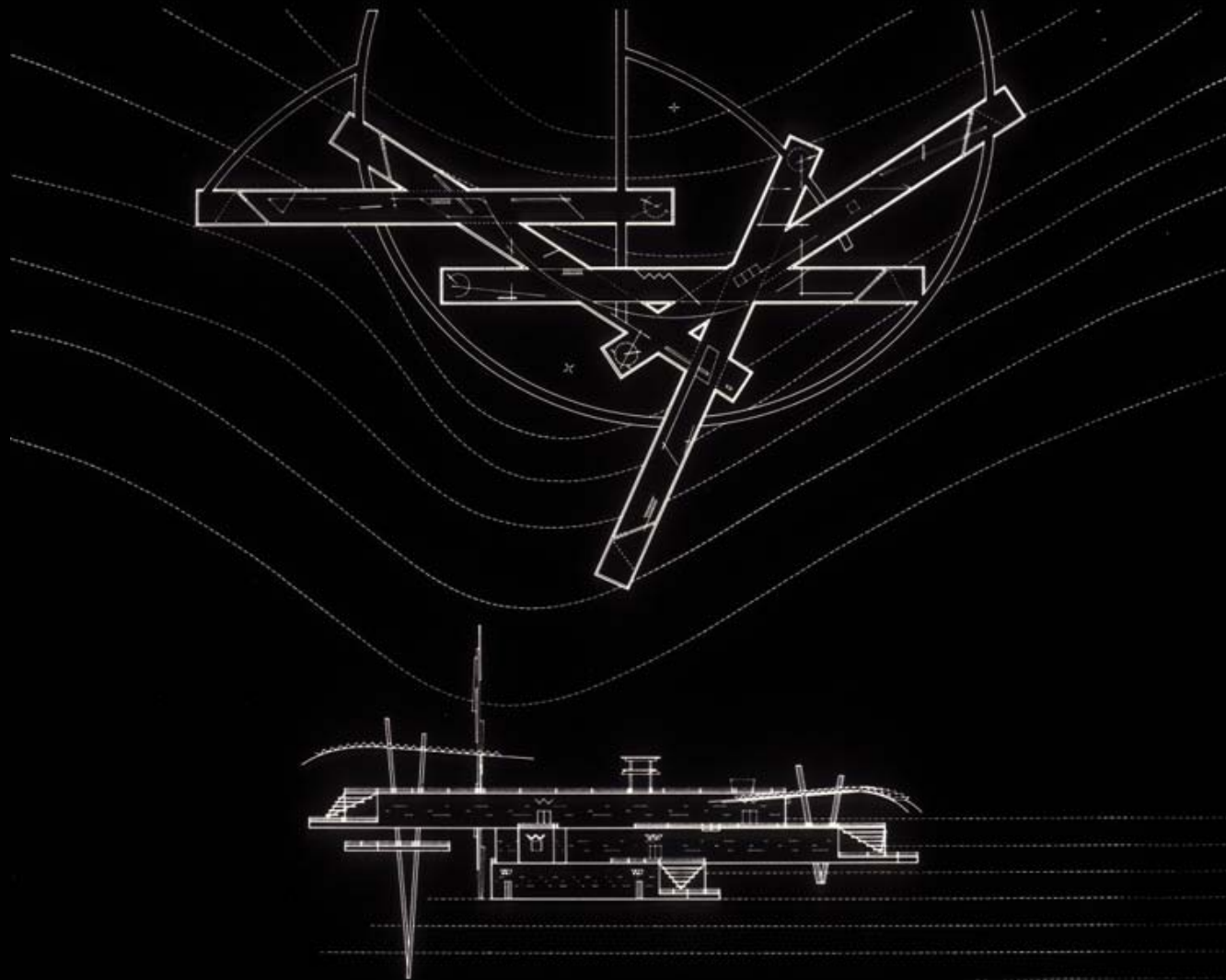


rule

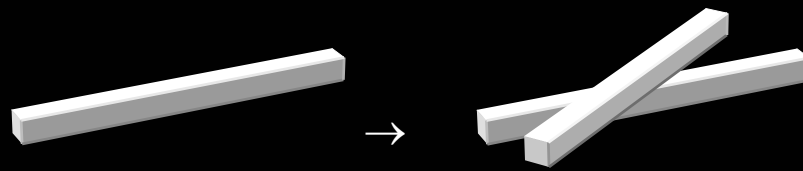
design

historical museum, San Gimignano, Italy (Randy Brown)





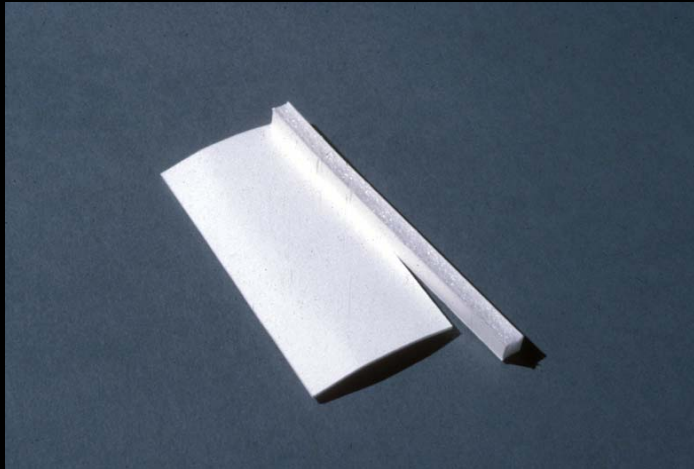
historical museum, San Gimignano, Italy (Randy Brown)



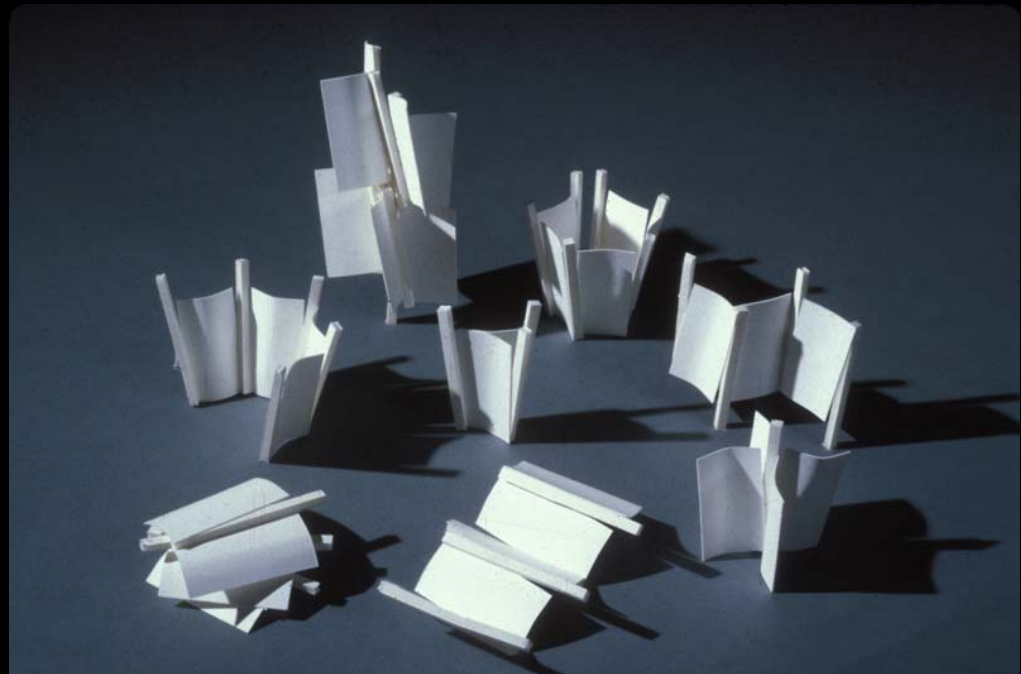
underlying rule



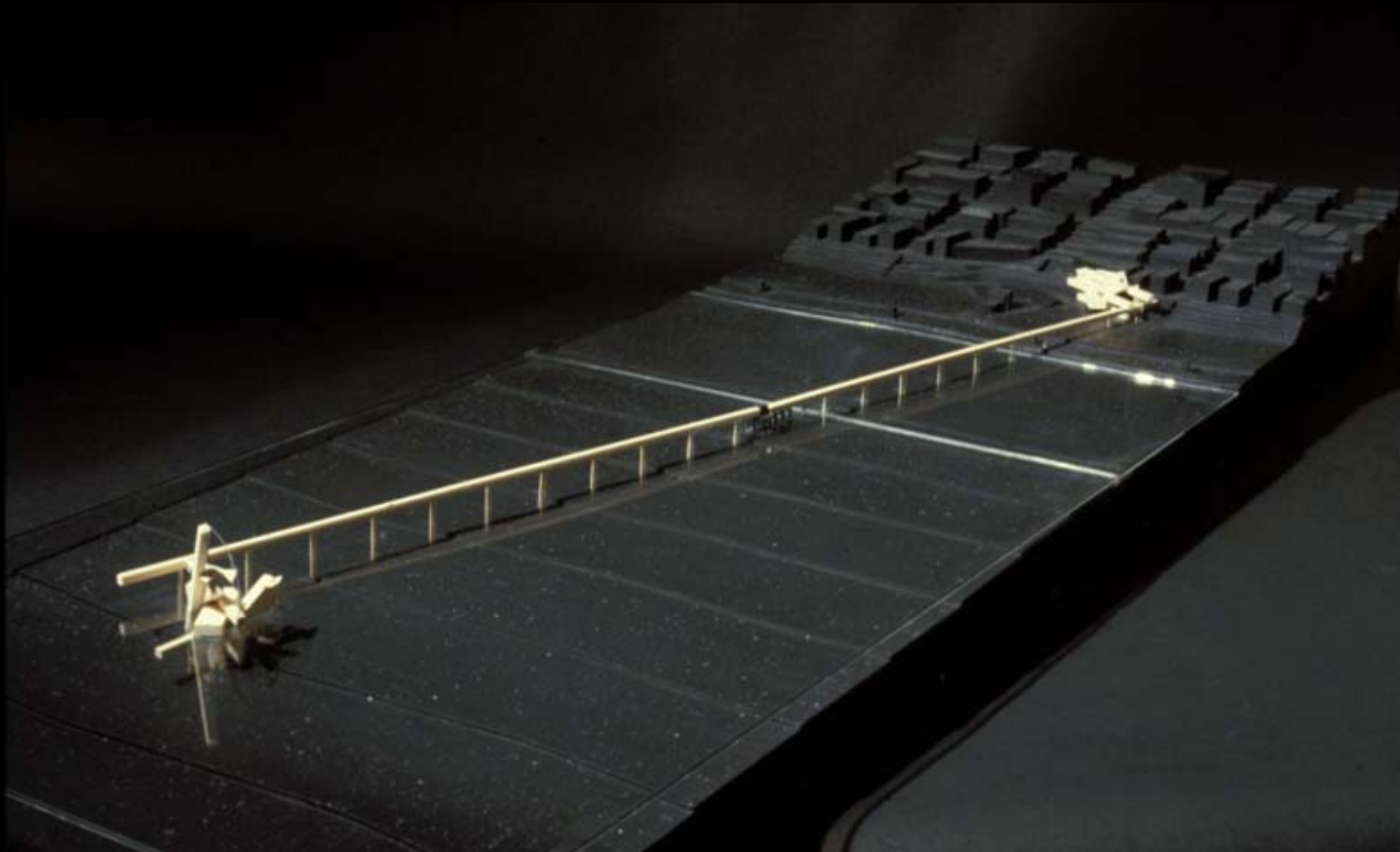
massing studies



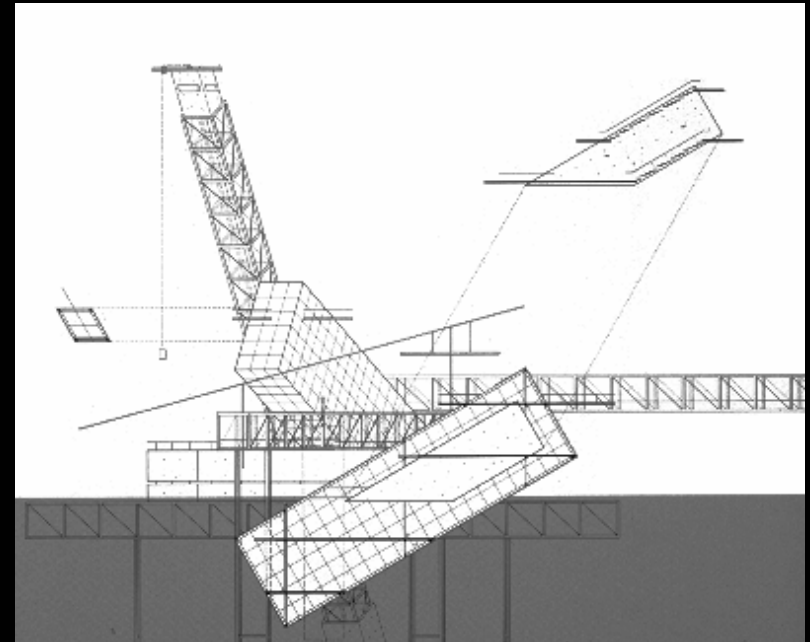
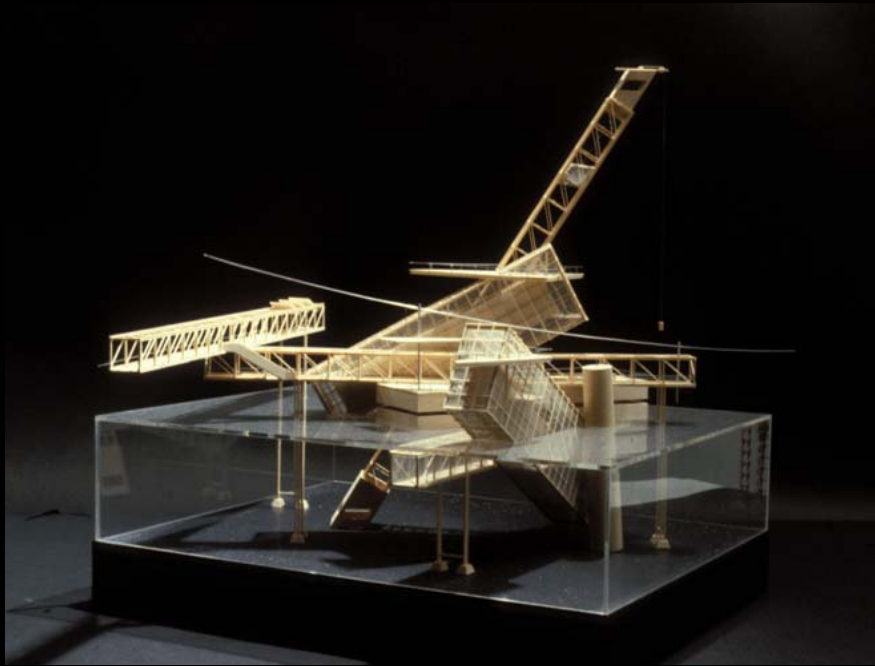
spatial relation



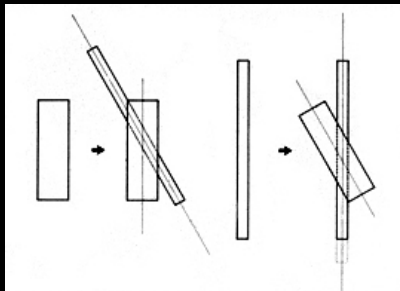
generated designs



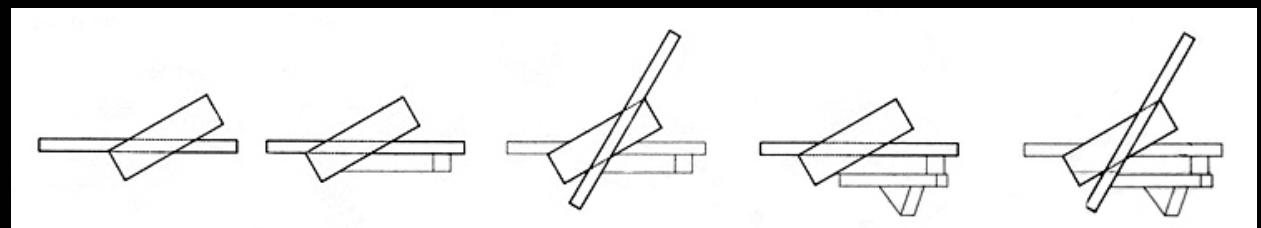
pier, ocean observatory and education facility, Manhattan Beach, CA
(Randy Brown)



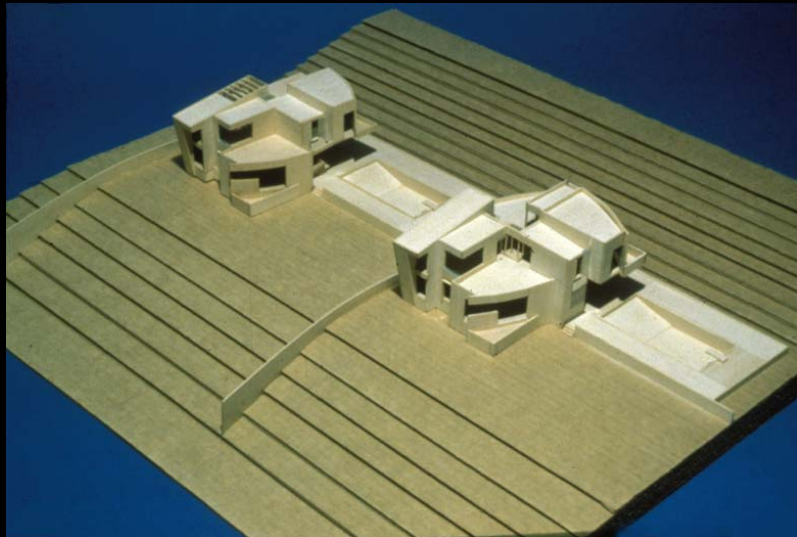
ocean building



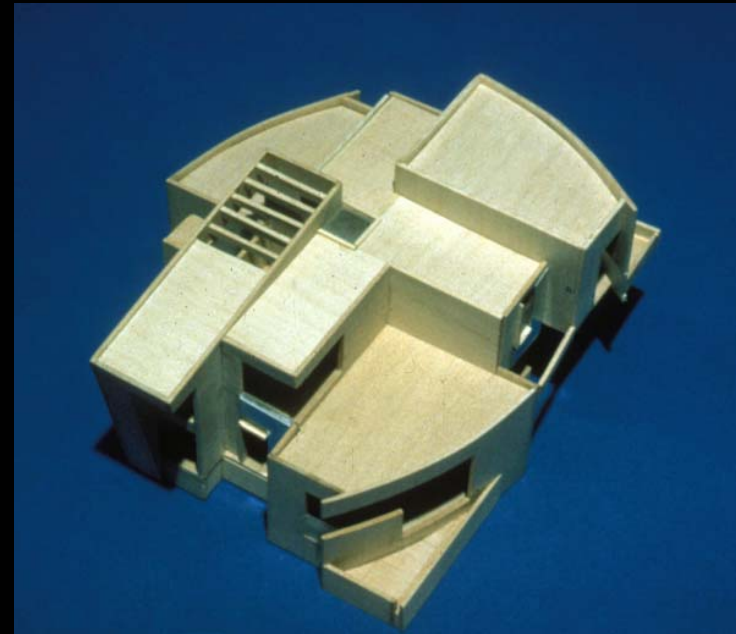
rules

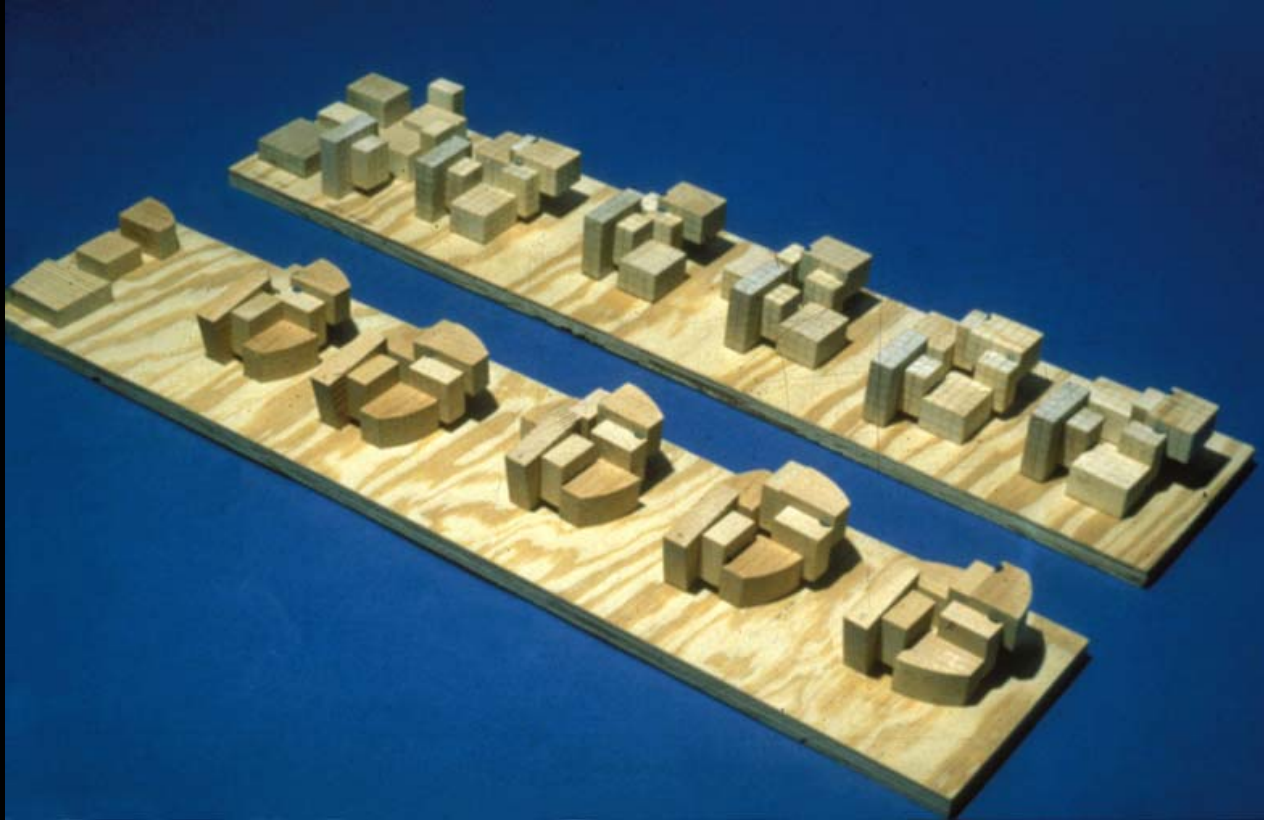


derivation



courtyard houses, Malibu, CA
(Jin-Ho Park)

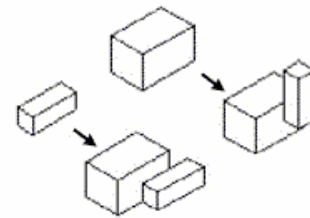




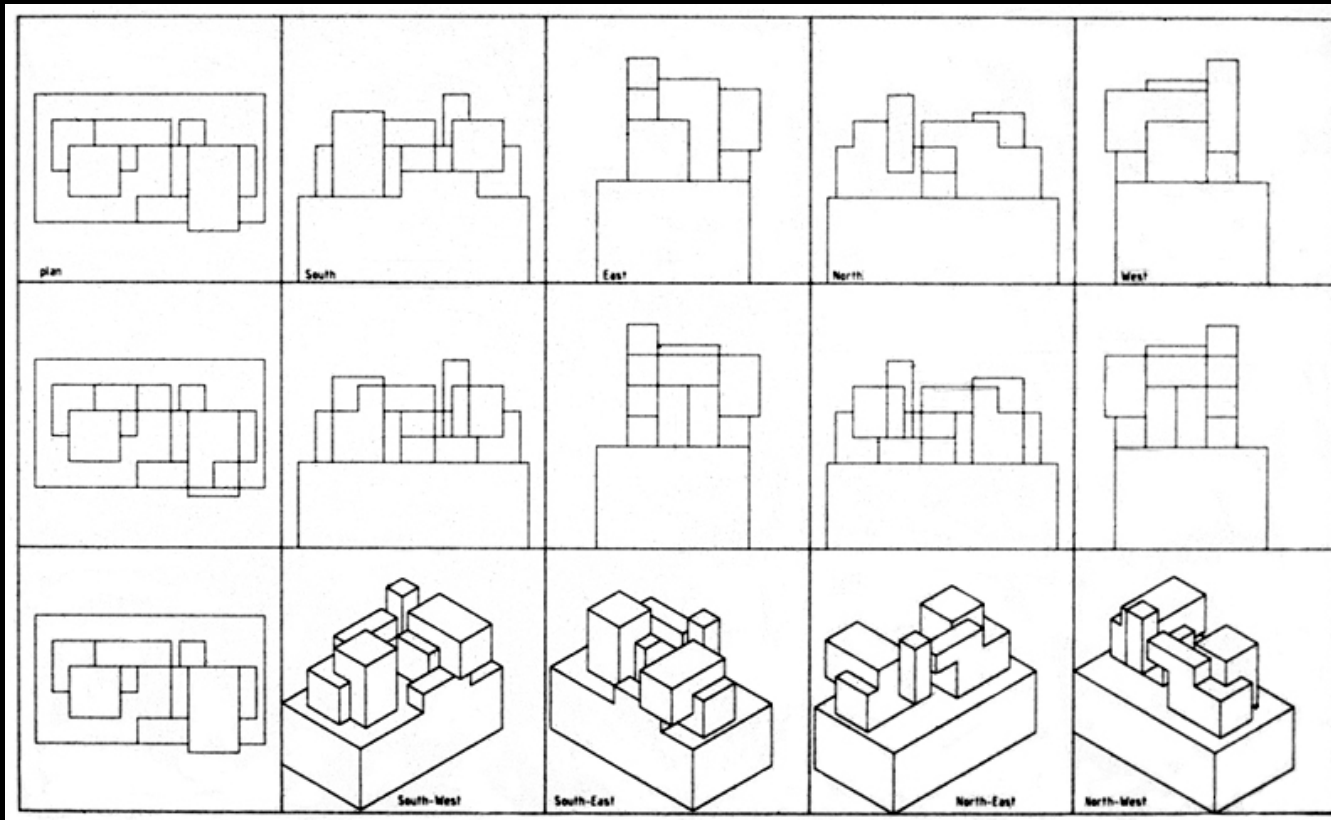
courtyard house possibilities



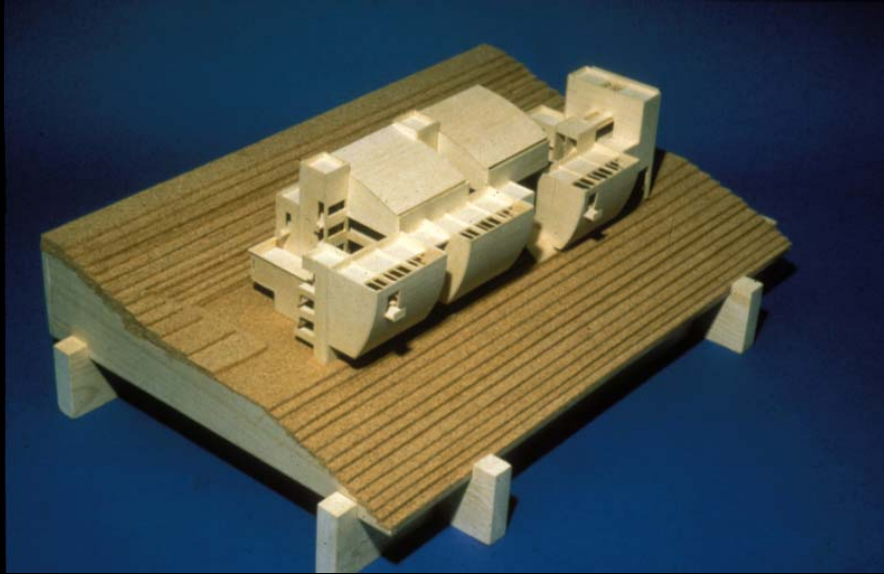
apartment house complex
(Murat Sanal)



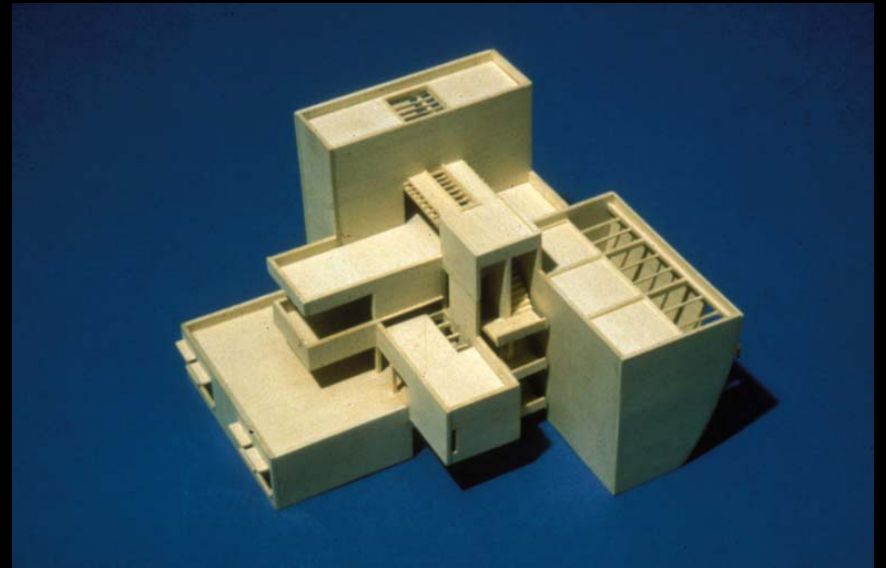
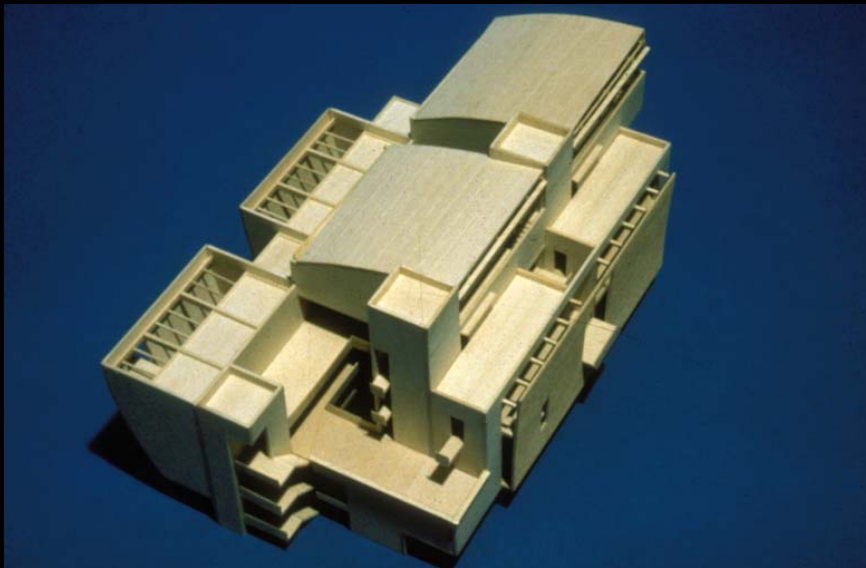
underlying shape rules

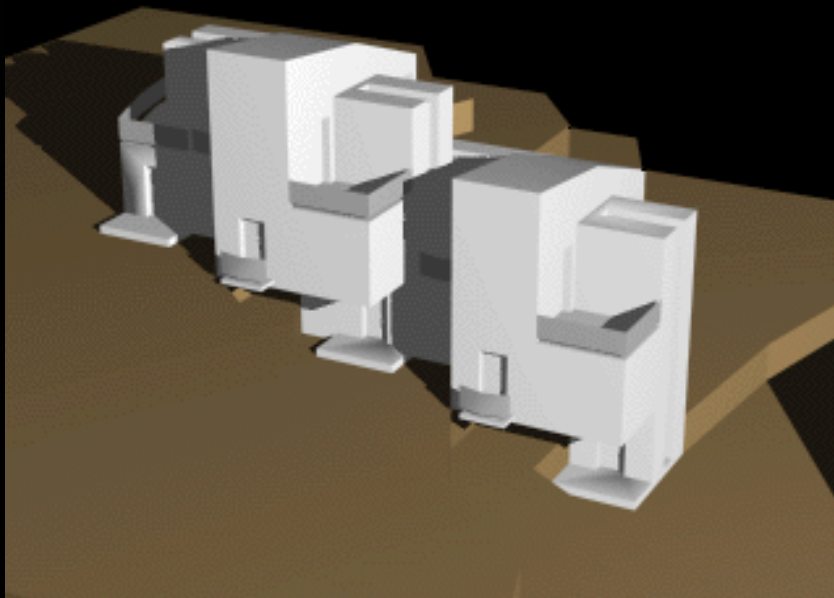
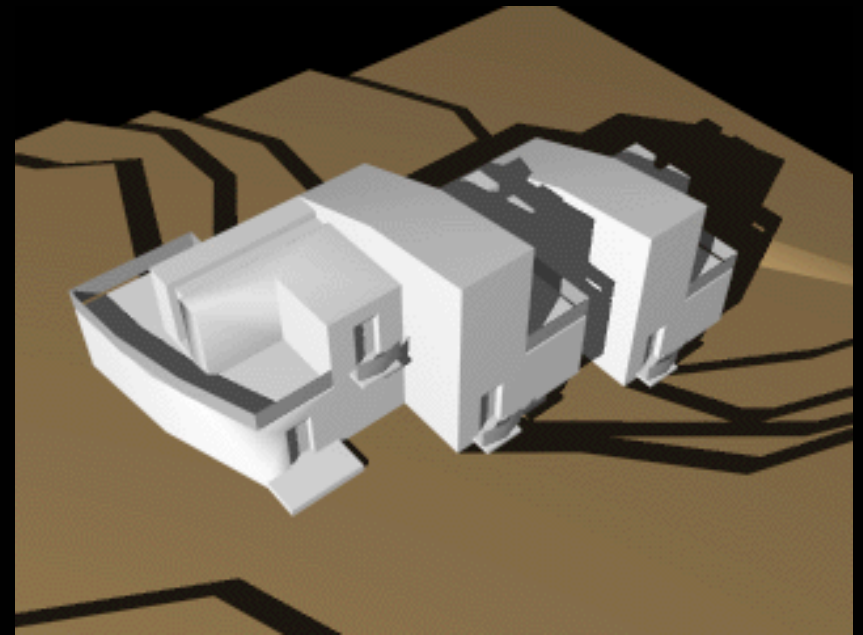
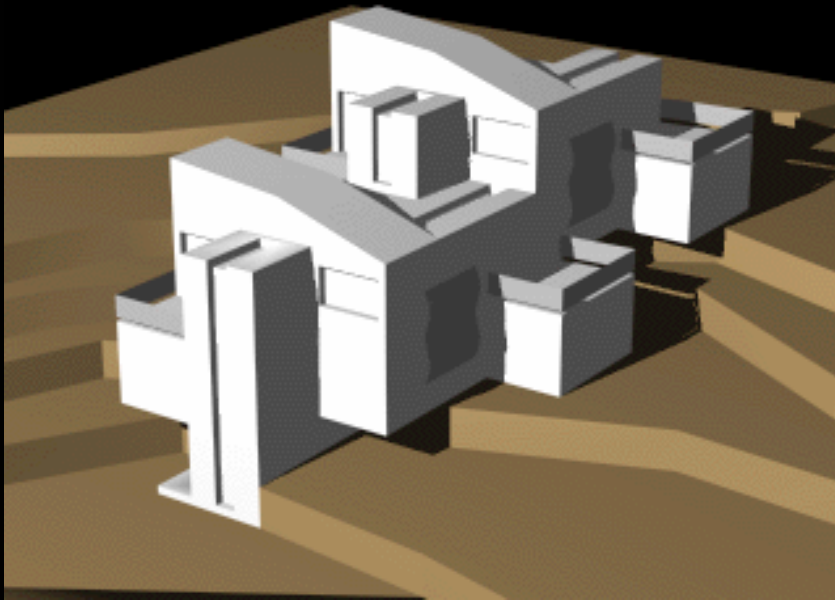


variations

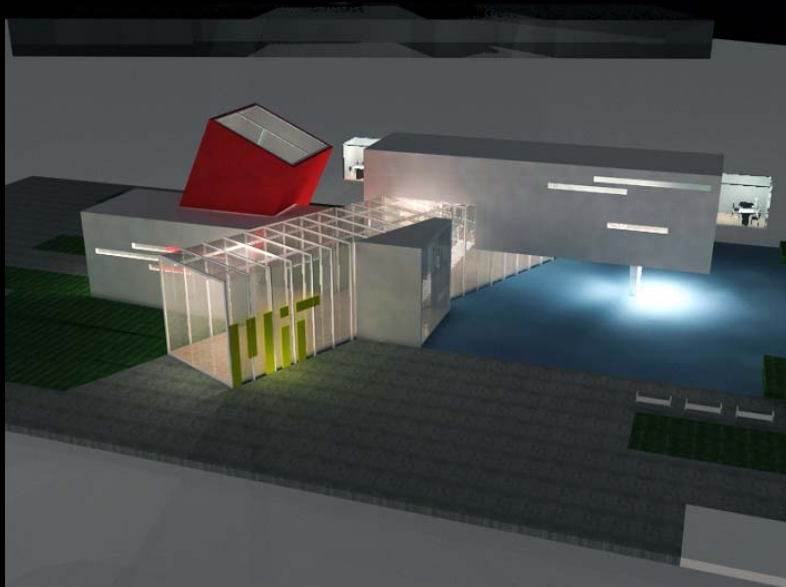
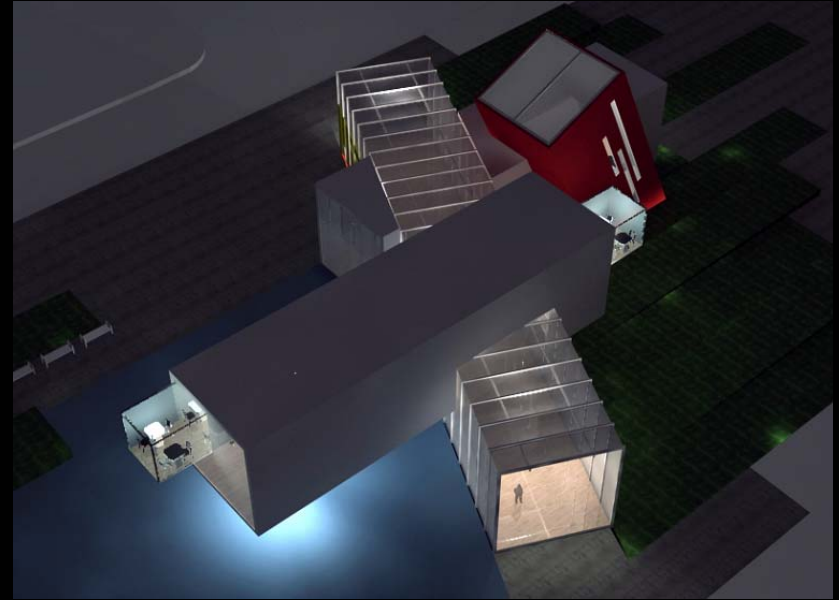
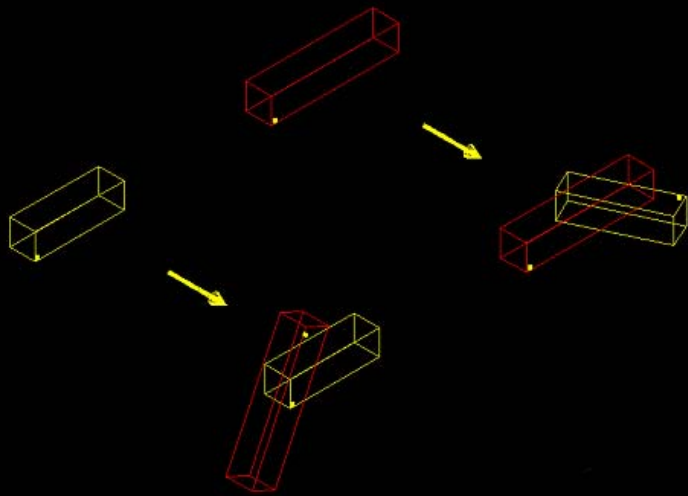


cultural history museum, Los Angeles
(Jin-Ho Park)





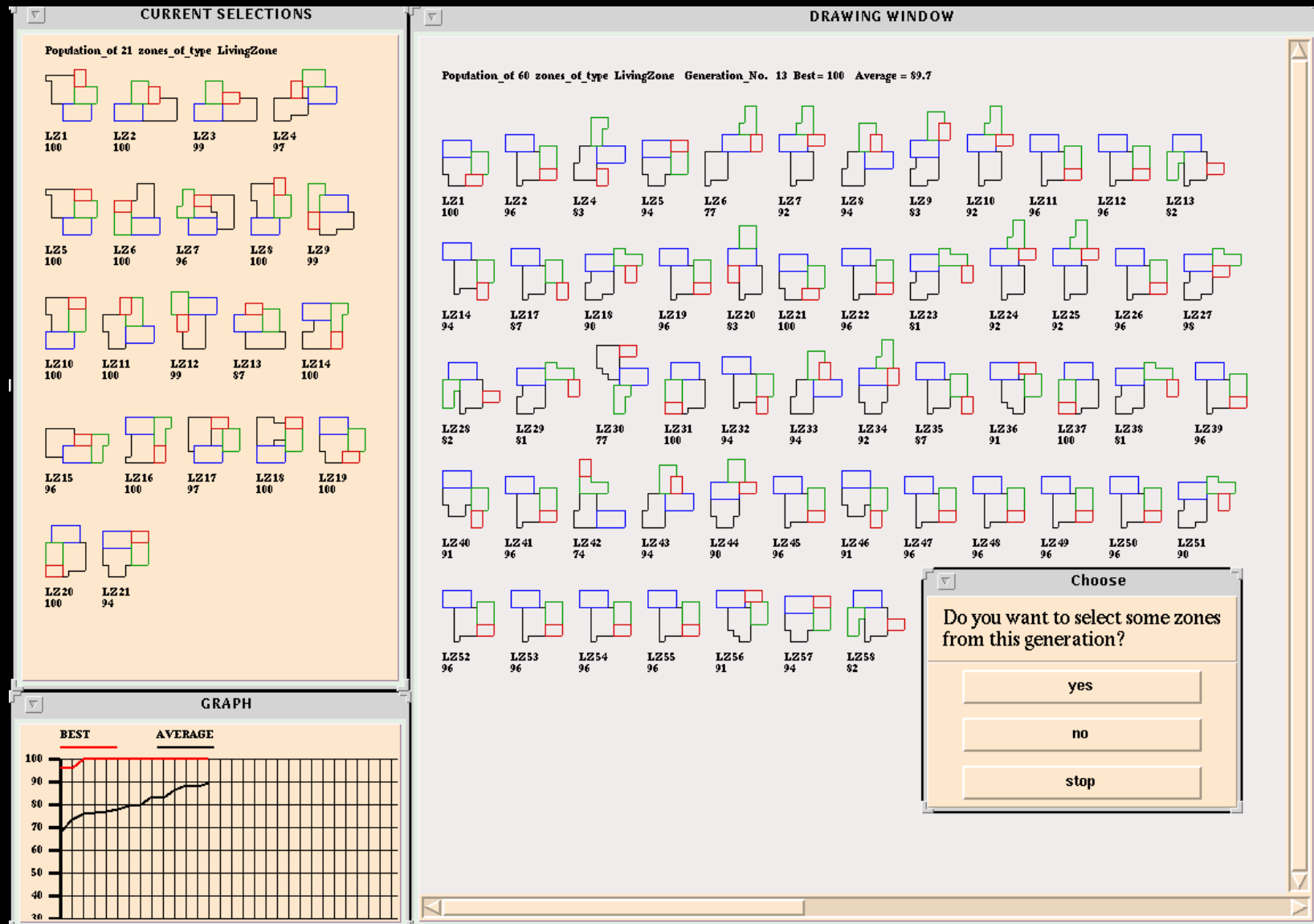
hillside townhouses (Gabriela Celani)



subway station, MIT campus (Gane, Gichuhi,Tian)

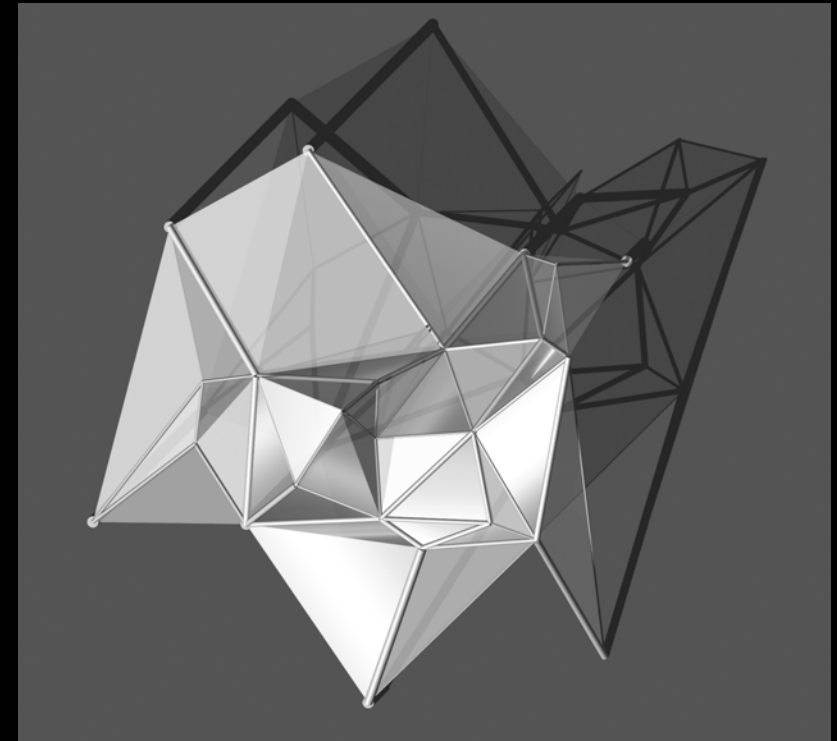
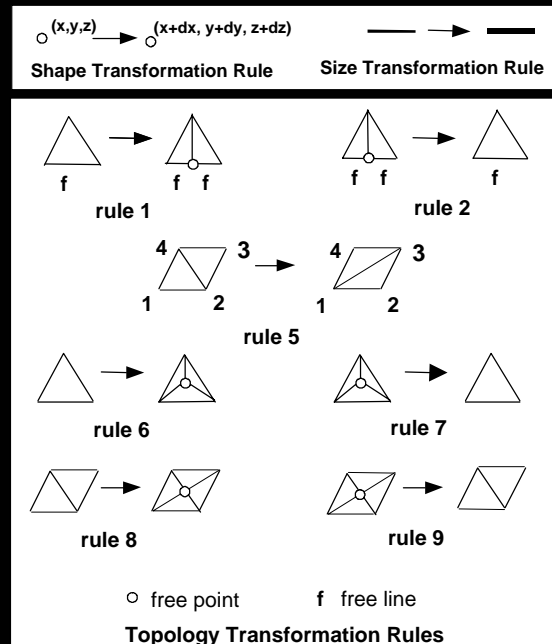
history of computation

- 1930s formal theories of computation (Turing, Godel, Church, etc)
- 1940s first computer
 - > *neural nets (McCulloch and Pitts)*
 - production systems (Post)
- 1950s > *parallel computation (von Neuman)*
 - > *cellular automata (Ulam, von Neuman)*
 - generative grammars (Chomsky)
- 1960s > *evolutionary computation*
 - pattern grammars (Fu)
- 1970s shape grammars (Stiny, Gips)
- 1980s > *artificial life (Langton), self-organizing systems*



evolutionary design of houses (from Rosenman and Gero,1999)

rules



generated pavilion design (top view)

Specifications (Syntax) <ul style="list-style-type: none"> material properties number of supports and locations symmetry joint angles 	Constraints (Semantics) <ul style="list-style-type: none"> stress Euler buckling displacement geometric obstacles
Objectives (Semantics) <ul style="list-style-type: none"> <u>efficiency</u> <ul style="list-style-type: none"> minimum mass <u>economy</u> <ul style="list-style-type: none"> minimum number of distinct cross-sections minimum number of distinct lengths <u>utility</u> <ul style="list-style-type: none"> maximum enclosure space minimum surface area 	<ul style="list-style-type: none"> <u>aesthetics</u> <ul style="list-style-type: none"> uniformity metric = $\sigma(\text{member lengths})^1$ golden ratio metric = $\sum_{\text{num shapes}} \left -\frac{b}{a} + \left -\frac{b}{c} + \left -\frac{a}{b} \right \right \right$

performance criteria
(fitness functions)

ElfForm (Shea, 1997)

One of the interesting things about the ... programs that evolved in my experiment is that I do not understand how they work.

I have carefully examined their instruction sequences, but I do not understand them.

I have no simpler explanation of how the programs work than the instruction sequences themselves. It may be that the programs are not understandable.

Simulated evolution is a good way to create novel structures, but it is an inefficient way to tune an existing design.

Its weaknesses as well as its strengths stem from evolution's inherent blindness to the 'why' of a design . . .

Evolution chooses variations blindly, without taking into account how the changes will affect the outcome.

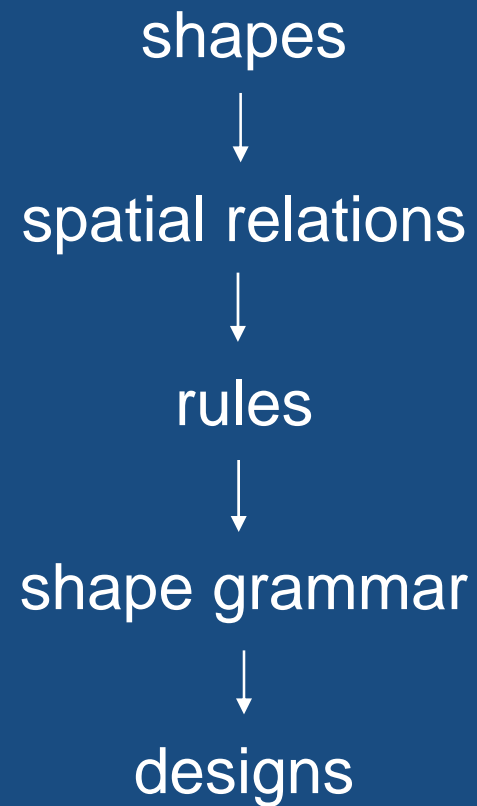
Daniel Hillis

Sims's computer-generated images give us an example of unintelligible emergence . . . Sims himself cannot always explain the changes he sees appearing on the screen before him, even though he can access the mini-program responsible for any image he cares to investigate. . .

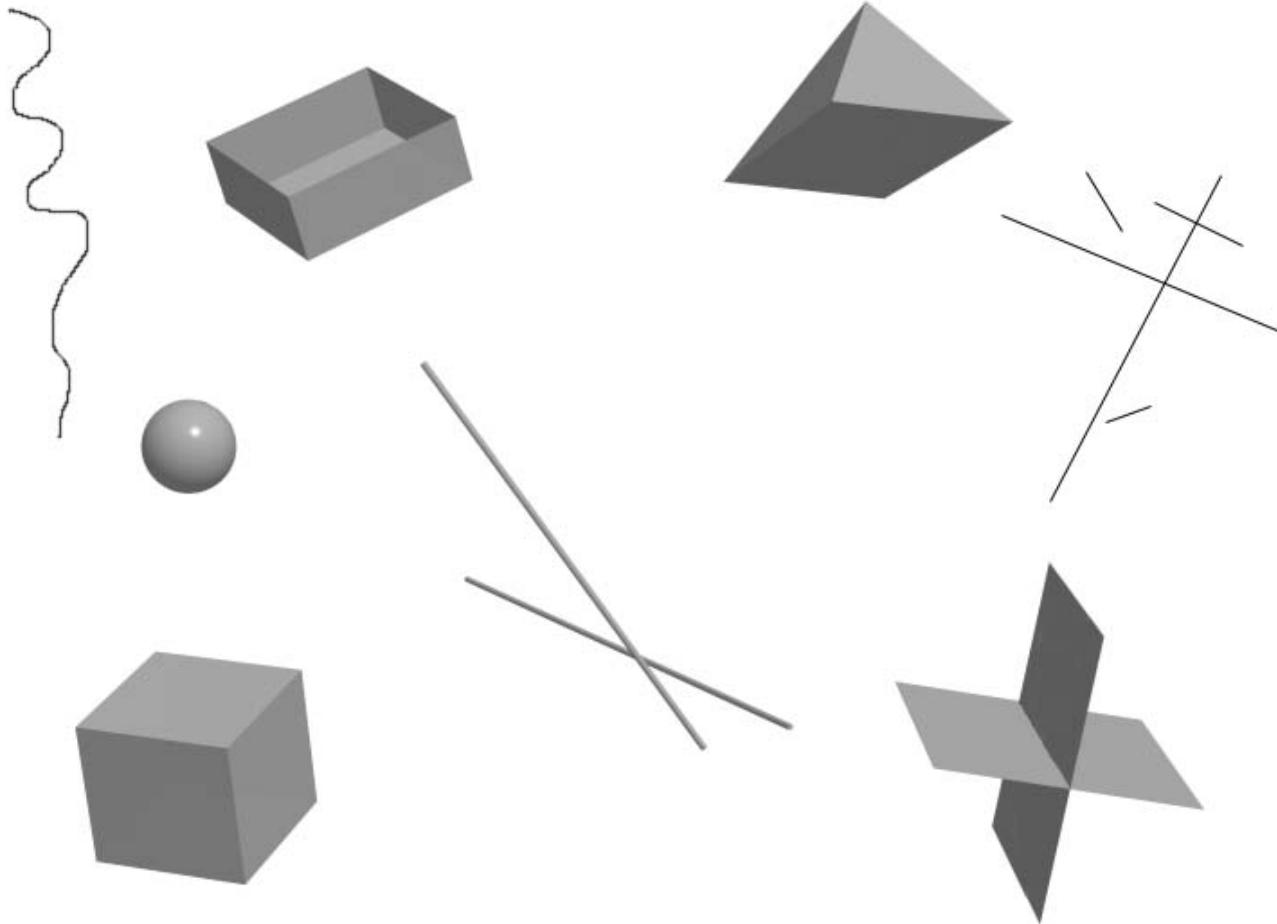
Often he cannot even 'genetically engineer' the underlying LISP expression so as to get a particular visual effect.

Margaret Boden

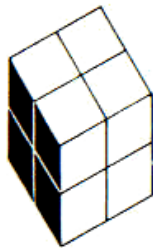
stages of shape grammar development



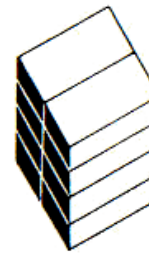
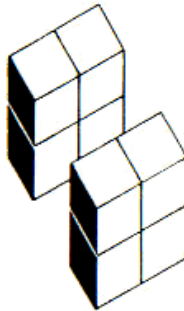
shapes



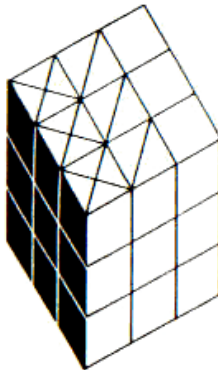
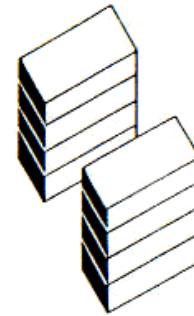
Froebel building gifts



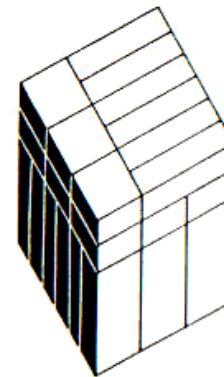
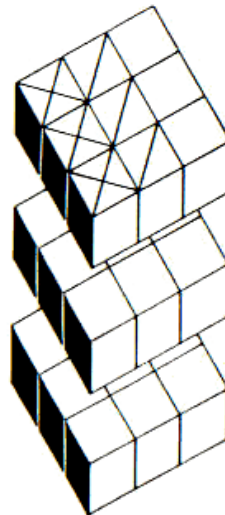
Gift 3



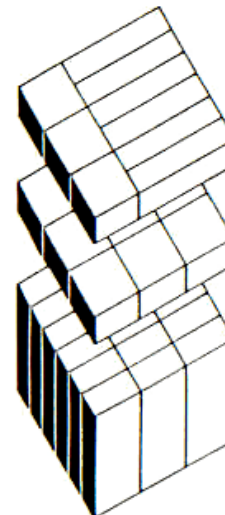
Gift 4



Gift 5



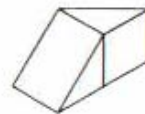
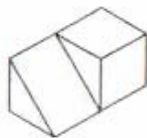
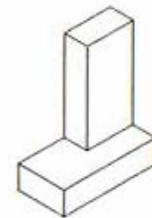
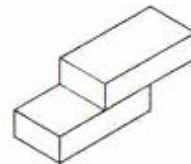
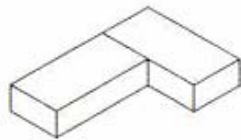
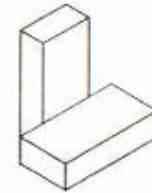
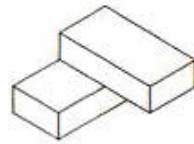
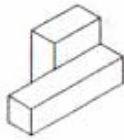
Gift 6



spatial relations

arrangements of shapes

spatial relations

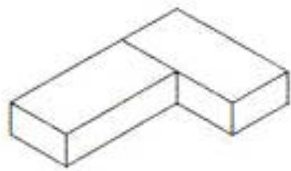


shape rules

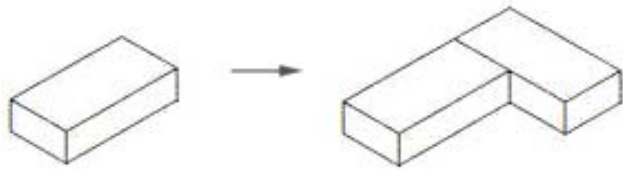
shapes: A, B

spatial relation: $A + B$

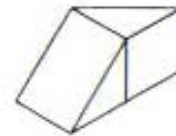
rules:
 $A \rightarrow A + B$
 $B \rightarrow A + B$



spatial relation



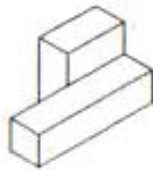
rule



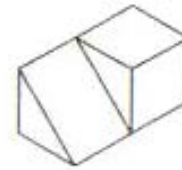
spatial relation



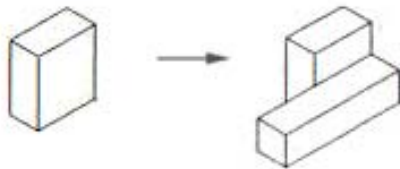
rule



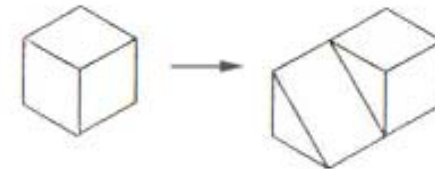
spatial relation



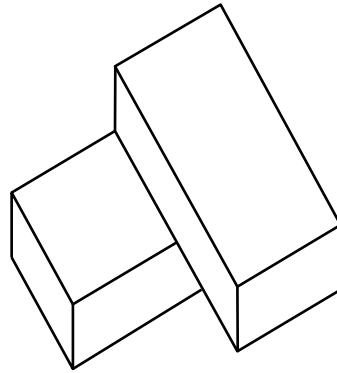
spatial relation



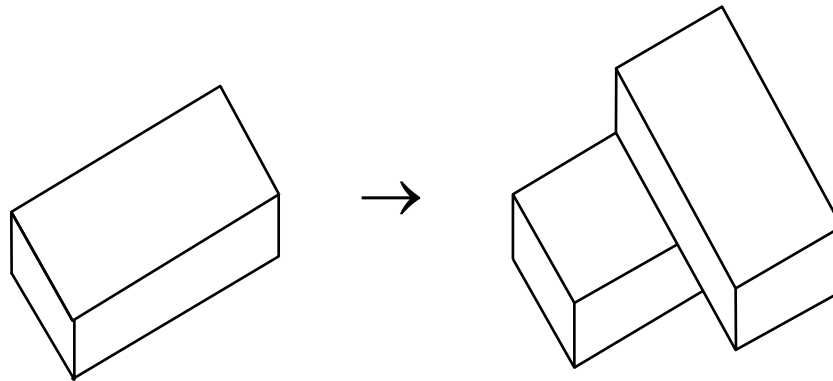
rules



rules



spatial relation $A + B$ between two oblongs



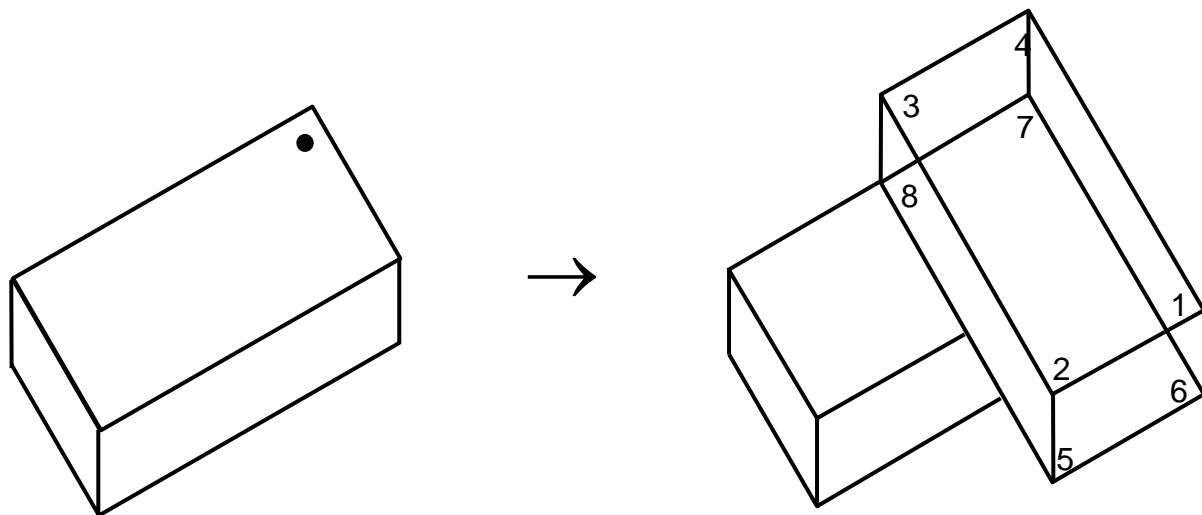
addition rule $A \rightarrow A + B$ based on the spatial relation

applying a rule

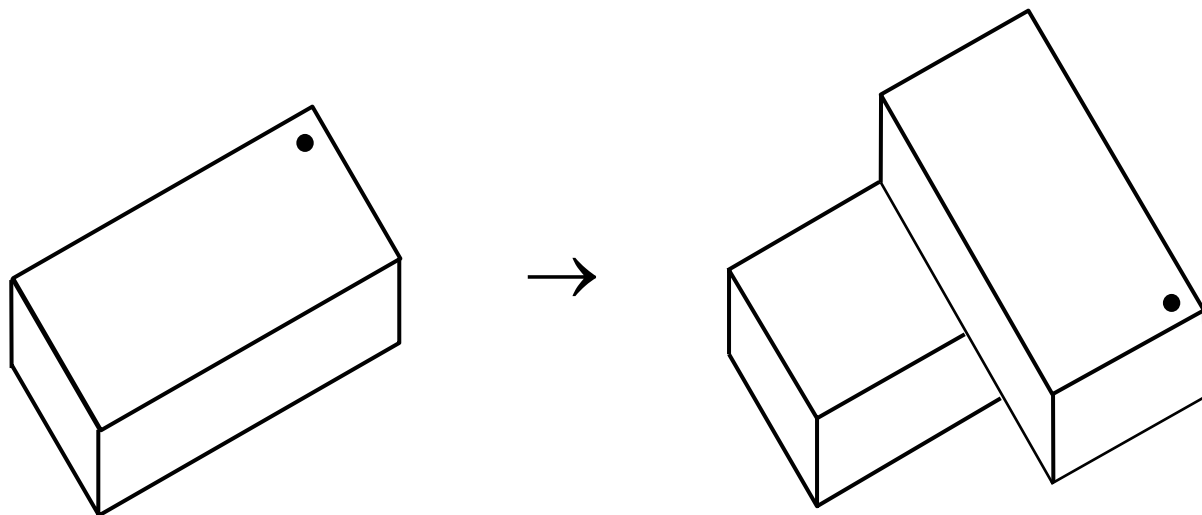
$A \rightarrow A + B$

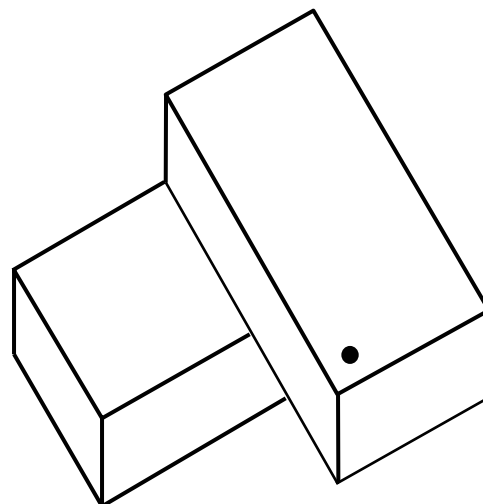
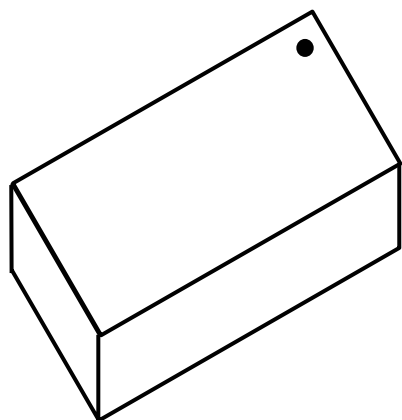
match the shape A
with a shape in a design

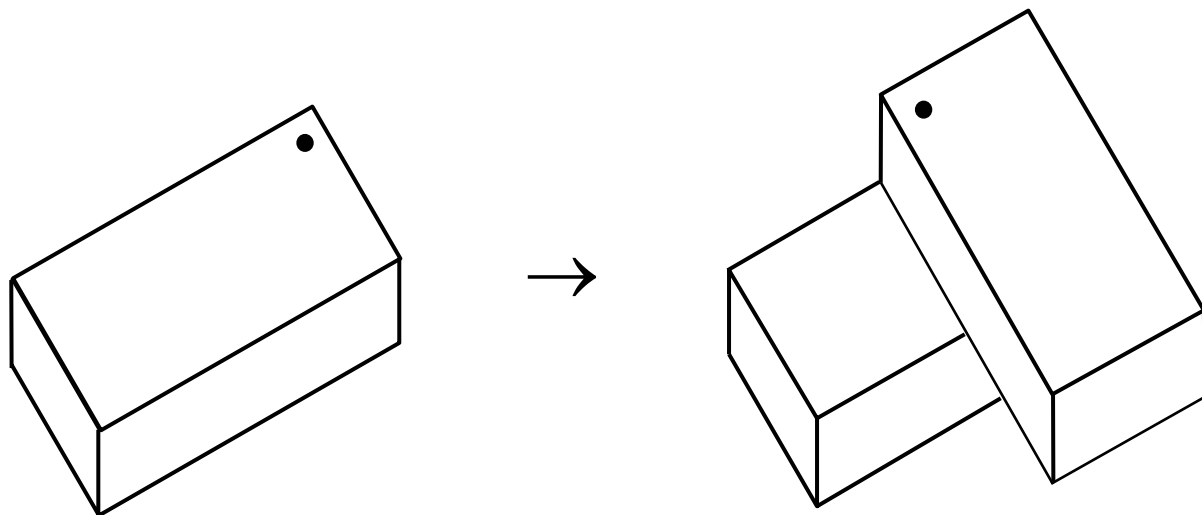
add the shape B to the design
to create the spatial relation A+B

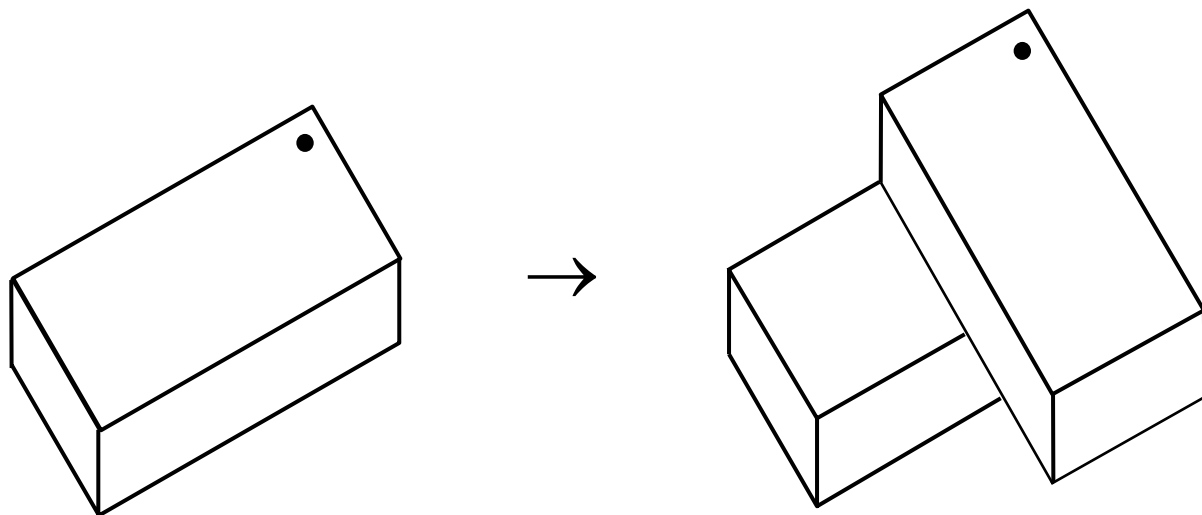


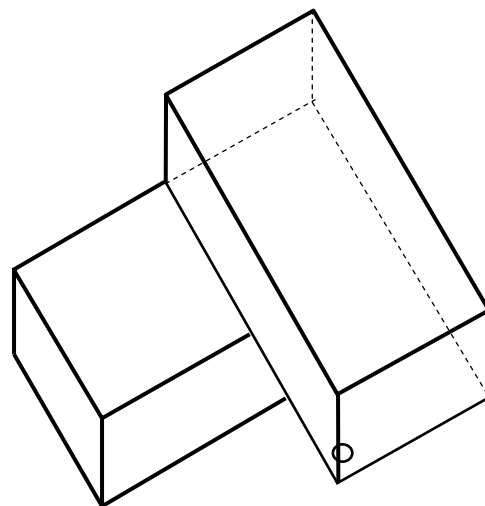
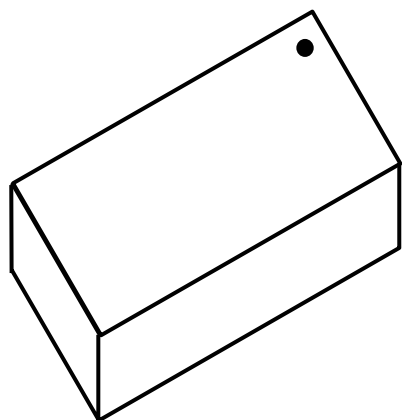
different labelings of the rule $A \rightarrow A + B$

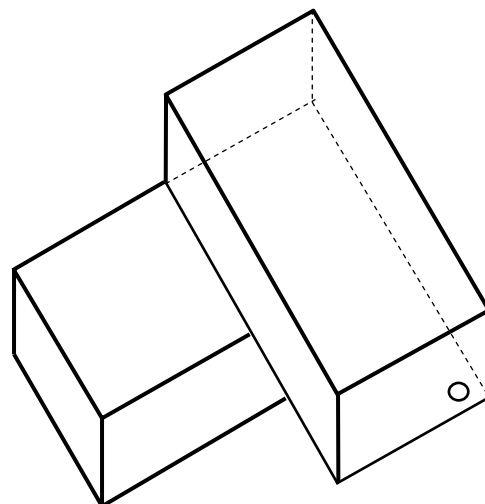
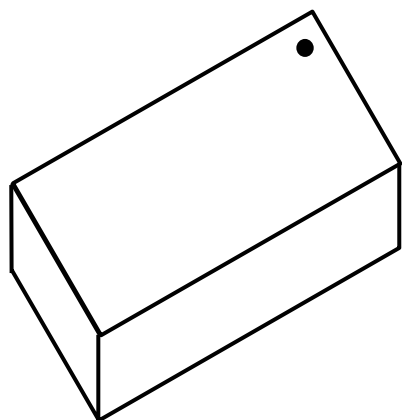


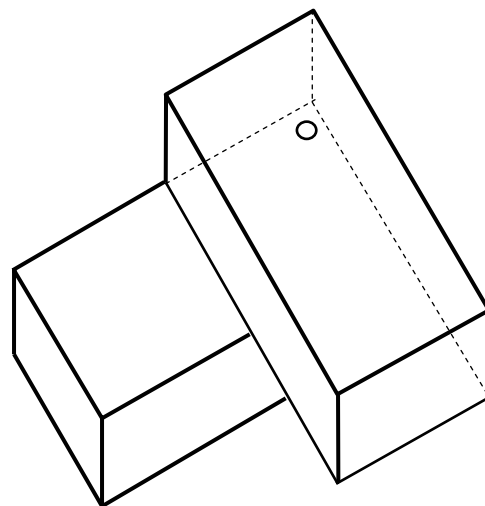
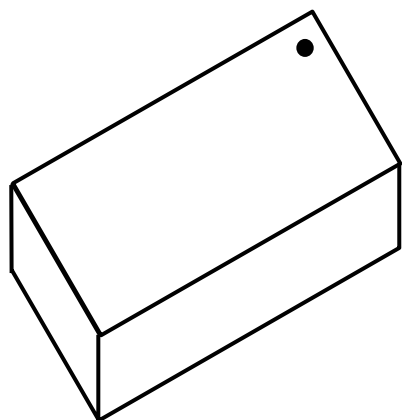


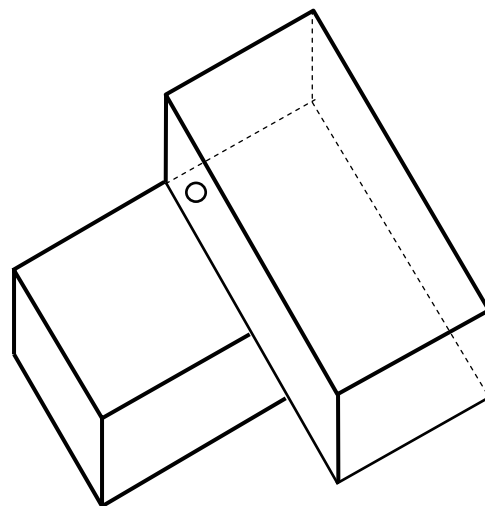
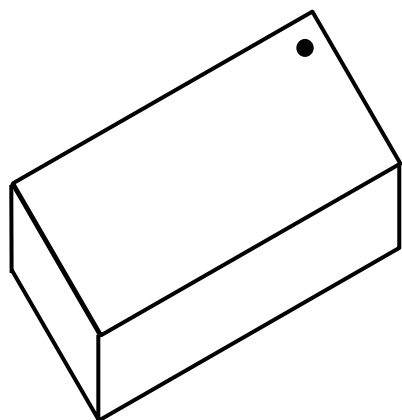


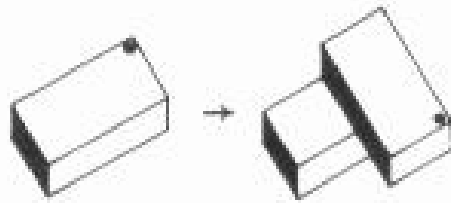




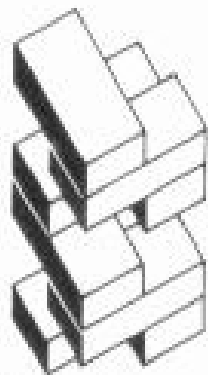




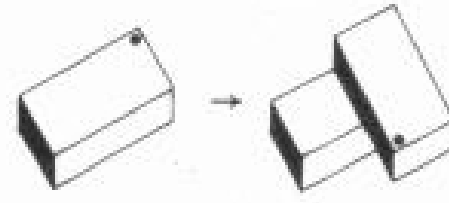




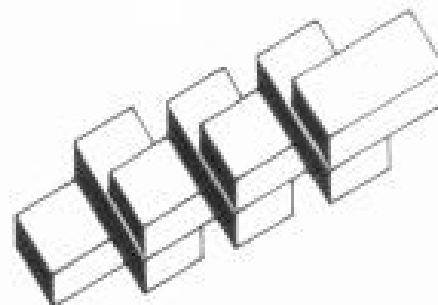
rule



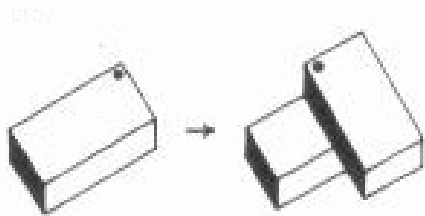
design



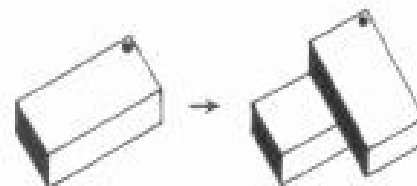
rule



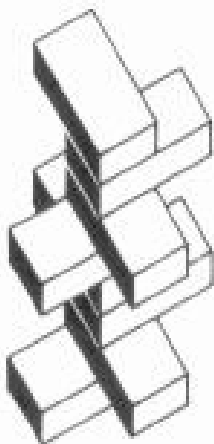
design



rule



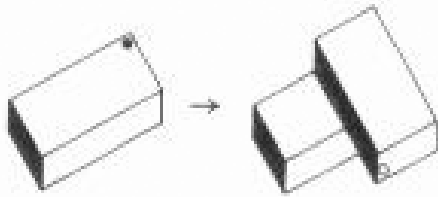
rule



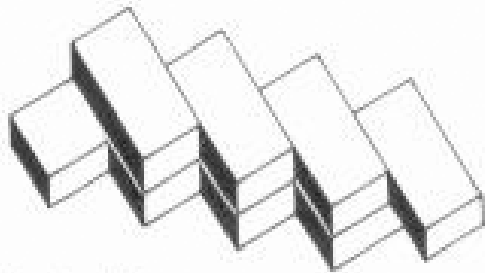
design



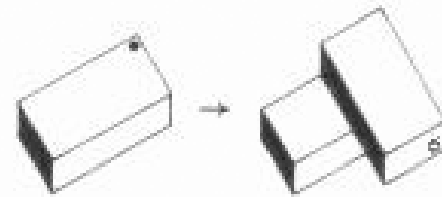
design



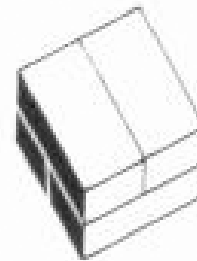
rule



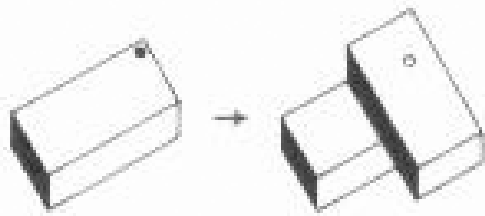
design



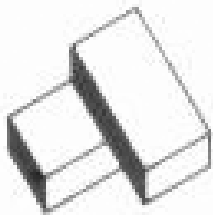
rule



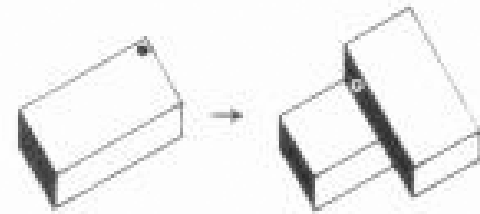
design



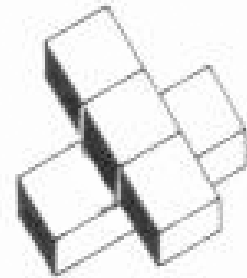
rule



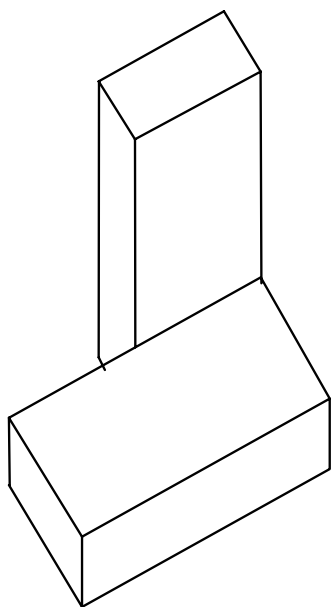
design



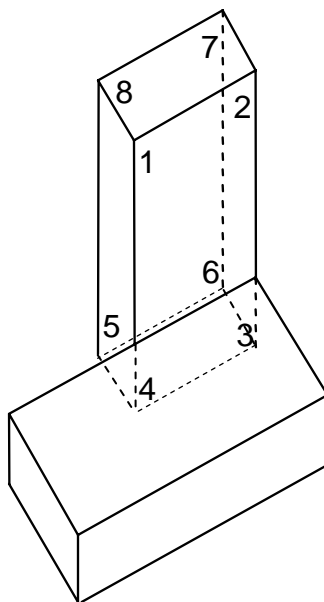
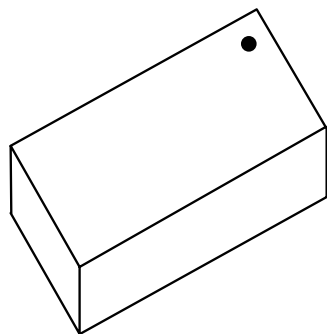
rule



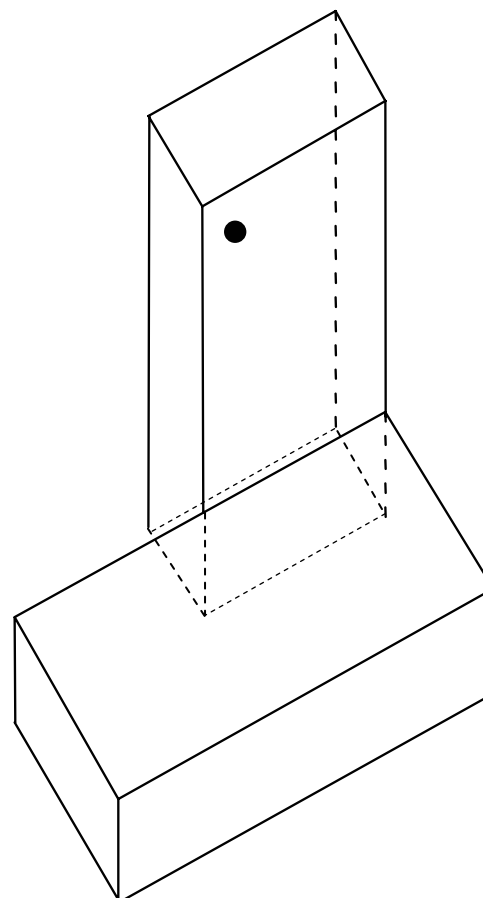
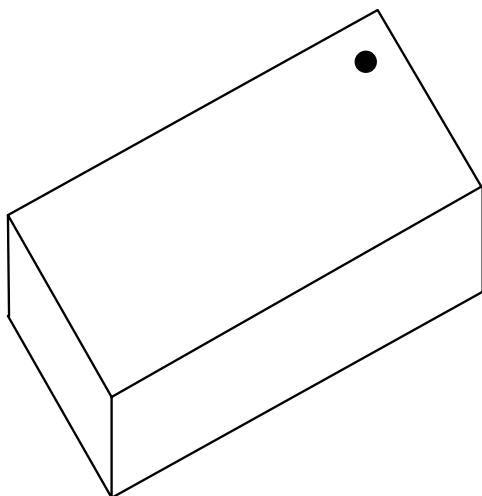
design

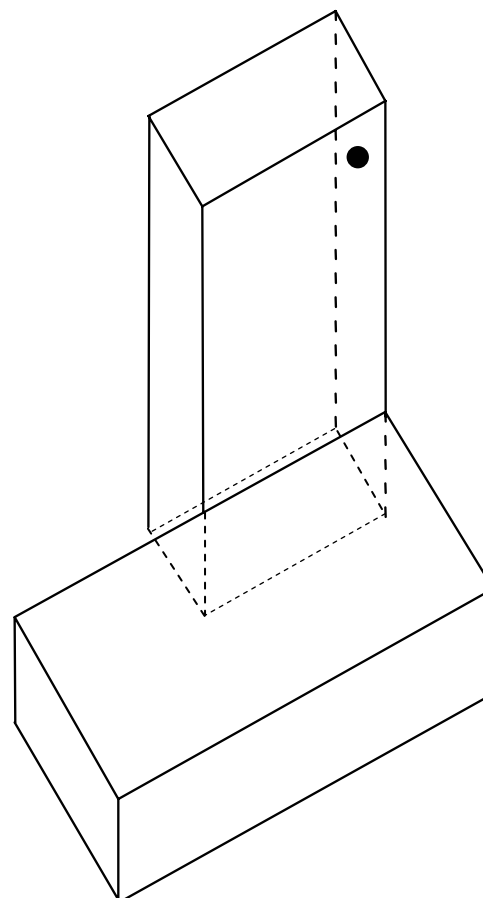
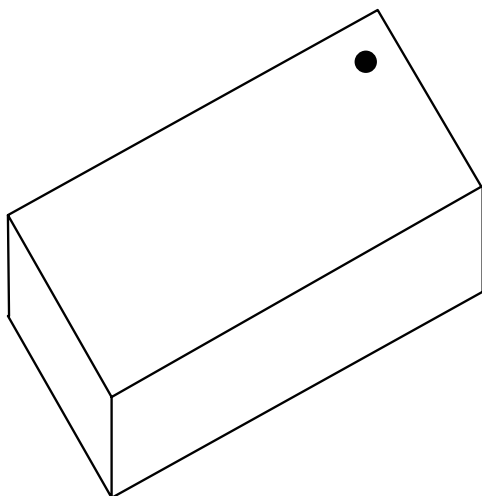


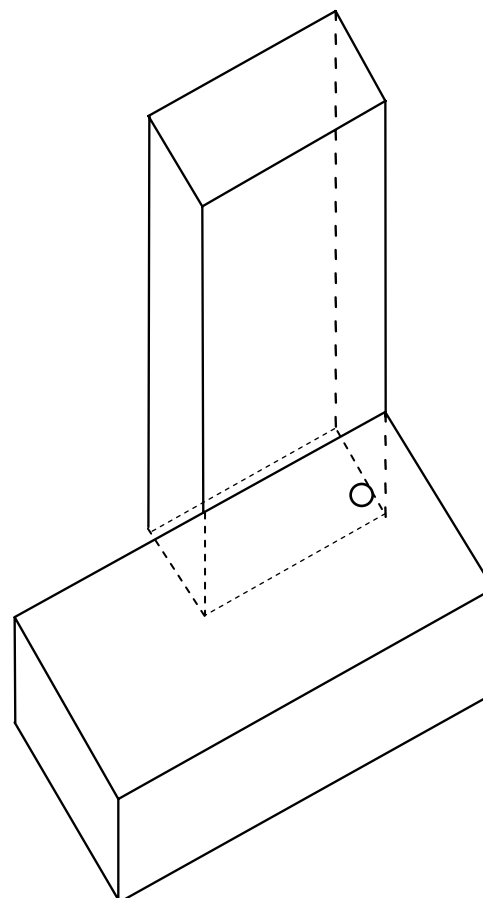
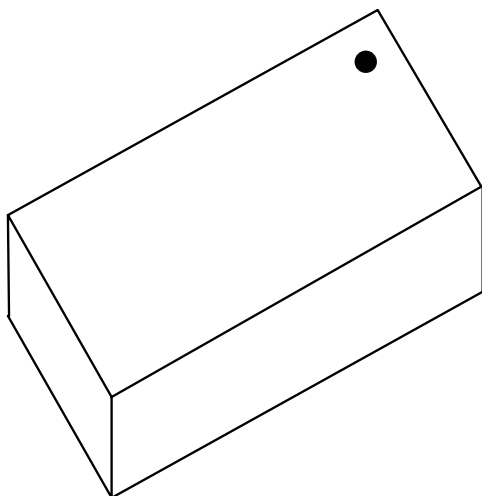
spatial relation $A + B$ between two oblongs

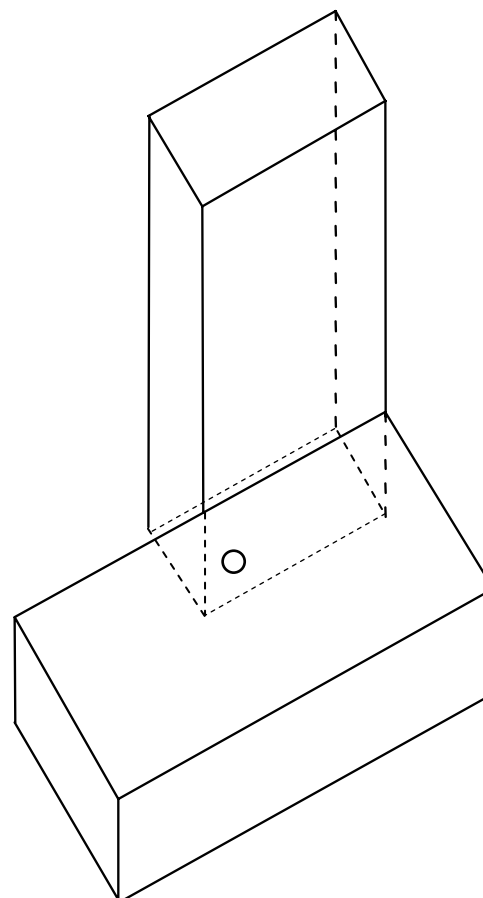
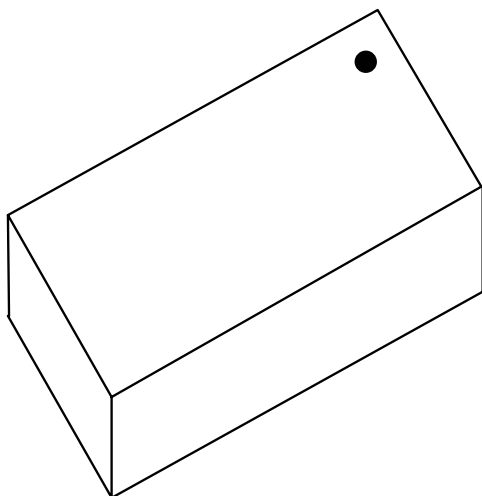


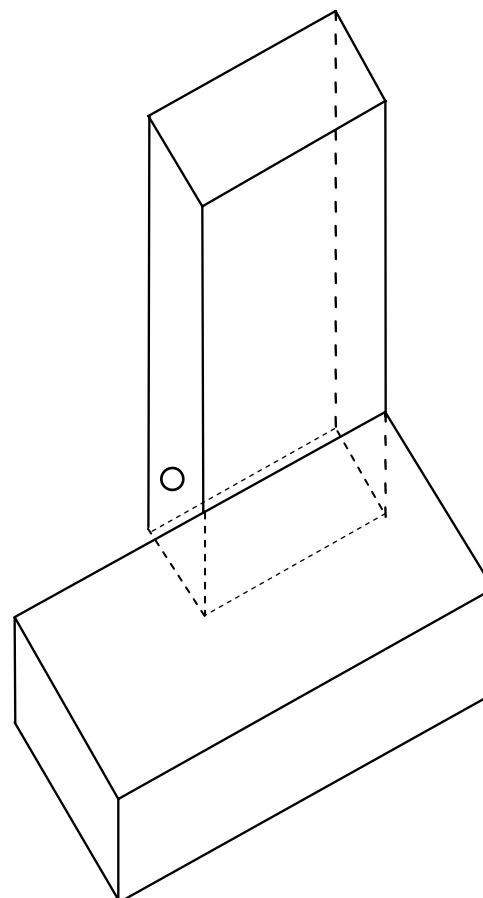
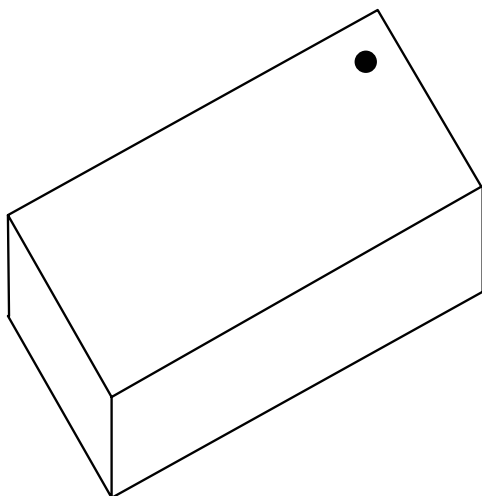
different labelings of the rule $A \rightarrow A + B$

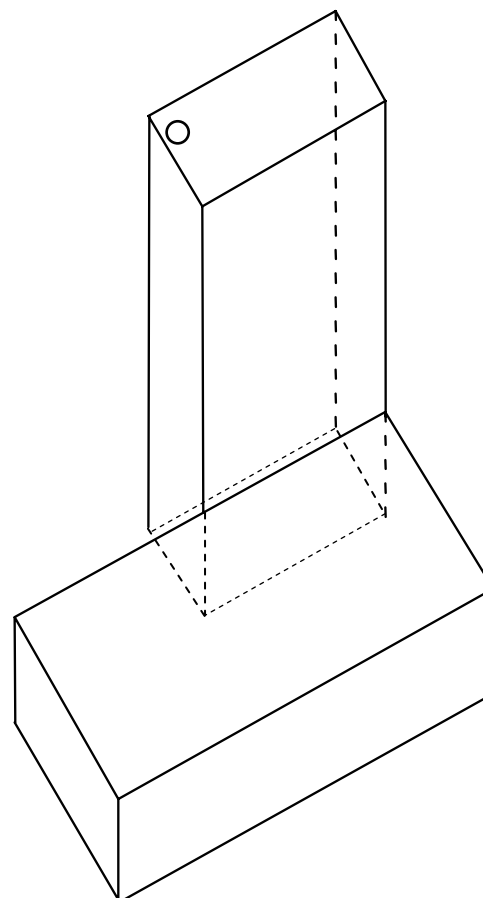
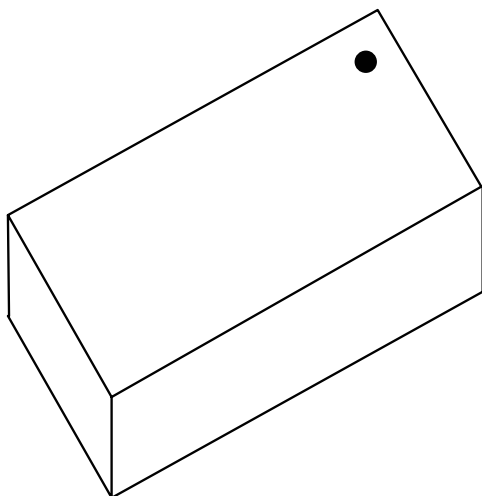


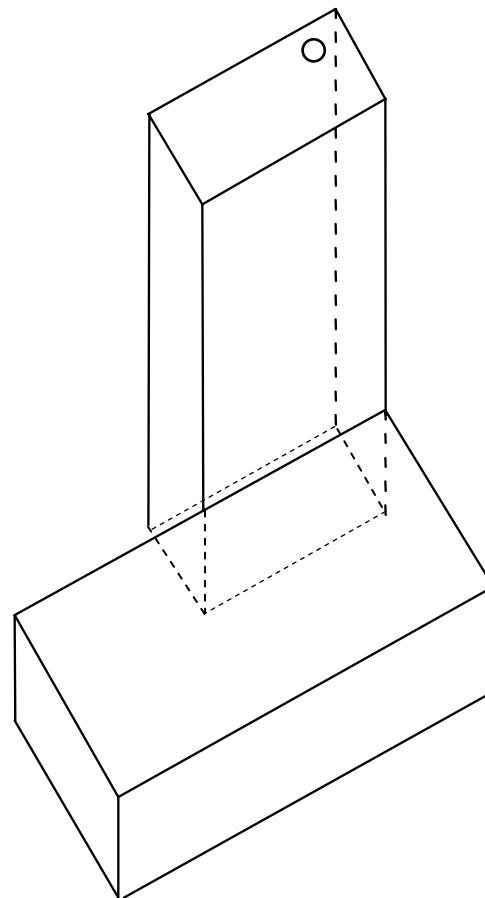
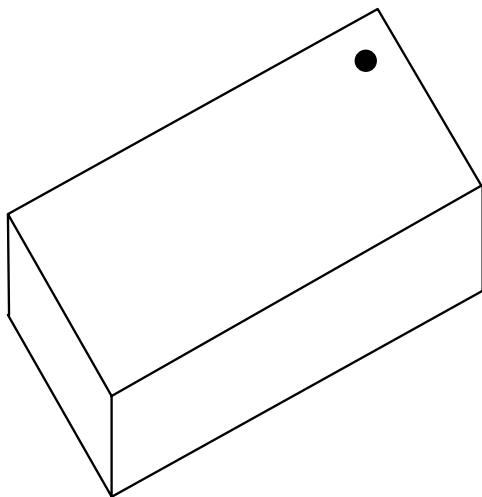


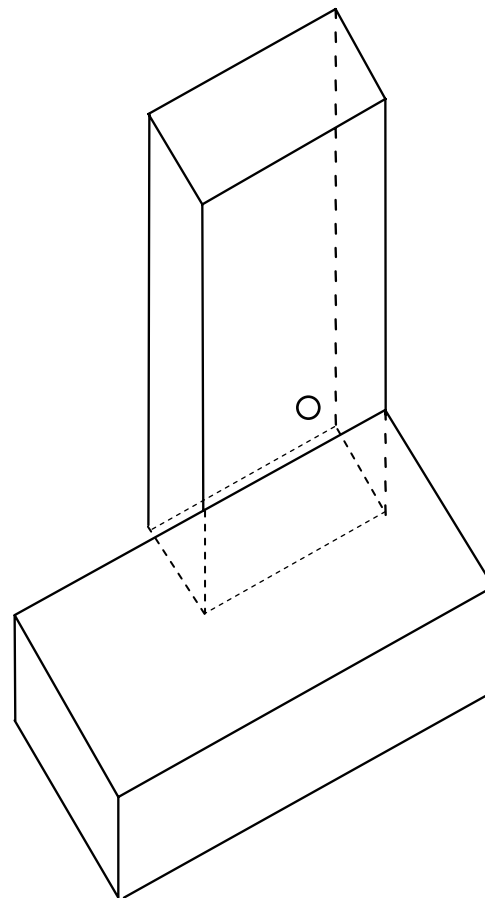
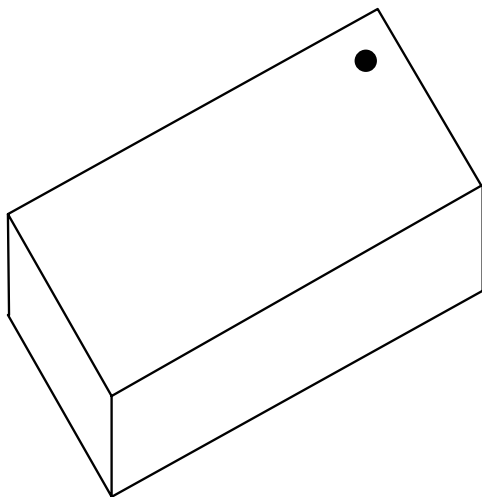


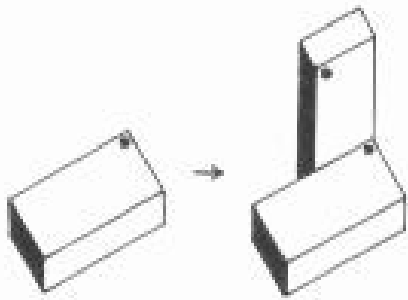




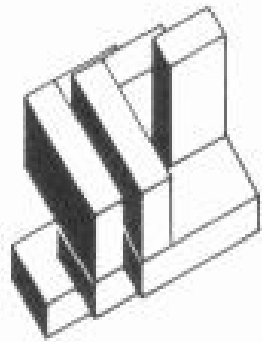




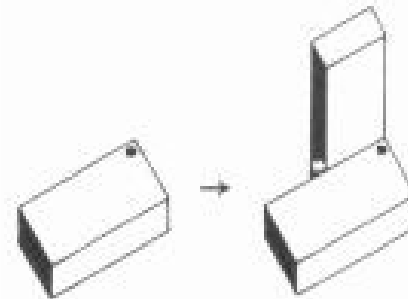




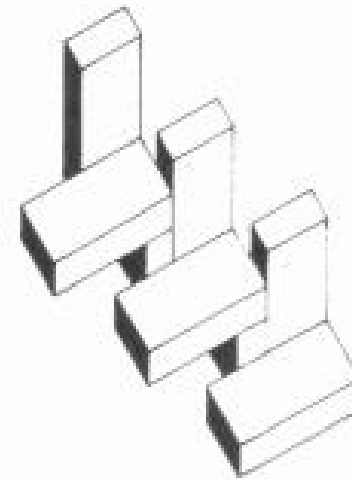
rule



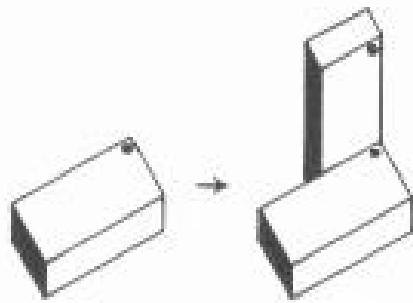
design



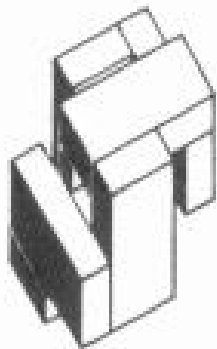
rule



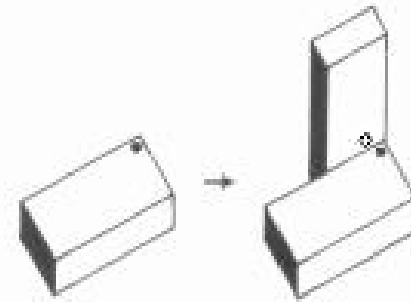
design



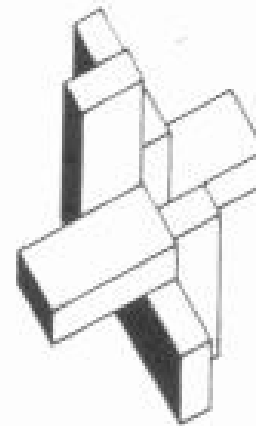
rule



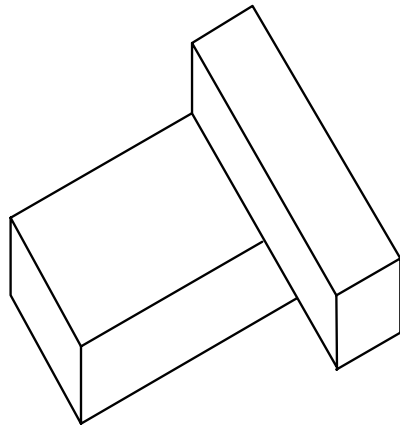
design



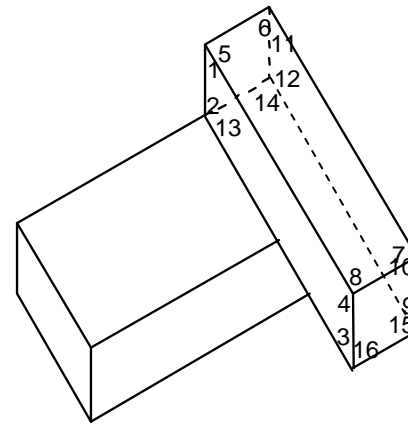
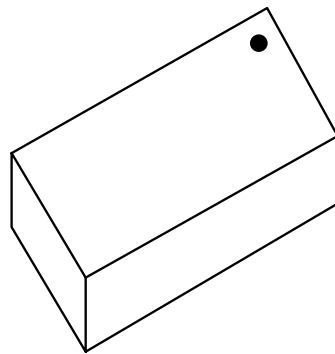
rule



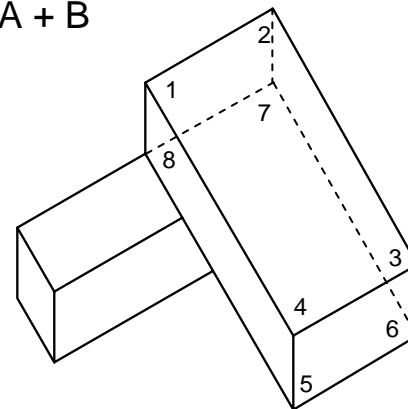
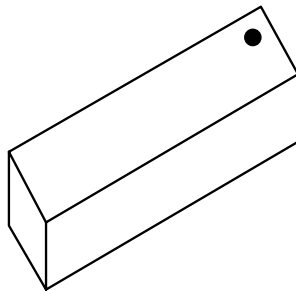
design



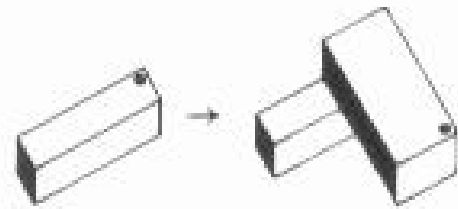
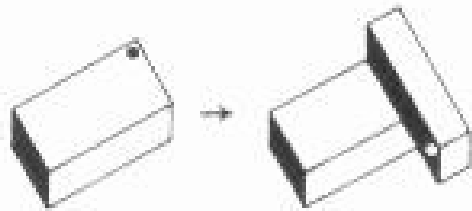
spatial relation $A + B$ between two oblongs



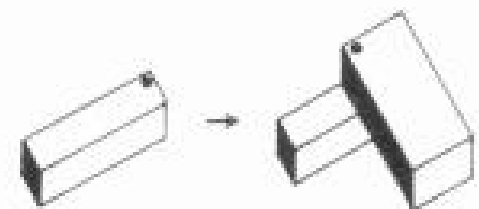
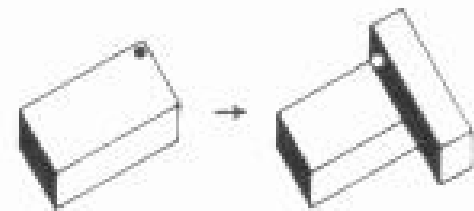
different labelings of the rule $A \rightarrow A + B$



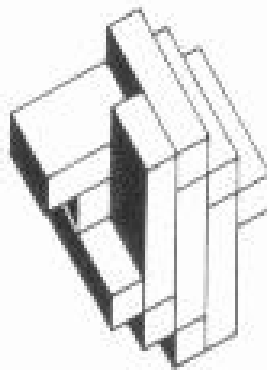
different labelings of the rule $B \rightarrow A + B$



rules



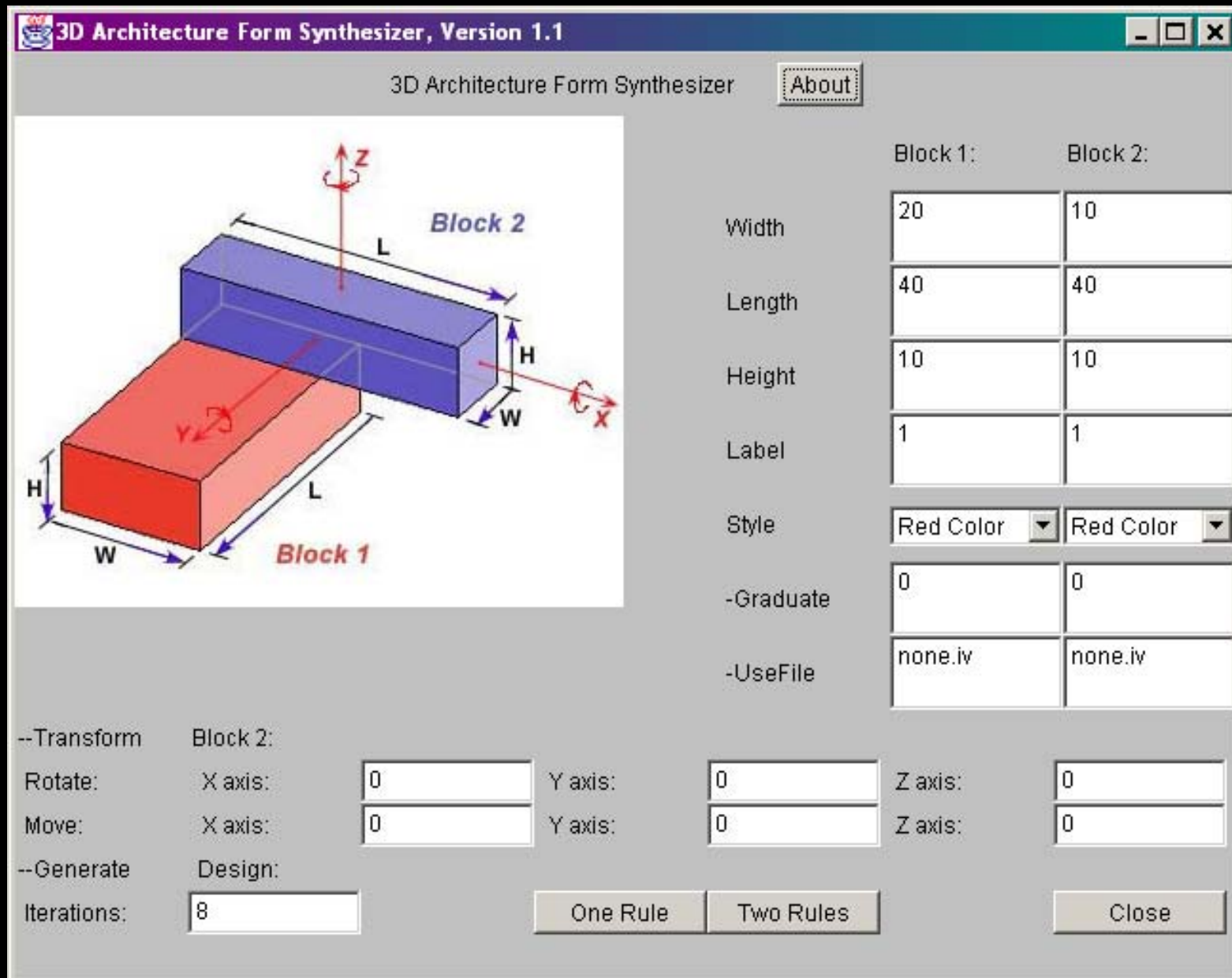
rules



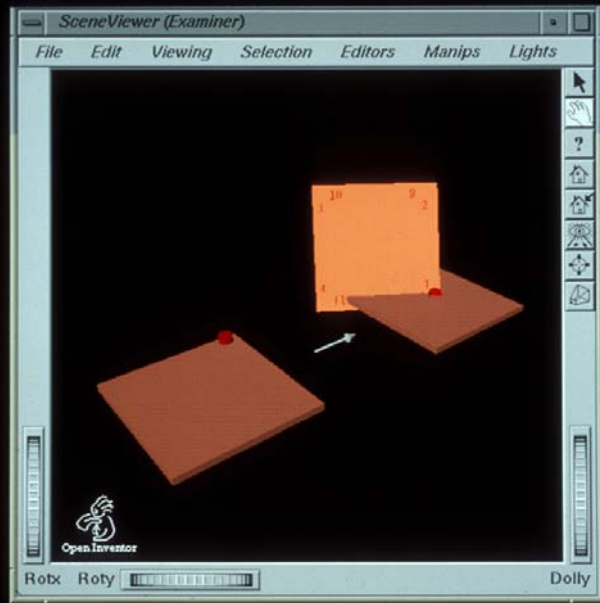
design



design



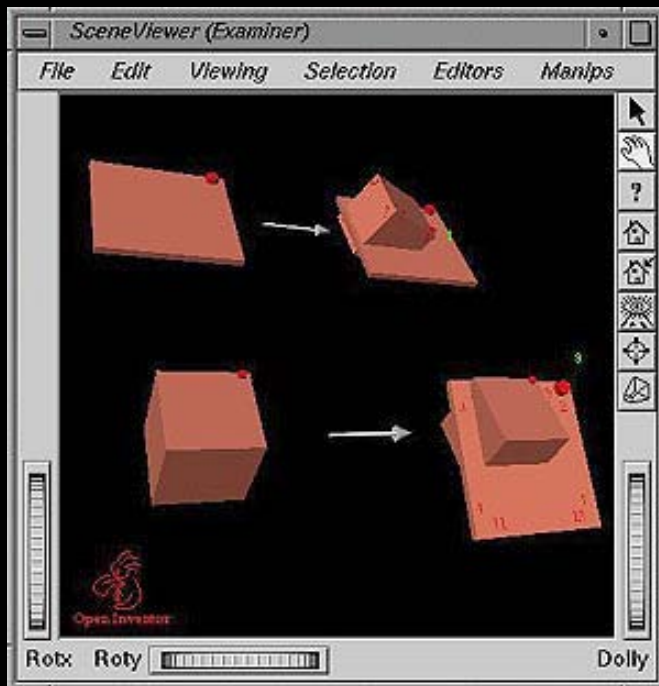
3D architecture form synthesizer (Yufei Wang)



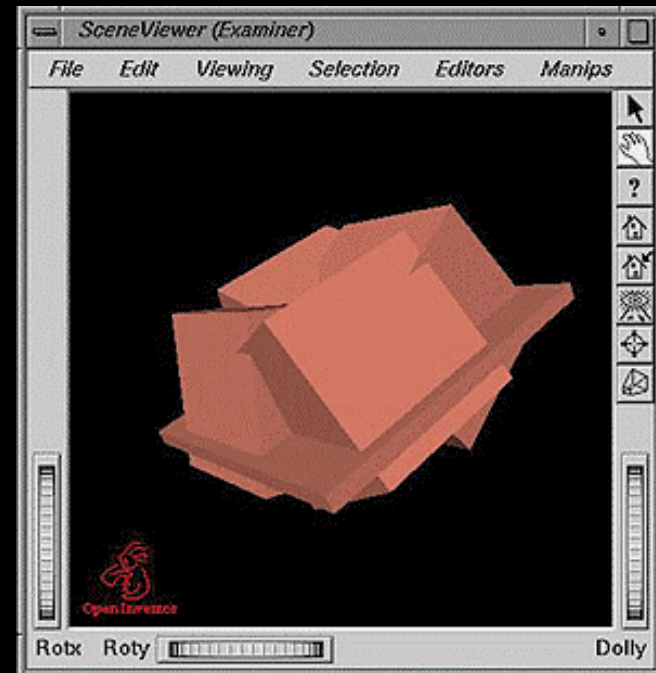
rule

designs





rule



designs