

Machines for Producing Landscape

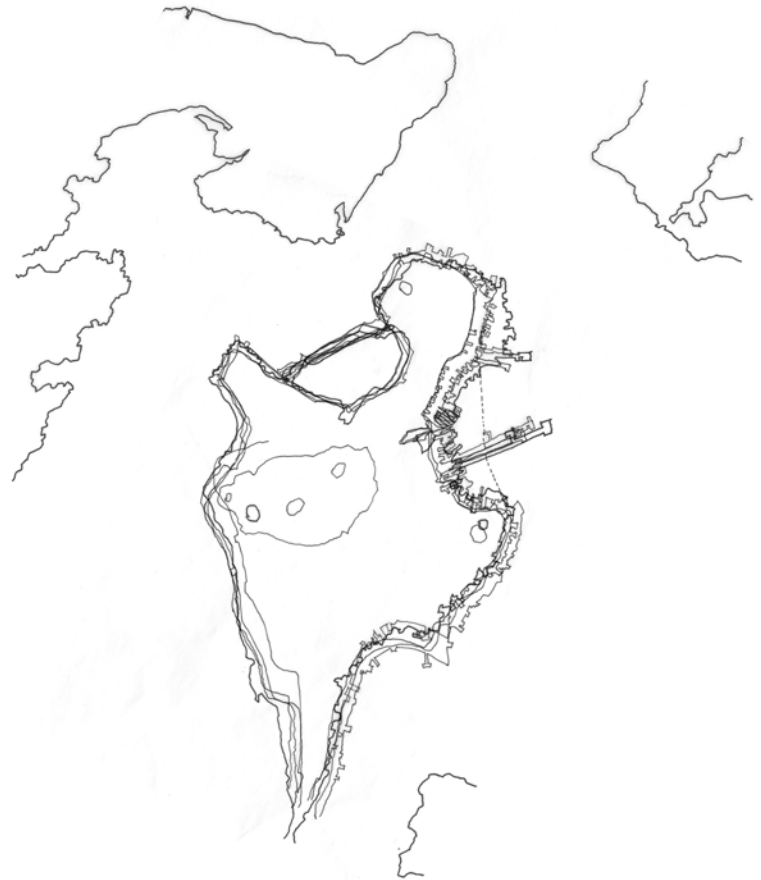
proposals and explorations in displacing the edge of Boston

Freddie Phillipson and Elizabeth Nguyen, December 2003





overlaid shorelines 1630-present



alterations to shoreline 1630-1769

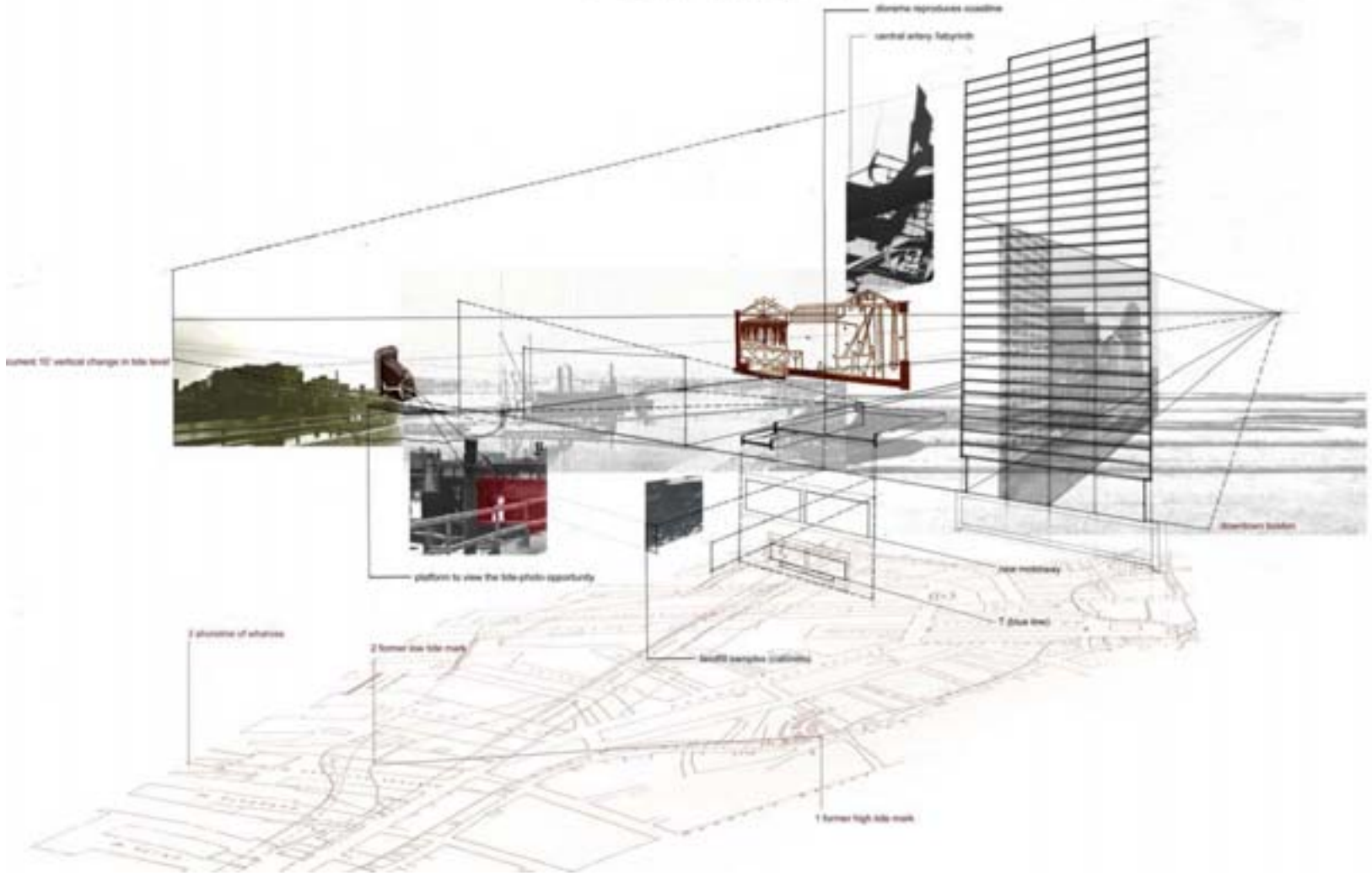
where is the edge of boston?

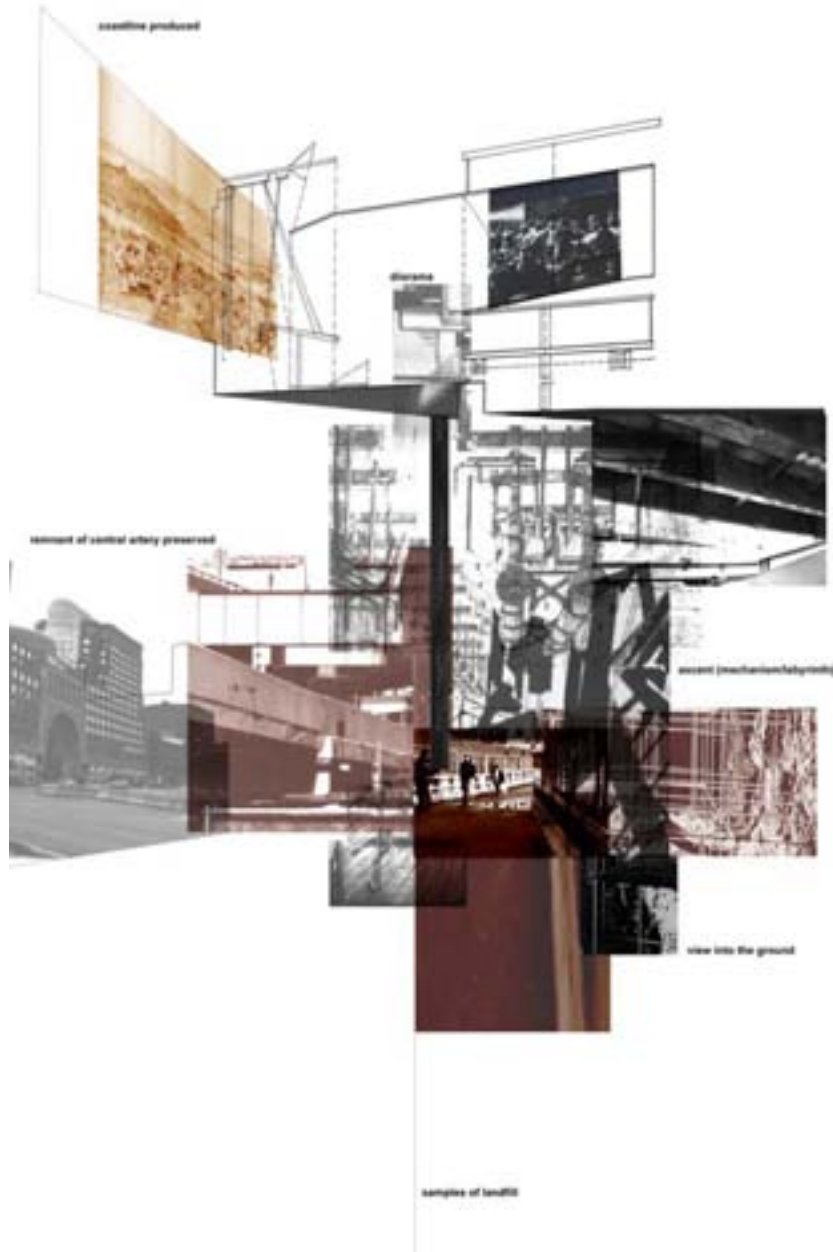


central artery- another shoreline



high and low tide marks and 1630 shoreline overlaid







Where are the zones along the central artery with a longstanding tradition of high pedestrian activity?

Haymarket vs. Chinatown vs. Financial District: Haymarket has been a hub for transportation as well as commerce since the establishment of Bullfinch Triangle. It was at once the "entrance" to the city and the bridge to the North End.

machines for producing landscapes

1. more linear

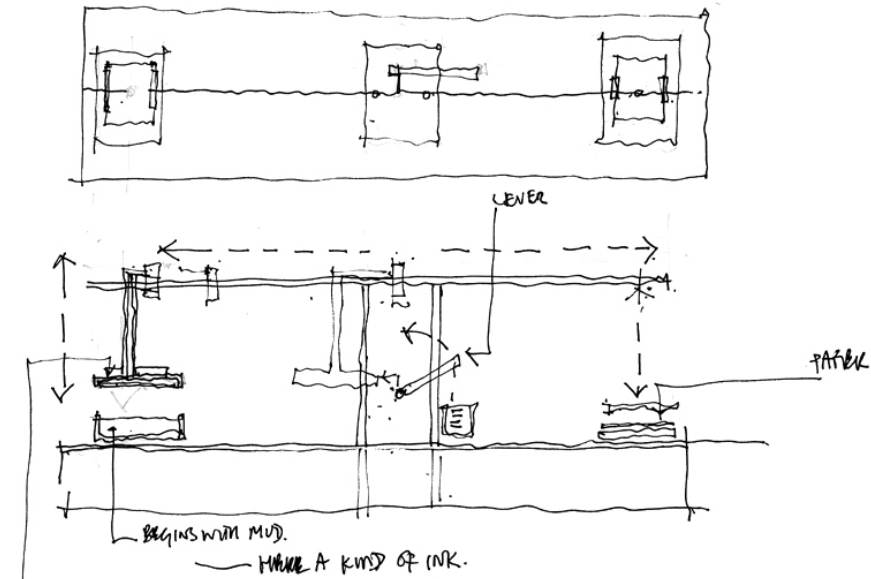
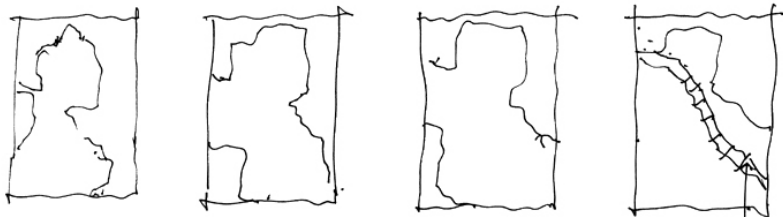


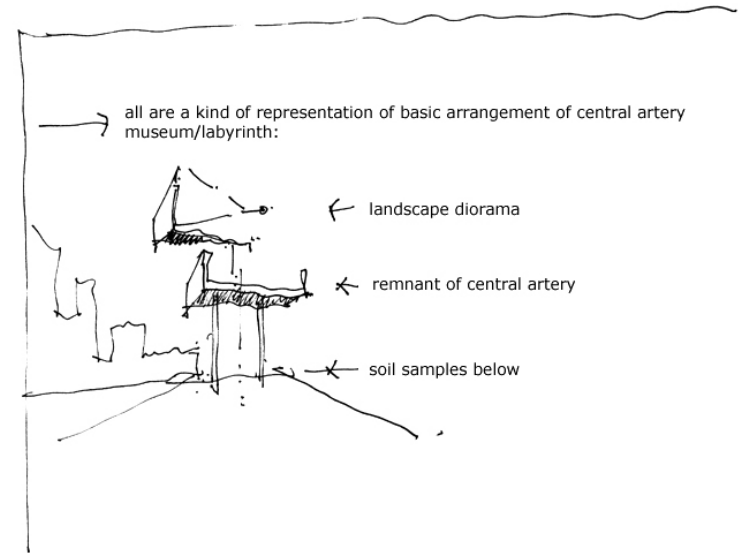
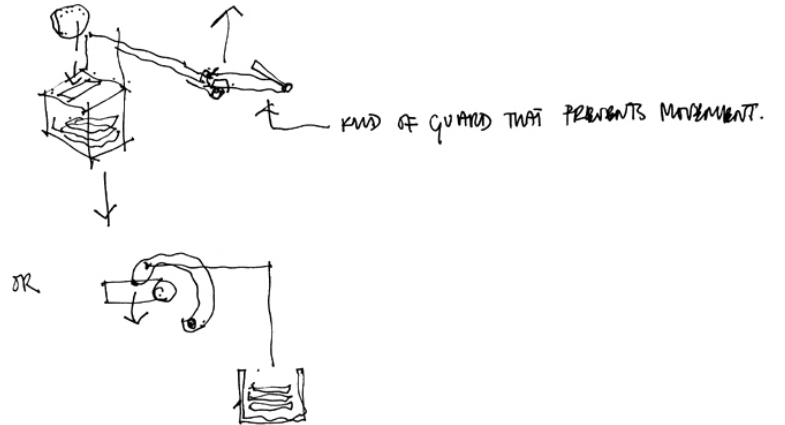
PLATE — each a relief of Boston's water edge from 1600's to the Big Dig } this is all the same process of manipulating the land



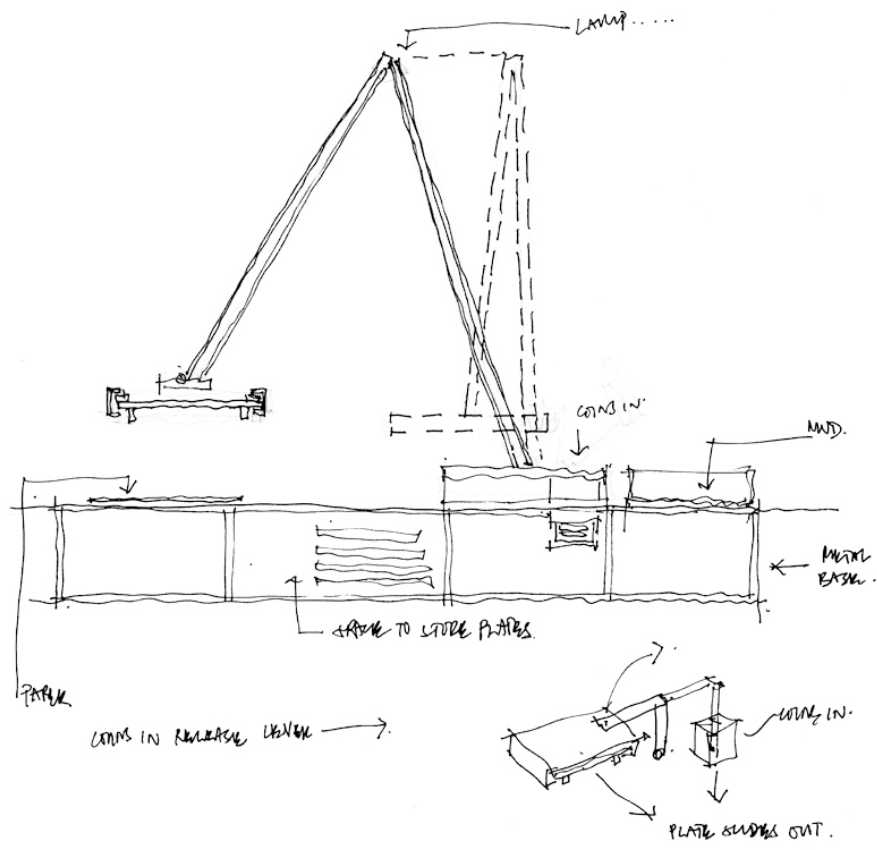
the parcels along the central artery

— museum + market:

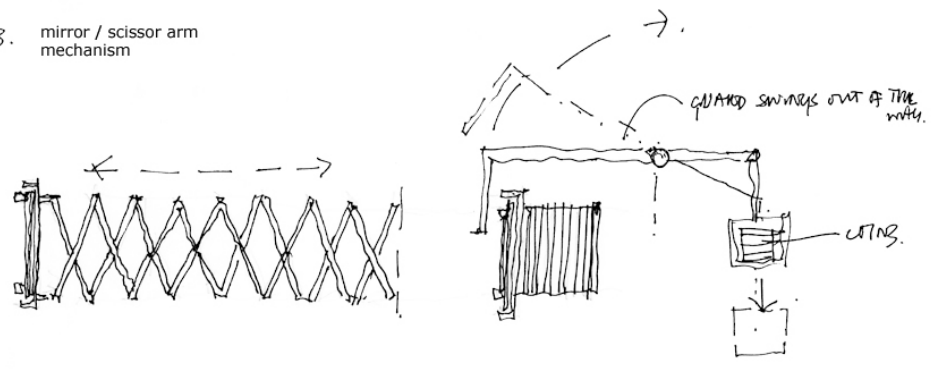
This could be a way of making postcards . . . with lever released by putting in the right number of coins



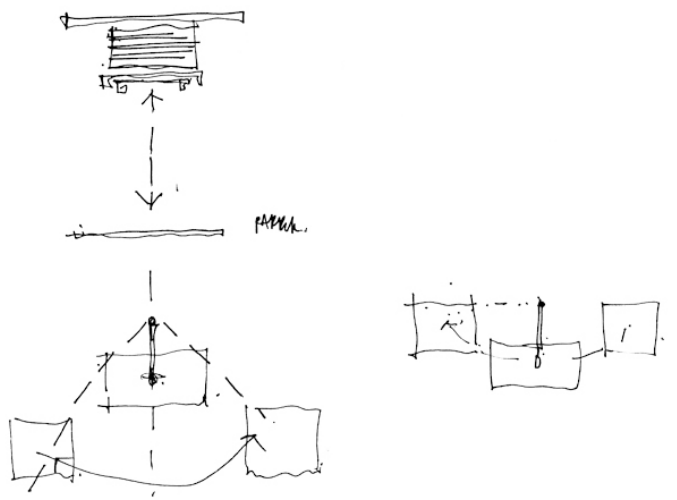
2. use ready-made mechanism



3. mirror / scissor arm mechanism



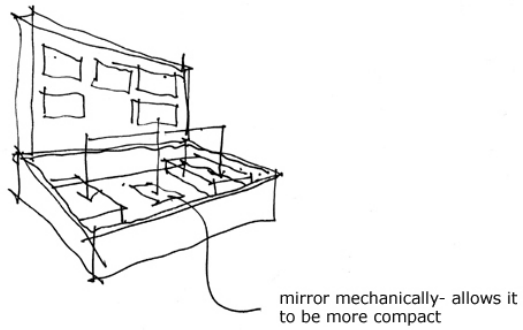
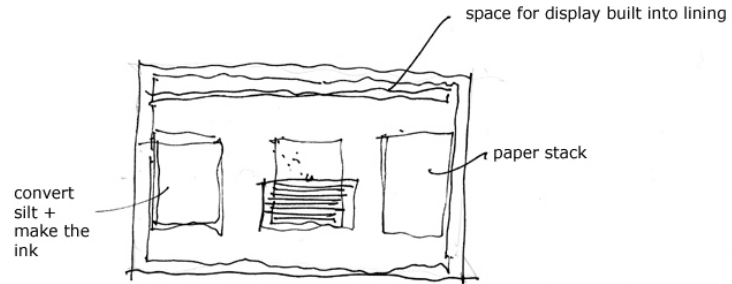
this could even be vertical:



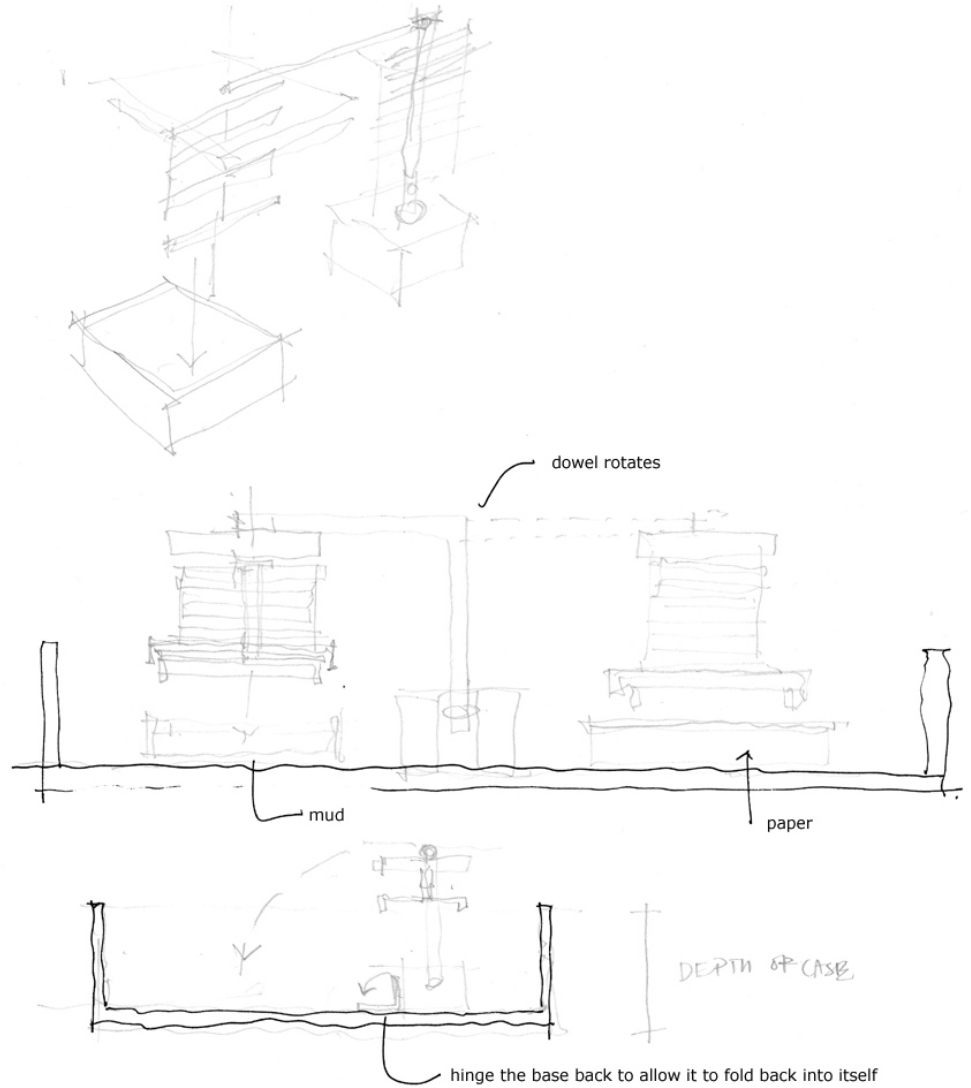
but needs to be able to swing from mud to paper

4. grand tour / C18 watercolorist's box

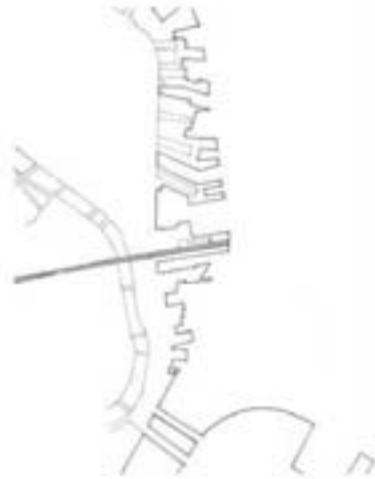
- make postcards of Boston waterfront / shoreline + keep / connect them . . . a portable museum or printing press



Do the postcards have to be views?



PROMENADE ALONG STATE STREET



A slice taken across the big dig 'shoreline' reveals any number of previous edges of Boston



2004



1630



1646



1676



1722



1796



1803



1807



1829



1838



1852

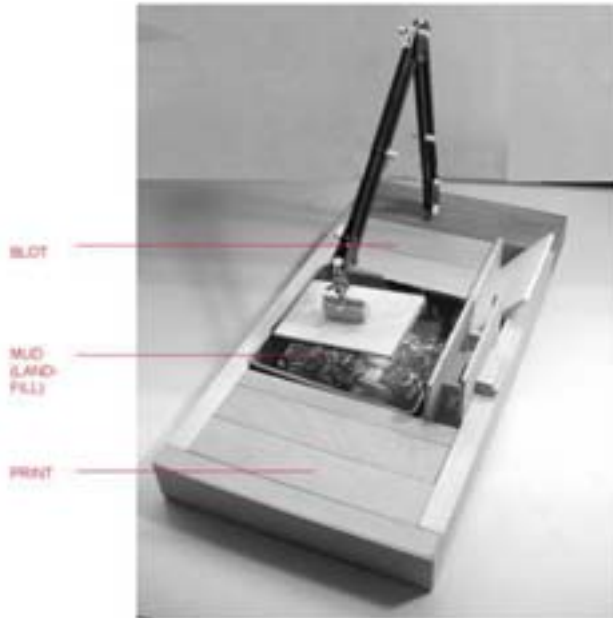
THESE MAPPED EDGES ARE ARBITRARY, THE PRODUCT OF CARTOGRAPHY



LIKE THE GREENWICH MERIDIAN

MACHINE FOR PRODUCING LANDSCAPES

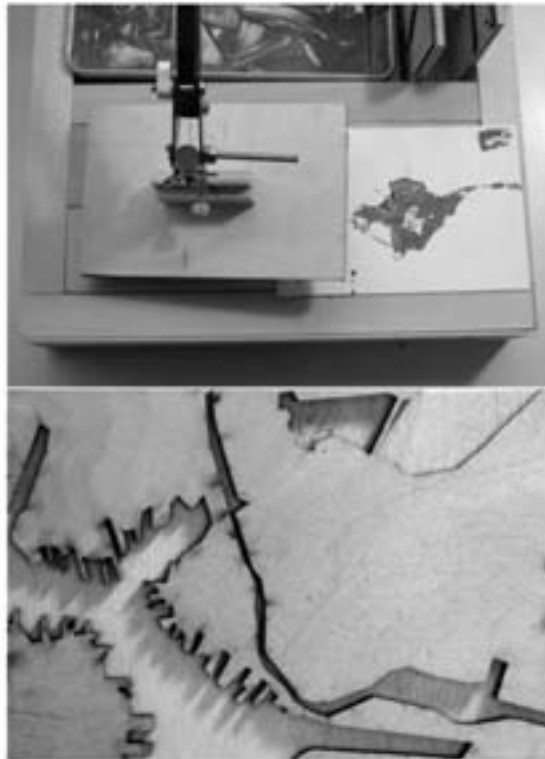
Printing postcards of the shoreline at each intersection of an edge with State Street.



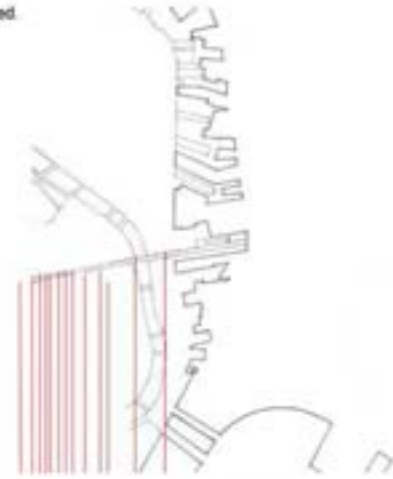
Rather than this _____

the landscape machine produces a cartographer's snapshot of an arbitrary boundary, here between land and water.

The extent of landfill mapped in each case is denoted by the amount of soil printed.



Woodcut block for 2004 print. (The central artery may disappear but the tie-he remains.)



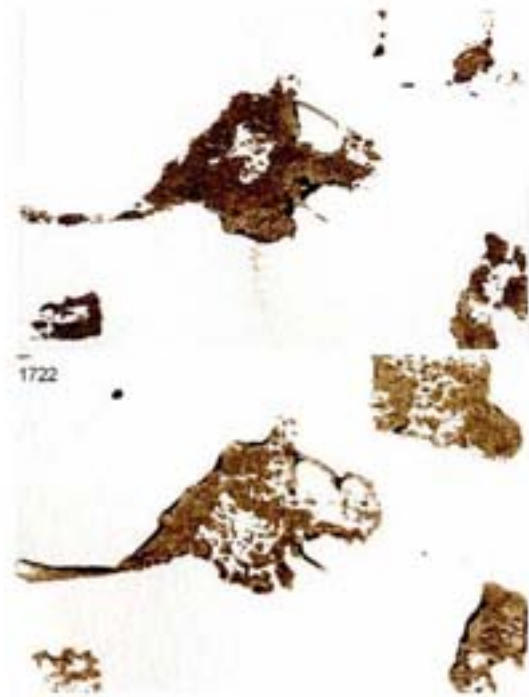
Points at which to make a postcard



The machine could be portable or a series of booths could be installed.



The machine takes an apparently defined edge between land and water and renders it ambiguous.



The souvenir is literally a piece of the city.